

QUOTE

A room without books is like a body without a soul.  
—Cicero.

ONE HUNDRED-ELEVENTH YEAR—No. 43

# The Chelsea Standard

CHELSEA, MICHIGAN, TUESDAY, MARCH 31, 1981

25¢  
per copy

16 Pages This Week Supplement

## Fire Dept. Answers Nine Calls

Chelsea Fire Department made a total of nine runs last week in response to five grass fires, three rescues and one house fire.

On Thursday, March 26 a call was received at 5 a.m. regarding a grass fire at Pierce and Garvey.

At 8:45 a.m. Friday, a rescue request was made from a residence on Heim Rd. near Grass Lake Rd. Then, at 3:04 p.m., Chelsea firemen responded to a grass fire at I-94 and Kalmbach Rd.

A possible house fire on Old US-12 was reported and attended to at 11:45 a.m. Saturday, March 28. Then, at 3:20 p.m. a call was received from the Dexter Fire Department regarding a grass fire on Eastbourne Rd. near Inverness golf course. At 9:24 p.m. a rescue call regarding a possible heart attack was received from an Island Lake Rd. location.

Sunday, March 29 Chelsea firemen answered an 11:52 a.m. call regarding a grass fire on Heim Rd. Then, at 3:52 p.m. a call was received regarding a field fire at N. Fletcher Rd. near the railroad tracks. Finally, at 7:45 p.m. a rescue call was received from a residence on Wilkinson St.



VFW AUXILIARY PRESENTATION: On Saturday, March 28, the Chelsea VFW Auxiliary presented the Chelsea Fire Department rescue squad with a portable suction unit to be used for heart attack and accident victims. Present for the occasion were, front row, left to right, Virginia Schirmacher, safety chairman; Dan Ellenwood, EMT; Bud Hankerd, assistant fire chief; Jim Gaken, fire chief; Alex-

andra Ellenwood, community service chairman; Lucy Platt, VFW Auxiliary president; back row, left to right, Fran Zatorski, senior vice-president; Steve Jaskot, EMT; Bill Geddes, EMT; Matt Hankerd, EMT and Marion Johnson, legislative chairman. EMT Jerry Kenney was not present for photo.

## Beach School Talent Show Slated Tonight

Beach Middle school will present its second annual Talent Fair, Tuesday, March 31. The school's cafeteria filled with student-created displays will be open to the public between the hours of 7 and 8:30 p.m. There will be no admission charge.

Approximately 160 students have submitted entries in a total of 21 sub-categories of art, science, home economics, music, English, social studies and shop. Breakdown by class level shows 32 sixth graders, 87 seventh graders and 43 eighth graders entered in the competition.

Twelve judges have been recruited by the Talent Fair committee made up of James Hoffmeyer, principal Alan Conklin, Lillian Conklin, Tamara Barbert, Richard Bareis, Margaret Koch and Judy Parker, Chelsea teachers. Judges selected by the committee are not members of the Beach school staff and hold positions related to the category in which they are judging.

In the science division, eight entries have been submitted to be

judged by Dale Schumann and Dr. Sheila Stewart. Forty-two items have been entered in the art category. Judges here include Kerry Kargel and Kathy Opoka.

Home ec entries will be judged by Carol Brock and Janice Miller. A total of 26 entries have been submitted in the home ec category. The six shop entries will be judged by John Yelsik.

English and social studies judges will be Jane Schairer, Jan Stevens, Anne Lee and Lee Scharberg. This quartet will carefully judge the 60 entries submitted while June Warren will judge the four entries submitted in the music category.

When careful judging is completed, a first, second and third place ribbon per grade level will be awarded. Creators of those entries deemed "Best of" in each category will be awarded with a \$6 gift certificate donated by local businesses and redeemable at any time. These gift certificates, distributed at random, will be presented to the winners at an awards assembly, Wednesday morning, April 1.

## Terrific Tailors Win Top Honors

On Saturday, March 28 the county-wide 4-H Spring Achievement was held at Saline High school with approximately 400 young people attending from throughout the county, participating in woodworking, leathercraft, demonstrations and personal appearance projects.

The Terrific Tailors of Chelsea had a very exciting day in the Personal Appearance Projects where 17 of the 21 members entered their sewing projects to be judged for construction and modeling. All 17 received A-ratings (blue ribbons) and nine received Honors (purple ribbons) for construction. In the Beginner Division (ages 7-8) A-ratings went to Amy Koenigter and Tracey Roehm with Tracey receiving an Honor rating.

The Young Division (ages 9-12) found A-ratings going to Judy Bareis, Sommer Haven, Laural Inglis, Kathryn Morgan, Sara Noah, Andy Ryan and Amy Wolfgang. Amy Wolfgang received Honors and placed second in the county, receiving the Faber Award for Construction. Sara Noah placed fourth in the county and also received a Faber Award for Construction. Judy Bareis received an Honor Rating in Construction.

In the Junior Division (ages 12-14) Laurie Heller and Wendy Wolfgang both received A-ratings and Honor ratings.

Senior Division (ages 14-18)

## High School Clean-Up Scheduled

Spring is sprung. It is therefore appropriate that all faculty members and students of Chelsea High school will participate in their annual all campus clean-up to rid the grounds of waste paper, broken glass and other refuse that was intended for but never made it to the trash can.

This annual spring cleaning will begin Tuesday morning, March 31, weather permitting, and will continue until the last cigarette butt, the last gum wrapper, the last bottle cap has reached its final resting place inside a two-ply garbage bag.

Inside and out, the faculty and student bodies will rid themselves of unnecessary items crammed in drawers or stuffed inside lockers. From there, hallways and classrooms will receive the once-over as the novice janitorial staff makes its way outside to straighten up the grounds.

Then, after school Friday, April 3, the spring cleaners will be rewarded for their diligent housekeeping. They will depart for a 10 day spring holiday, returning to school Monday, April 13.

## Gaken Retires After 18 Years As Chief of Chelsea Fire Dept.

Jim Gaken announced his retirement from his position as chief of the Chelsea Fire Department in a letter submitted to the Chelsea Village Council Tuesday, March 3. He had held that position since 1963.

Gaken joined the Chelsea Volunteer Fire Department March 31, 1947 as a result of the Central Fire fire. He has served in various capacities since that time.

During his years on the force, he has seen many changes in the department. On May 11, 1948, during Howard Brooks' 50th year as Fire Chief, the department was reorganized. Then, on March 29, 1949 Tom Young was elected chief, a position he held until December 1950, when Ted Balmer was nominated to succeed him. Balmer retained this position for 13 years. Then in March 1963, Jim Gaken took over.

At the March 1949 election, Jim Gaken was elected secretary but on March 20, 1950, that title was expanded to include treasurer. He held that office until March 11, 1957 when he was elected assistant fire chief.

Gaken held his assistant fire chief position until March 14, 1960 when he was named to a three-year position as Accident Fund Trustee. Then, on March 11, 1963, Jim Gaken was elected Chief of the Chelsea Fire Department.

During his 18 years as the head of the department, Jim Gaken was responsible for changing the whistle blowing wards to two blasts for every emergency. He began paying all men that reported to the station with the 35 mile per hour speed limit in 1963. As of Nov. 2, construction of the new fire station was complete and the move was made.

The new, and present, fire station was dedicated Feb. 23, 1964 and thereafter, new firefighting contracts were drawn up with surrounding townships. In May, the new Dodge Power Wagon was delivered.

By January 1965, Gaken was responsible for the acquisition of life and weekly disability insurance for members of the department. In March, the first fire reports were sent to area townships and by June, a generator for the new fire station was purchased from Civil Defense.

The Chelsea Fire Department took over running the Chelsea Community Fair Parade in 1968.

In May 1968 the new Dodge fire truck was delivered and in December, 1,300 feet of hose was purchased for the vehicle.

The Department of Natural Resources supplied a used Jeep in November 1969, for use in grass firefighting.

In May 1970, a whistle control was installed at the fire station and a winch was purchased for the Dodge Power Wagon.

(Continued on page five)



RETIRING FIRE CHIEF JIM GAKEN

## Two Townships Reduce Budgets at Annual Meetings

On Saturday afternoon, six area townships held annual meetings to adopt budgets for 1981 and approve salary increases for some township officials.

In Sylvan township, a new budget of \$214,253 was approved. The former budget totaled \$205,000. All three township officials received salary increases. The supervisor's income increased from \$3,000 to \$4,000 while the salaries of the clerk and treasurer were upped a total of \$1,000 from \$8,000 to \$9,000.

In Dexter township, the supervisor, clerk and treasurer received salary increases. The supervisor was awarded a \$1,500 increase, from \$6,000 to \$7,500 while the salaries of the clerk and treasurer were upped from \$5,000 to \$6,000.

The proposed budget won't be acted upon until Tuesday, April 7 and totals \$223,000, up \$65,000 over last year. New expenditures anticipated in the proposed budget include the establishment of a new card system for assessing property, improving the township hall parking lot and installing a ramp for the handicapped.

The township also allocated \$5,000 more for fire services and \$5,000 in additional funding for road maintenance. It is also planned that \$11,588 in federal revenue sharing funds will be spent for road maintenance.

In Freedom township, there was no action taken on the con-

sidered \$78,750 budget, a figure down by 12 percent over the previous year. A plan to spend \$5,500 in federal revenue sharing funds for road maintenance was approved and no salary increases for township officials were made.

Lyndon township residents adopted a budget of \$95,805 during Saturday's annual township meeting. This was an increase of \$12,805 over last year. The township intends to spend \$6,000 more for fire protection and \$3,300 for road maintenance. The township anticipates \$9,170 in federal revenue sharing funds, \$8,000 of which will be used for road maintenance. No salary increases were made for township officials.

Webster township residents adopted a 1981-82 budget of \$136,248 during their annual meeting. This budget marked a \$4,000 decrease over the 1980-81 budget.

Residents also opted to use all \$11,000 of federal revenue sharing funds for road maintenance and renewed a one-mill tax levy for township operating expenses. Officials of Webster township received no salary increases.

In Lima township, residents approved a \$188,000 budget for the 1981-82 year. Of the total, \$30,000 is designated for repair of the Steinbach Rd. bridge which has been closed for five years. \$20,000 will be used to re-appraise township property.

(Continued on page eight)



FORENSICS TROPHY WINNERS: Following a weekend of public speaking, this quintet returned home from Kalamazoo laden with individual trophies. The group includes, back row, left to right, Kathy Waldyke, Patrick Powers and Holly McCutcheon; front row, left to right, Phil Powers and Dan Klemer.

## Forensics Team Places 2nd in Major Tournament

On Saturday, March 21, the Chelsea High school forensics team traveled to Kalamazoo Central High school to participate in a 27-school forensic invitational tournament. Nearly 800 students,

representing the 27 state Class A, B, C and D high schools, competed in the tournament; 55 CHS students were among the group.

Following the tournament, Chelsea was awarded second

place, the "best we've ever done in a major tournament," according to forensics coach William Collett.

Individual trophy winners included Phil Powers, first in humorous speaking; Kathy Waldyke, second in radio news presentation; Pat Powers and Holly McCutcheon, second in open interpretive duo; and Dan Klemer, third in sophomore impromptu.

## School Board Petitions Due

Persons interested in seeking office on the Chelsea Board of Education are notified that nominating petitions must be filed by 4 p.m. Monday, April 6 at the Administration Building.

Two terms will expire, those of President James Stirling, who

(Continued on page five)

## Chelsea Challenge Run Set for May 9

The second annual Chelsea Challenge will be held Saturday, May 9, beginning at 10 a.m. Sponsored by Modern Mothers Child Study Club, this race was an outstanding success last year. A one mile Fun Run beginning at 9 a.m. has been added to the 5 K (3.1 miles) and 10 K (6.2 miles) races. The course will follow the same route, beginning and ending at Chelsea High school.

Prizes and trophies for the 5 K and 10 K races will be awarded to

male and female winners in all age categories: 0-13, 14-20, 21-29, 30-39, 40-49 and 50 and over. Ribbons will be distributed to winners of the Fun Run. All participants in the 5 K and 10 K races will be eligible for a free complimentary gift drawing following the races. Gifts will be donated by Chelsea merchants. McDonald's of Chelsea will again provide free drinks and ice chips and first aid, half-way aid sta-

(Continued on page eight)







## Natural Foods Sampled By Woman's Club

The Woman's Club of Chelsea met at McKune Memorial Library on Tuesday evening, March 24. The program for the evening was entitled "Foods from Apple Rose," presented by club member Myra Colvin.

Apple Rose is a natural foods store in an old but well-preserved section of Ann Arbor, located on the corner of Liberty and First Sts. The purpose of the store is to sell natural foods grown without the use of chemical pesticides. The basic premise from which the food store operates is that modern man's foods have been preserved and processed to death.

The store was opened in the early 1970's by Professor Gale Jensen, following a debilitating illness. He had two partners associated with the enterprise, Julian and I. W. Moody. Today, Julian Moody manages the store while his father I. W. Moody assists on the business end.

Club members were treated to an interesting and flavorful repast, prepared by Apple Rose caterer Steve Lovely, following the program. Members were served stone ground crackers, Japanese vegetable chips, cashew yeast mold with the flavor of olives, and carob fudge delight, a rich delicious dessert. A mixture of raw nuts, coconut and raisins was also served and members were given copies of the recipes from their natural feast.

Hostesses for the evening were Myra Colvin and Carol Dmoch.

The Comprehensive Employment and Training Act of 1973 (CETA) was signed by the President in 1973, according to a U. S. Department of Labor publication, "Important Events in American Labor History."



**SHORT STORY WINNERS:** Beach 7th grade bloc students recently completed three weeks of short story study. Having read and evaluated many popular shorts, the unit was climaxed with the students writing their own. Following a competition to select the 10 best stories, this group was awarded plaques for their winning efforts.

## Motorcycle Safety Education Course Offered by WCC

Washtenaw Community College will offer a special six-week Saturday morning class, "Motorcycle Safety Education," beginning April 25. The class will meet on Saturdays from 9 a.m. until 4 p.m. and will be held on the Main Campus of the College at 4800 E. Huron River Dr., Ann Arbor.

The fee for the class is \$35. To advance register and to obtain additional information, phone (313) 973-3536. The class will be limited to 24 students.

They include, sitting, left to right, Sue Overdorf, Chris Herter, Kim Collins; standing, left to right, Scott Pryor, Martha Koernke, Heather Grenier, Mari Haapala, Devon Thomas and Paula Colombo. Not present, Chris Tarasow. The 7th grade short story bloc was taught by Mrs. Brown, Mr. Waller and Mrs. Hoeft.



**YOUNG AUTHORS:** Attending the Young Authors Conference sponsored by the Washtenaw Intermediate School District and the Washtenaw Reading Council Saturday, March 21 were Beach students left to right, Sue Overdorf, Casey Mur-

phy, Gary Callison, Mrs. Barbara Brown, Allison Chasteen and Laure Koepele. 100 area students participated in an afternoon of guest speakers and critiques of original manuscripts.

## Beach School Writers Attend Young Authors Conference

On Saturday, March 21, five Beach Middle school students traveled to Ypsilanti West Middle school for a Young Authors Conference. Sponsored by the Washtenaw Intermediate School District and the Washtenaw Reading Council, the conference hosted 100 area youth.

## Hospital Auxiliary 'Salute to Spring' Dance Planned

Chelsea Community Hospital Auxiliary has announced plans for a semi-formal "Salute to Spring" dance to be held Friday, May 1 between the hours of 9 p.m. and 1 a.m. at the Dexter Knights of Columbus Hall, 8265 Dexter-Chelsea Rd.

During the evening, there will be dancing to the music of the Richmond Brown Quintet, under the glitter of a mirrored sphere. Featured guest entertainer will be Fat Bob Taylor, the Singing Plumber. Hors d'oeuvres will be provided throughout the evening and a cash bar will be open.

Tickets for the event are \$18 per couple and are available at Chelsea Drug, Chelsea State Bank, Chelsea Community Hospital, The Dexter Bakery and Brown's Drug Store in Stockbridge.

The proceeds from the dance will assist the Summer Speech Therapy and Disability Program and will help provide a scholarship to an area student pursuing an education in a medically-related field.

## Personal Note

Mr. and Mrs. William Fredericks, who have resided for the past 26 years in the Detroit area, recently moved to Saline Evangelical Home, Room 14A; 440 W. Russell, Saline 48176. Mrs. Fredericks is the former Bertha Merkel of Chelsea.

Please Notify Us of Any Change in Address

## CAROL'S CUTS

40 CHESTNUT  
Monday, Wednesday and Friday  
475-7094  
Apprs. Only  
9:30 a.m. - 3:00 p.m.

## Chelsea Cleaners

Ph. 475-1133

- ★ QUALITY DRY CLEANING
- ★ DRAPERY CLEANING
- ★ SHIRT LAUNDRY SERVICE
- ★ LEATHER & SUEDE SERVICE
- ★ SHOE REPAIR SERVICE

## 3 LOCATIONS:

113 Park St., Chelsea (Main Plant)  
126 E. Main St., Manchester  
400 W. Michigan Ave., Grass Lake

Dry Cleaned Clothes Last Longer

## Make Your Own EASTER BASKET

Easter is right around the corner—Sunday, April 19th. Be prepared! Get your Easter baskets now and fill them with wooden bunnies from Germany, delectable, scrumptious chocolate rabbits and jelly beans from Sanders, or cuddly stuffed animals in all shapes and sizes. We have gifts for everyone: finger puppets, bean bags, buttons and other delightful surprises from Hallmark to fill every Easter basket with excitement.

## Dayspring Gifts

16 S. Main St., Chelsea Ph. 475-7501

## THE LOFT

FRAME & ART GALLERY

107 1/2 S. Main St., Chelsea Ph. 475-2726

LIMITED EDITION PRINTS  
& CUSTOM FRAMING

## OPEN HOUSE

FOR  
EASTER CANDY SUPPLIES

Wednesday, April 1

10 a.m. to 9 p.m.

41 Chestnut Dr., Chelsea

Bulk chocolate (pastels, milk and semi-sweet), molds, sucker sticks, boxes, pastel colors, paint brushes, foils and cellophane bags.



## Potsa Pasta Night

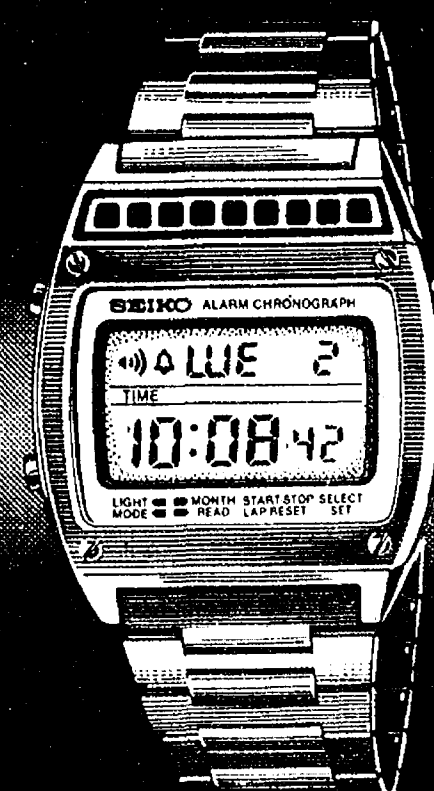
ALL YOU CAN EAT FOR JUST \$2.50  
6 pm to Midnight every Thursday

Music and fun for everyone!

Winston's Pub serves Italian Spaghetti with meat sauce or white clam sauce and garlic bread until you say "Enough Already!" (And there's Poco Loco every Wednesday night!)

WIN  
**Schuler's**  
So many different ways to make you welcome!  
6020 Ann Arbor Rd., Jackson, Mich. 49201

## The new Seiko Quartz Digital Alarm Chronograph.



The list of things it does is even longer than its name.

Its performance is simply superb. From the continuous readout of hours, minutes, seconds, day and date. To more advanced functions. Like a display of the time and the set-alarm time. Hourly time signals. Countdown timer. Chronograph lap capability that records hours, minutes and seconds up to 12 hours. Stainless steel rugged enough to be water-tested to 100 feet. Handsome enough to be a Seiko Quartz.

## Winans Jewelry

You get the best of Seiko only where you see this sign.

SEIKO

Authorized Dealer

Guest speakers included author Loren Estleman, newspaper columnist Jane Myers, sports reporter Tom Hemingway and poet Jane Navarre.

Students each brought an original manuscript which was critiqued and will appear in a soon-to-be published anthology.

Attending from Chelsea were sixth graders Allison Chasteen and Casey Murphy, seventh graders Gary Callison and Sue Overdorf and eighth grader Laure Koepele.

## Modern Mothers Hear Talk on Self Protection

Modern Mothers Child Study Club met March 24 at Beach Middle school. Guest speaker for the evening was Sgt. Ron Ritter from the Washtenaw County Sheriff's Department. Sgt. Ritter gave an excellent program on self protection.

Co-hostesses for the evening were Kathy Peterson and Jan Grenier.

Next meeting will be April 14 at the lower level of the Ann Arbor Trust Co. Chelsea branch.

Subscribe today to The Standard.

Teacher Mrs. Barbara Brown attended the conference with the Chelsea students while teachers Mrs. Janet Rossi, Mrs. Bernice Packard and Ms. Judy Bottom were there as discussion leaders.

## Concert To Benefit Hospice Program

A benefit concert to raise funds for the Hospice of Washtenaw program will be held Friday, May 8 at 8 p.m. in the First United Methodist church sanctuary, 120 S. State St., Ann Arbor. "Michael, McCreesh and Campbell," the official minstrels of the 1980 Lake Placid Winter Olympics, will be presenting American folk music.

Tickets may be obtained from Elizabeth Hammer of Chelsea by calling 475-1828 or from Shelley Lane of Dexter, 428-3253.

Hospice is a network of people and services specifically organized to assist a person facing terminal illness. Its aim is to offer help and comfort to both patients and family during a difficult time.

Telephone your club news to 426-3877

## THE ANN ARBOR FIGURE SKATING CLUB

## MELODY ON ICE

APRIL 3 & 4 7:30 p.m.  
APRIL 5 2:30 p.m.

## VETERAN'S ARENA

Jackson Road at Maple, Ann Arbor

- DAVID SANTEE - 2nd in World Championships, 1981
- CAROL FOX AND RICHARD DALLEY - World Class Ice Dancers, 1981
- THE HOCKETTES - Ann Arbor's own award-winning precision skating team
- Members of the Ann Arbor Figure Skating Club

Advance Tickets \$2.00

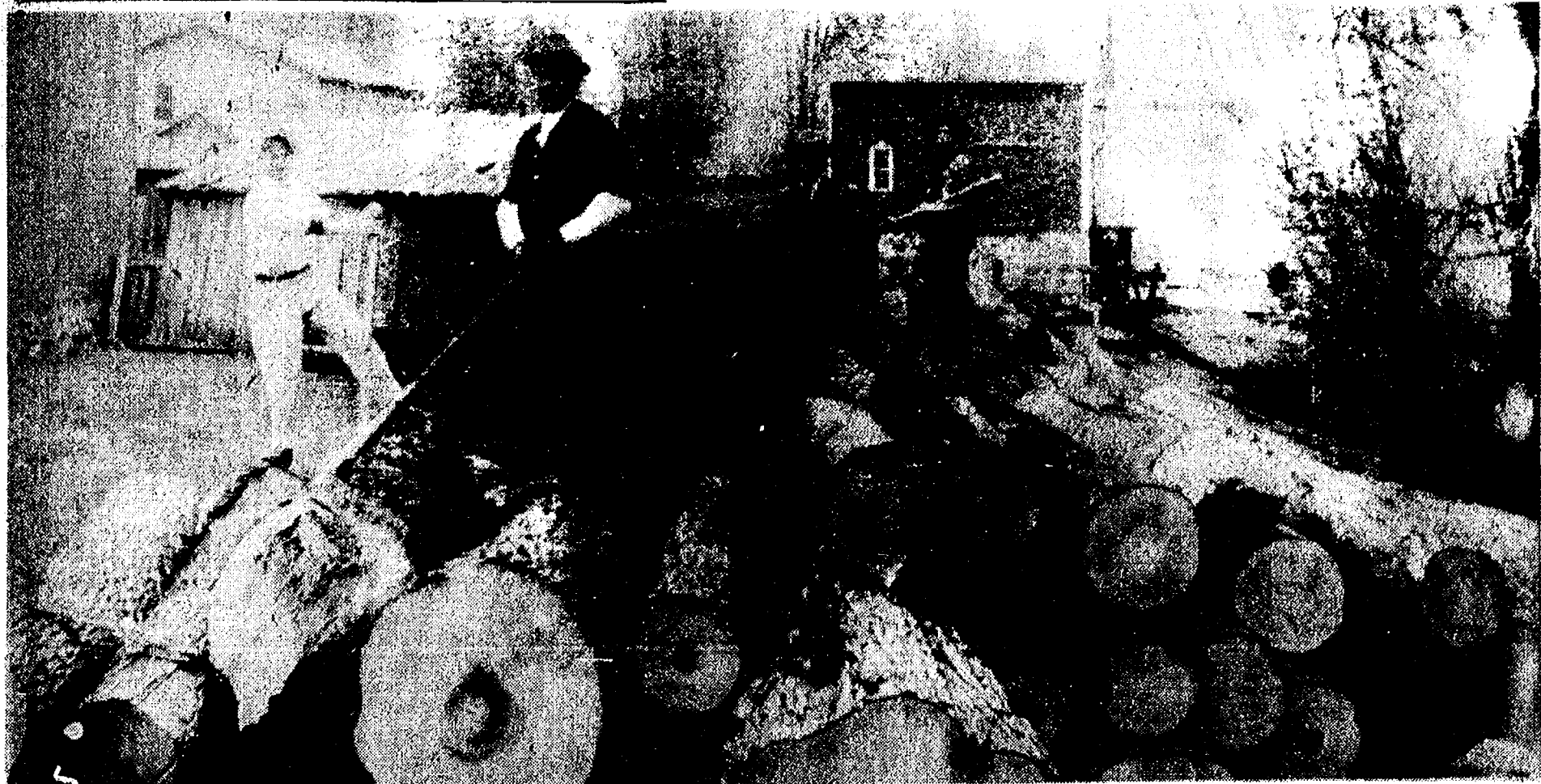
Available at Hudson's, Sien & Co's, Goodyear's, Crown House of Gifts, Roadway Party Store, Happy House Gifts, Big 10 Party Store

Tickets at the Door \$2.50

Group rates available  
Call 665-7806 or 453-5234







TURN OF THE CENTURY MILLERS: Mill Creek Research Council has attempted to document South Lima's worthiness for recognition in the National Register of Historic Places and, in doing so, has documented the history of milling in the Mill Creek area on the west side of S. Fletcher Rd. The mill pictured had been the major business in the area for approximately 100 years, begun as late as 1831 by millwright John K. Bingham who "built mills across southern Michigan."

## Jerusalem Mills History Dates to Early Days of Lima Township

The mill buildings which stood along the north side of Mill Creek on the west side of S. Fletcher Rd., can now be seen only in pictures. The site is within the proposed South Lima Historic District. However, the home that the Warren Hoovers bought in 1968 at the southeast corner of S. Fletcher and Haist Rds., was long used as the mill owner's home.

For approximately 100 years this mill was the major business at Jerusalem. These corners were known as Bingham's, Porter's and Porterville, by some as Mill Dell, finally about 1860 as Jerusalem, after a town back home in New York founded by the Universal Friend, Jemima Wilkinson. There was never a post office, and the roads are still graveled.

It was as late as May 2, 1831 that John K. Bingham, a

millwright who "built mills across southern Michigan," bought one half of Section 29 in Town 2 South, Range 4 East, Lima, from the government. This did not give him exactly what he needed for what he had in mind. Later he picked up 10 acres up Mill Creek from Lemuel Scott, flood plain, and 12 acres down creek, extending to what is now Fletcher, from Deacon G. Willets. Next he built two dams which made a large pond and a much smaller one to handle the water. He in 1832 had a mill raising, following which William Campbell froze on his way back to David Cook's. Bingham's business was mill building; he sold in July 1834 all his Lima lands to Noah Porter and went west into Calhoun county.

In November 1836 Porter separated off the three mill parcels, these he sold to Thomas

and John Litchfield, newly of Hartford and Winsted, Conn. They soon sold to James Litchfield and Theodore Pond also of Hartford, next of Lima. James Litchfield, a cabinet maker, also had a shop nearby the mill. He remained in the Lima-Dexter area for many years, turning out much furniture from his Dexter shop as late as 1870. Porter joined relatives at Madison, near Adrian, where he was again in the saw mill business.

Back in the late 1830's and 1840's there was much work for saw mills. The names of all these involved and the extent of business activities has not been learned; however, old newspapers, land records, and conversations with others provide some clues. Lyman Williams advertised as agent for Porter's Mills for a mill hand in May 1835.

This same Lyman Williams on May 9, 1839 dissolved partnership with Ezekiel Thurston on a job with the Central Railroad. That same May day Horace Hawley Comstock forfeited his contract with the Central Railroad. Both John K. Bingham and Comstock were involved with several members of the Ketchum family, some of whom owned local property. H. H. Comstock, whose wife was a niece of James Fenimore Cooper, took up more land in Lima than anyone else, 400 acres in Sections 17 and 18. Some lands he had in Lima into the 1840's; however, Comstock settled in Kalamazoo county in 1831 and was a major investor there. Obviously there was some involvement with Porter's Mills but what?

The mill is said to have sawed timbers to be used for the new railway that did not reach Dexter from the east until July 1841. The Denison Jenks family had sold timber rights for the railway. They eventually used unused timber to build a new home along the new section line road, now Sager Rd. The original log house was back along Mill Creek. The 1841 house was replaced by the present house on the Helen Valant farm in 1861. At that time there was much use for sawed timbers.

Something else was doing in Lima in 1841, new roads were being built on the section lines. In some places planking was needed. Darius Pierce, long-time town clerk, was awarded the contract

to build the new roads in the northwestern sections of the town. He got his planking at Davidson's saw mill in Sylvan. The mills of Abram Arnold and William A. L. Shaw at Lima Center probably had their share of work too. Some years the mills shut down in the summer time. However, the Jerusalem mill was busy all summer long following the June 6, 1917 tornado which swept from Sharon to Delhi and beyond.

For the 12 years from 1841 until December 1853 Chauncey and then Henry Barnard, Hartford, Conn. farmers owned the Porter mill, always listed as non-residents. Why? How did they manage? Possibly they came west to supervise during the heavy winter seasons. Serving them as local agents, names now available, were John Mitchell, Horace Gage by trade a miller, James Litchfield, and possibly Levi Rogers. Gage died while managing the mill.

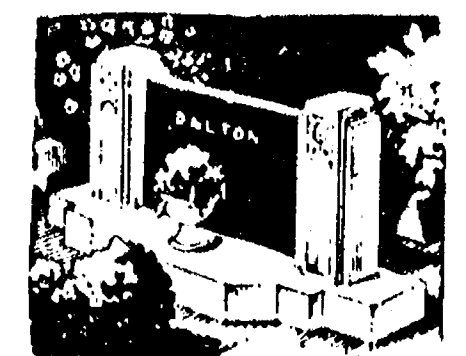
The Barnards sold in December 1853 to William Hanke, a German immigrant of Freedom township. Hanke kept the mill properties only until November 1854 when he sold to Henry R. W. Nordman whose family had pioneered on what later became the Dettling centennial farm. For many years Hanke had a grist mill at River Raisin in Bridgewater township.

Lima millwright Palmer Westfall bought from Nordman in 1869 before Nordmans went to Missouri for 10 years. Westfall almost immediately transferred ownership to his wife. He bought for \$1,000 and they sold in July 1871 for \$5,000. Did he during this time build a grist mill? There is some question as to just when a grist mill was added. Later there was a cider mill as well. This cider mill was operated until a fairly recent time. The year-around grist mill season encouraged other businesses such as saloons and country stores to open. The first storekeeper was possibly Fred Horne who opened a store on the northeast corner in about 1859. Manny Wacker, a former mill owner, ran a store and gas station into the 1950's.

John George Moeckel of the Waterloo, Mich. milling family, bought from Westfall. In February 1878 Moeckels sold to a John Neumann of Detroit, possibly Moeckel got it back as in January 1890 the mill properties passed on mortgage default from Moeckel to a Fredericka Seybold. Her estate passed title on to Catherine Zahn who in September 1891 sold to Judson Merchant. Doubtless the mills continued to operate during these years.

Merchant sold to a miller from Bay City, Frank Meinhold. He tragically died on Sunday, Nov. 27, 1904, when he went into the mill alone to do some repair work. His was the "second" such death at that mill.

Meinhold's sons, Charles and



MAUSOLEUMS ★ MONUMENTS  
BRONZE TABLETS ★ MARKERS

**BECKER MEMORIALS**  
6033 Jackson Road  
ANN ARBOR, MICHIGAN

## Fair Board Notes

The regular Fair Board meeting was called to order Thursday, March 26 by President Jerry Heydlauff. Other officers present were M. Guenther, Fair Board secretary, K. Poljan, treasurer, L. Grau, Fair manager. Other directors were F. Renton, A. Bradbury, R. Bollinger, J. Dault, H. Gross, R. Heller, J. Herrick, J. Holefka, C. Koenn, J. Layher, R. Lesser, Jr., J. Merkel III, M. Stapish, B. Stotfer and H. Trinkle.

Max, ran the mill. Following the death of their mother, they sold in November 1911 to Emmanuel Wacker, a native of Freedom, and went to Montana. During the Meinhold ownership the Harmon Holmes family of the Chelsea Milling Co. held a \$500 mortgage on the Jerusalem mill.

Manny Wacker was the last saw and grist mill operator. With him worked Christian Koch, a brother-in-law, who worked as a carpenter in the summers. Late in 1930 the state bought the water rights, paid Wacker to close his business, took out the dams and the ponds were drained. This opened up some very fertile 1,000 acres up-creek in Sharon and Freedom to cultivation. The cider mill was operated off an electric motor. Clarence "Cap" Trinkle who had a cider mill at his farmstead on Scio Church Rd., the present Bristle mill, bought the old Jerusalem mill and tore down the remaining buildings. Thus ended millwright John K. Bingham's major project in Washtenaw county.

Much historic research and recording of present day Lima is being done through the Mill Creek Research Council's efforts to document South Lima's worthiness for inclusion in the National Register of Historic Places. This is the first such application to be processed by the Michigan History Division of the Secretary of State's office. The Research Council is the local agent handling the paperwork and will receive an allocation for a portion of the costs. This will be explained further, at the 16th annual meeting, by Virginia Denham, a charter Research Council Board member.

Special guest is hoped to be "Red" Cosgrove, Huron Clinton Metropolitan Authority delegate from Washtenaw county who will be able to discuss HCMA's involvement in county recreation. The meeting is March 31 at 8 p.m. at the Lima Town Hall. The public is invited.

present. Pat Merkel displayed logos for probable use by the Fair. They were to be judged this week. President Heydlauff called the meeting to order. The secretary's and treasurer's reports were read and accepted. Tractor pulls timing and elimination were discussed in detail. Other superintendents' suggestions were asked for and discussed.

### COLUMN 9 BOOKKEEPING SERVICE

Individual Tax Preparation  
Personalized Bookkeeping  
for Small Businesses

DAYS ..... 668-0101  
NIGHTS ..... 426-4917

### CUSTOM BUMPING and PAINTING

FREE ESTIMATES - ALL MAKES

Get the Best for Less!

**FRANK GROHS CHEVROLET**  
Phone 426-4677 Dexter, Mich.

## Views On Dental Health

By ROBERT A. BURNS, JR., DDS, P.C.

### IF TOOTH KNOCKED OUT BY INJURY

Tommy was riding his skateboard down the driveway. He lost his balance and fell to the pavement. He wiped the blood from his mouth and found his upper front tooth in his hand. What do you do? Luckily, your dentist can deal effectively with this kind of dental emergency. But he'll need your help.

wires or acrylic or both. The wires are generally left in place 6 to 8 weeks and with a little luck, the tooth may last a life time.

The younger the patient, the better the chances of success. Long-lasting results have been disappointing in replanting teeth in adults.

If you have dental health questions you would like to see answered, please mail them to the address below.

Collect the tooth and wrap it in a wet cloth, or place it in a glass of salted water. Bring the child immediately to your dentist's office. Don't waste time because the chances for a successful replantation are best if done within 30 minutes to an hour after the mishap.

If the root has not been damaged, the dentist will attempt to re-implant it and stabilize it, generally with

A public service with the aim of promoting a better dental health environment. From the office of: ROBERT A. BURNS, JR., D.D.S., P.C., Chelsea Professional Building, 1200 S. Main St., Chelsea, Phone: 475-9124.

### CANDY CLASSES

**EASTER CANDY**  
Wednesday, April 8  
7 to 9 p.m.  
**\$6.00**

### BOXED CANDY

**Thursday, April 9**  
7 to 9 p.m.  
**\$6.00**

**SIGN UP AT VILLAGE BAKERY, CHELSEA**  
**The Sugar Shack, Chelsea**

### Curling Post

## EASTER SPECIAL

April 1 - April 30

**CUSTOMIZED PERMS \$28**

**HAIR CUT FREE!**

**\$38 VALUE**

**LONG HAIR SLIGHTLY HIGHER**

**HAIR CUTS Regular \$10 NOW ONLY \$8**

**Prices Valid Only with Featured Operators:**  
**Nancy, Cathy or Sherry**

**PHONE 475-2848 FOR APPT.**

WITH THIS AD - OFFER EXPIRES 3-30-81

## WE NEED USED TRACTORS

Now is the time to upgrade your power unit

**LET'S TRADE!**

**TRACTORS LAWNMOWERS**

Check Our Cash, No-Trade Deals

CHELSEA'S FULL SERVICE DEALER

# CHELSEA HARDWARE

When you want dependability, look for...

## Simplicity

110 S. Main Chelsea Ph. 475-1121

AN ALLIS-CHALMERS COMPANY

# BANANAS: WITH THE WORKS.

**Dairy Queen**

## 99¢

**THE DQ BANANA SUPREME™**

OK banana lovers, feast on this Cool, creamy DAIRY QUEEN® soft serve, thick hot fudge, luscious whipped topping piled high, a sprinkling of nuts, and a cherry. All surrounded by a beautiful, fresh banana. We think it's one of the tastiest ways to treat a banana ever. And there's just one way to see if you agree. At your DAIRY QUEEN® store. Come give it a test. **WE TREAT YOU RIGHT™**

**Thurs. & Fri. April 2-3**

© AM D.Q. Corp. / 1981

**CHELSEA DAIRY QUEEN - BRAZIER**  
901 S. Main St., Chelsea Ph. 475-2677







1981		March							1981		
S	M	T	W	T	F	S					
1	2	3	4	5	6	7					
8	9	10	11	12	13	14					
15	16	17	18	19	20	21					
22	23	24	25	26	27	28					
29	30	31									

COMMUNITY  
CALENDAR

# COMMUNITY CALENDAR

**Monday—**  
Chelsea Kiwanis Club meets every Monday, 6:30 p.m. at Chelsea Community Hospital.

Chelsea Lioness, second Monday of each month at the Meeting Room in the Ann Arbor Trust Co. on M-52, Chelsea, at 7:30 p.m. Call 428-7179 or 475-9455 for information.

Lima Township Board regular meeting first Monday of each month, 8 p.m., Lima Township Hall.

St. Mary's Altar Society, first Monday of each month, 7:30 p.m., at Rectory basement.

**Tuesday—**  
Lima Township Planning Commission, third Tuesday of each month, 8 p.m., Lima Township Hall.

Lyndon Township Board regular meeting, third Tuesday of each month, 7 p.m., in Lyndon Town Hall.

Chelsea Village Council meets the first and third Tuesdays of each month.

Inverness Country Club pot-luck and euchre party, 6:30 p.m., first Tuesday of each month.

Lions Club, first and third Tuesday of every month, 6:45 p.m., at Chelsea Community Hospital.

Chelsea Community Hospital Nutrition Program pre-natal nutrition classes, fourth Tuesday of each month, 6 to 7 p.m. at the hospital. To register, phone 475-1311 (ext. 354). Class is free of charge.

Sylvan Township Board regular meetings, first Tuesday of each month, 7 p.m., Sylvan Township Hall, 112 W. Middle St.

Rebekah Lodge No. 130 meets the first and third Tuesday of each month, 7:30 p.m.

Chelsea Child Study Club second and fourth Tuesday of each month, 8 p.m.

Chelsea Jaycees, first Tuesday of each month. For more information call, 475-7285.

Chelsea Refunders, Tuesday, April 14, 7 p.m., at 13340 Harper Dr., Chelsea. New members welcome, bring coupons and refunding forms to trade. For more information call 475-8451.

Mill Creek Research Council annual meeting, Tuesday, March 31, 8 p.m., at Lima Town Hall. Public invited.

Woman's Club of Chelsea, Tuesday, April 14 at McKune Memorial Library. Program: "Five Decades of Wedding Gowns" presented by club member Betty Osterle. Roll call: "Sharing your wedding pictures." Hostesses: Mary Jane Leeman and Mary Turcott.

Stated Convocation, Olive Chapter No. 140, RAM, Tuesday, April 2, 7:30 p.m.

Regular meeting of Olive Lodge 156, F&AM, 7:30 p.m. Tuesday, April 7. Pot Luck dinner, 6:30 p.m.

**Wednesday—**  
Recreation Council meets first Wednesday of each month at 7:30 p.m. in the village council room above the police offices. Open to the public.

Chelsea Communications Club meets fourth Wednesday of each month, 8 p.m., Chelsea Lanes basement meeting room.

**Thursday—**  
North Lake United Methodist Church Community Men's Group, second Thursday of every month at 7:30 p.m. in the activities building.

Chelsea Band and Orchestra Boosters, second Thursday of each month, 7:30 p.m., high school band room.

Meetings of the Lyndon Township Planning commission are held at 8 p.m. the second Thursday of every month at Lyndon Town Hall.

Knights of Columbus Women's Auxiliary, second Thursday of each month, 8 p.m. at K. of C. Hall, 20750 Old US-12.

Limears, at the home of Mrs. Douglas Kennedy on Thursday, April 2. Pot-luck dinner at 12:30 p.m.

CATS meeting Thursday, April 2, 7:30 p.m., Sylvan Township Hall.

Herbert J. McKune Post 31, American Legion, Thursday, April 2, 8 p.m. at the Post Home on Ridge Rd. Executive board meeting at 7:30 p.m.

Chelsea Community Farm Bureau, Thursday, April 9, 7:15 p.m., at home of Mrs. Ella Heller, 2965 Chelsea-Manchester Rd. Pot-luck, bring own table service.

**Friday—**  
Senior Citizens meet third Friday of every month, pot-luck dinner, games and cards. 6 p.m. at Senior Citizen Activities Center on W. Middle St.

K. of C. Fish Fry dinners, St. Mary School, Chelsea, Fridays, 5:30 to 8 p.m., April 3, 10. Adults \$3.50, children \$2.50.

Rogers Corners Farm Bureau group, Friday, April 10, 8:30 p.m. at the home of Edwin Horning, 14680 Waldo Rd.

Annual meeting of the Unadilla Baseline Cemetery at the Lloyd May residence, Friday, April 10, 7:30 p.m.

105th annual Men's Egg supper Friday, April 10, 5:30 to 7:30. Variety of food. Public invited. North Lake United Methodist church, 1411 North Territorial Rd. Adults, \$3.25, children under 12, \$1.75.

**Saturday—**  
Community Father and Son Banquet, Waterloo Town Hall, Saturday, April 11, 6:30 p.m. Free-will offering.

Stockbridge American Legion Dance, Saturday, April 4, 9 p.m.-1 a.m. Music by the Playboys.

Boy Scout Troop 476 will have a paper pick-up on Saturday, April 4. If you wish your papers picked up call the following numbers: 475-2650, 475-1412 or 428-8413.

**Misc. Notices—**  
Home Meals Service, Chelsea. Meals served daily to elderly or disabled. Cost per meal, \$2.25 for those able to pay. Interested parties, call Barbara Branch, 475-7644 or Ann Feeney, 475-1493.

American Legion Post 31 presents "A Journey Into Space," April 4 and 5.

North Lake Co-Op Nursery school is now taking enrollments for the 1981-82 year for 3- and 4-year old sessions. Anyone interested should call Jan Knott, 475-2455.

Lamaze childbirth preparation classes are offered continually at Chelsea Community Hospital. To register, call 475-9558 or 475-7484.

Chelsea Co-op Nursery is now accepting applications for fall, 1981. Please call Denise Martell, 475-1966, or Georgette Hansen, 475-2245.

## Terrific Tailors Win Top Honors

(Continued from page one)  
found A-ratings going to Mary Anderson, Diane Bareis, Linda Bristle, Beth Heller, Nancy Heller and Laura Hines. Honor ratings went to Mary Anderson, Linda Bristle and Laura Hines, Mary Anderson received the Top or first place Faber Construction Award in the county.

Following the Construction came the Modeling awards with Amy Wolfgang receiving the Top Young Model Award. The following persons placed in the Top 30 Modeling: Judy Bareis, Sommer Haven, Laural Inglis, Sara Noah and Mindy Ryan. Laurie Heller placed in the Top 10 Junior Division Models. In the Senior Division, Linda Bristle took second place in the county and Mary Anderson, Daine Bareis, Nancy Heller and Laurie Hines were in the Top 10 in the Senior Division. Along with very proud parents, the leaders, Mrs. Albert Anderson, Mrs. Robert Heller and Mrs. Arthur Hughes were very pleased with the outstanding accomplishments of these fine young people.

## Bike Licensing May Help Prevent Springtime Theft

With spring in the air, crocus in full bloom, sunny days and mild temperatures, the typical rash of seasonal bike thefts is also beginning. A few tips to protecting your bicycle include locking it up and having it registered with the Chelsea Police Department. For 50-cents, a bicycle license may be purchased at the police department. It will serve as means of identifying owners of recovered bikes. And isn't that less bother and expense than having to get another bike?



BEGINNER AND YOUNG MISS participants in the 1981 Spring-Achievement activities held at Saline High school Saturday, March 28 included 21 girls from the Chelsea Freer Acres 4-H Club. Beginners and Young Miss sewing entries and models were, front row, left to right, Anna Flintoft, Deanna Collins, Trisha Matloff, Charna Street;



FREER ACRES JUNIOR AND SENIOR MISS participants at the 1981 Spring Achievement day held Saturday at Saline High school, included, left to right, leader Gloria Greenleaf, Sue Young, Sandy Young, Crystal Porath, Julie Thompson, and Amy Eisenbeiser. Not present for photo, Connie Bollinger and Bethel Snyder.

## Diabetic Diet Classes Offered

Chelsea Community Hospital is offering a series of three diabetic diet classes beginning the week of April 5. Topics covered during the three weeks include the treatment of diabetes, the new diabetic exchange system, eating out on a diabetic diet, and preparing delicious meals for the diabetic.

The course will be taught by Pat Parr, registered nurse, and Julie Say, registered dietitian. These classes are for the diagnosed diabetic. A family member is welcome to come with you. A registration fee of \$10 is charged to cover costs of the three classes. The classes will be held at 3 p.m. at the United Methodist church in Chelsea. To register for the classes, phone the Chelsea Community Education Department (313) 475-9830.

Please Notify Us of Any Change in Address

## Freer Acres 4-H Club Girls All Earn A-Ratings at Show

During Saturday's county-wide 4-H Club Achievement Day held at Saline High school, nearly 400 county youth participated in leathercraft, woodworking and demonstrations and personal appearance projects. Freer Acres 4-H Club, under the leadership of Gloria Greenleaf, had a total of 21 participants who entered sewing projects to be judged for modeling and construction. All 21 received A-ratings (blue ribbons) for construction.

In the Beginner Division (ages 7-8), Anna Flintoft received the Honor award (purple ribbon) for her entry. Young Miss Division (ages 9-12) Honor award recipients were Tylene Greenleaf, Julie Thompson, Crystal Porath and Melanie Flanigan. Sue Young, a member of the Junior

Miss Division (ages 12-14), received a purple Honor award in construction for her entry as well. Of 150 young ladies competing, Tylene Greenleaf was awarded county-wide top honors in the Young Miss Division, receiving the Faber Award for Construction. Following the Construction competition, Modeling honors were awarded to the Top 30 Models. Of these, Tylene Greenleaf, Melanie Flanigan and Melanie Dils were given recognition. Tylene Greenleaf was also

given Top 10 honors for her modeling. In the Junior Miss Division, Sue Young was awarded Top 10 modeling honors. In 1934, the first National Labor Legislation Conference was called by the Secretary of Labor to obtain closer federal-state cooperation in working out a sound national labor legislation program. Annual conferences were held until 1955, according to a U. S. Department of Labor publication, "Important Events in American Labor History."

## STRECKER & CAREY, P.C.

Certified Public Accountants

Services Provided in Following Areas:

- ★ AUDITING
- ★ INCOME TAX PREPARATION & CONSULTATION
- ★ ESTATES & TRUSTS
- ★ COMPILATIONS & REVIEWS
- ★ ACCOUNTING SERVICES
- ★ MANAGEMENT ADVISORY SERVICES

HOURS: 9 to 5 Monday thru Friday Evening and Saturday appointments available.

8124 MAIN ST. DEXTER  
PHONE 426-2522

SAVE

### HILLTOP PLUMBING & HEATING

8316 Werkner Rd. - Ph. 475-2949 - Chelsea, Mich. 48118

Open Mon. thru Fri., 8 a.m. to 5 p.m. Sat., 8 a.m. to 12 noon

## \$5.00 COUPON

This Coupon good on any service, remodeling or new work done between April 1 to May 30, 1981 for all cash or net 10-day customers.

Also, good for purchases at our counter for sales over \$50.

OFFER EXPIRES MAY 30, 1981. LIMIT 1 COUPON PER HOUSEHOLD

SAVE

COUPON

## McCalla Feed Service

Ph. 475-8153

12875 Old US-12 Chelsea

### IDEAL LIVESTOCK EQUIPMENT

HEATERS FOR WATER TANKS

HAY and STRAW

CRACKED CORN - BIRD FEED

WOOD SHAVINGS

WAYNE DOG & CAT FOOD

DOG BISCUITS

SALT OF ALL KINDS

Complete Line of WAYNE FEEDS



### Two Escapees From Cassidy Lake Nabbed By Police

Chelsea Police and Washtenaw County Sheriff's Department combined efforts Thursday evening, March 26 to apprehend a pair of Cassidy Lake Technical School walkaways.

Escapees Michael Lewis and George Smith had, according to police sources, been transferred from the state prison at Ionia the same day they walked away from the minimal security facility in Chelsea.

Chelsea Police were notified of the escapees traveling in a westerly direction at 8:50 p.m. Thursday. They were spotted at the corner of Main and Dewey Sts. at 9:32 p.m. The county was notified and dispatched a car.

In the meantime, Police Chief Aello and his auxiliary police were holding a class session in the Village office building when they became aware of the incident. The auxiliary forces got some on the job training as they tracked the escapees to a pond near I-94. The pair were pulled from the icy waters and returned to the school.

In 1936, in the first large "sit-down" strike, the United Rubber Workers (CIO) won recognition at Goodyear Tire & Rubber Co., according to the Labor Department's publication, "Important Events in American Labor History."

### K. of C. Hosts St. Louis Boys At Fish Fry

Nearly 60 boys from the St. Louis School were dinner guests of the Chelsea Knights of Columbus at their fish fry Friday, March 27. Jerry Hammer-schmidt, council Grand Knight greeted the boys, accompanied to the event by Fr. Salvatore, Fr. Louis, Brother Dean and a number of nuns from the school.

The fish fry will continue on Friday evenings for the next two weeks. The meal includes battered cod filets, french fries, cole slaw and rolls. Serving begins at 5:30 p.m. and continues until 8 p.m. at St. Mary's school on Congdon St.

Homemade desserts, prepared each week by members of the Women's Auxillary are also sold.

### Pick-Up Truck Stolen from Parking Lot

Between the hours of 8 p.m. Tuesday, March 24 and 1:30 a.m. Wednesday, March 25, a 1979 3/4 ton Chevrolet pick-up truck was stolen from the Chelsea Lanes parking lot.

Owned by a Manchester man who had gone bowling, the silver vehicle with white spoke wheels was reported missing to Chelsea Police following an evening of bowling. There are no suspects.



**FISH & FRENCH FRYERS:** Jerry Hammer-schmidt, Maynard Poertner, Jim Coffman and Bill Harvey stir, crisp and serve in the kitchen of St. Mary's school on Congdon St. As part of a series of fish fries sponsored by the Chelsea Knights of Columbus, the Friday feasts lure hoards of fish lovers to the school. The special meals will continue for two more weeks.



**DISHING IT OUT** and serving it up is Emma Niebauer of the Chelsea Knights of Columbus Auxillary. She and other K. of C. wives have spent long hours working busily toward the success of the month-long Friday night fish fries held at St. Mary's school.

## 14th District Court Proceedings

**Week of March 23-27**  
Judge Kenneth Bronson, presiding  
Patricia K. Rogers pled guilty to two counts of dog at large. Sentenced to \$50 fines and costs or five days Washtenaw County Humane Society, each charge.

Robert Andrzejewski was sentenced for removal of Christmas trees to \$175 each in restitution to complainant(s) and \$350 each in costs and three days Sunday jail work program.

Jack A. Kingsbury was sentenced for impaired driving to \$300 fines and costs and attendance at the Alcohol Education Program and Human Behavior Classes.

Patricia Reynolds was sentenced on two counts of two non-sufficient funds checks to \$150 fines and costs, six months probation, continued attendance at the Washtenaw County Council on Alcohol and no drinking.

John C. Iamfle pled guilty to driving with license suspended. Sentenced to \$50 fines and costs and three days probation work program.

Steven Williamson was sentenced for failing to stop at the

scene of a property damage accident to \$150 fines and costs and three days probation work program.

Kim M. Risner pled guilty to reckless driving. Sentenced to \$155 fines and costs and attendance at the Defensive Driving School plus restitution as determined by the court or 10 days.

### Land Use Conference Slated at Saline High

The second annual Washtenaw County Agricultural Land Conference has been scheduled.

The opportunity to practice decision making is a rare one when it involves land use decisions. One such opportunity will occur on April 4 at Saline High school from 11:30 a.m. to 4:30 p.m.

Because of the format of this conference, attendance is limited and pre-registration is required. Please send \$4 to the Washtenaw Co-operative Extension Service, 4133 Washtenaw Ave., P. O. Box 8645, Ann Arbor 48107, to cover the cost of lunch and registration.

### American Legion Post 31

presents

## JOURNEY INTO SPACE

SATURDAY, APRIL 4

2 and 6 p.m.

SUNDAY, APRIL 5

3 p.m.

From the Wright Brothers to the Appollo 16 mission.

Shows at the

### LEGION HOME

1700 Ridge Rd.

ADMISSION: \$1.00

### REFRESHMENTS

Tickets from any Legionnaire or at Strieter's Men's Wear or Chelsea Lumber.

### DEXTER HIGH SCHOOL GLASS OF 1976 5-Year Reunion

JULY 25, 1981

If you have not received a letter, call:

Leisa Ledwidge

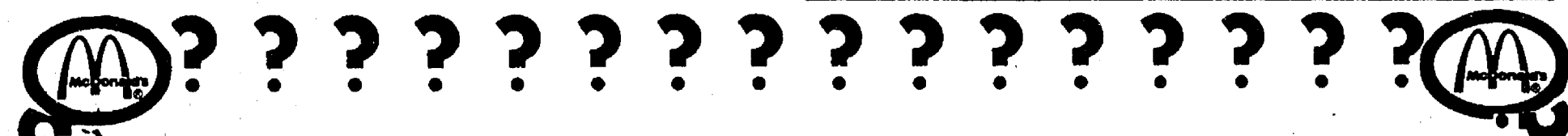
426-8279 evenings

or

Ricki Jo Easterling

426-8358 evenings.

### Subscribe to The Chelsea Standard

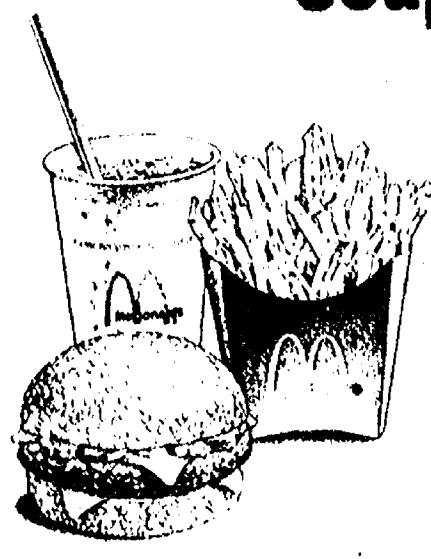


## Confused By So Many Coupons?

# CHELSEA McDONALD'S STOPS THE CONFUSION!



We, at Chelsea McDonald's accept ALL competitors' coupons for comparable product items.



\$1 PANCAKE DINNERS Every Tuesday Night in March



1535 S. MAIN ST. PH. 475-9620

## April Fool the Economy

AT

# LITTLE ROOSTER RESTAURANT

FOR ONE NIGHT ONLY WEDNESDAY, APRIL 1

4 p.m. to 11:30 p.m.

### COLD TAP BEER

\$1.50

25¢

A PITCHER

A GLASS

With the Purchase of Dinner or Pizza

# LITTLE ROOSTER

RESTAURANT & LOUNGE

11485 N. Territorial Rd. (Corner Dexter Town Center)

OPEN Tues., Wed., Thurs., 4 to 11:30 Fri., Sat., 4-2 Sun., 2-10

CARRY-OUTS 426-8668 PIZZA - FRIED CHICKEN

LIVE MUSIC Fri. & Sat. Wild Fire





**FUNK AND WAGNALLS HERE WE COME:** Winners of the South school spelling bee held last week were in the 4th grade, runner-up Shannon Fredette, left, and winner Callisa Tucker. Callisa successfully

## FFA Chapter Members Attend State Convention

Members of the Chelsea FFA Chapter traveled to East Lansing March 25-27 as the Michigan Association of FFA celebrated its 53rd annual state convention during Farmers Week at Michigan State University. During the three-day convention, FFA members from across the state gathered to conduct business and to recognize fellow members for their outstanding achievements. Several special activities were planned for this year's 53rd convention. Theme for the celebration was "FFA—Building Tomorrow's Today." Featured speakers included Charley Willey, nationally known speaker, Kevin Drane of Purdue University and national FFA vice-president, Susie Barrett. Incentive awards were presented to more than 600 outstanding FFA members and chapters by the state FFA and the National FFA Foundation. Several adults were also cited for service to FFA.

State president Kim Decker of Remus and other state officers presided over convention sessions. Two official delegates from each of the 153 chapters in the state represented the membership in voting on all key issues of business. Representing Chelsea were Kelly O'Neill, Mike Bross and Shawn Ball.

Other highlights included the naming of the Star State Farmer and Star Agribusinessman and the election of state officers for 1981-82. Contestants who had previously won honors in local, district and regional competition were state finalists in seven leadership contests. Awards were presented for community development, agricultural proficiency, outstanding scholarship and chapter membership contests. Displays of agricultural and career exhibits were also featured.

Vocational Agricultural teacher Keith Gafner is the Chelsea FFA Chapter advisor.

## Panel Discussion Set on Rural Crime

Michigan State Police will sponsor a panel discussion and slide presentation on rural crime prevention, Thursday, April 2 at 7:30 p.m. in the Manchester Middle-school gymnasium, 410 City Rd., Manchester.

Topics to be covered include machinery theft, livestock rustling, grain larceny and fuel theft and area rural and urban dwellers will be offered a variety of information regarding the prevention of these sorts of crime.

"The main purpose for this program," according to Lt. John Kopacz of the Michigan State Police, Jackson, "is to give property owners information regarding their legal rights and responsibilities."

The panel discussion format will encourage audience queries directed toward panel members, Judge Kenneth Bronson, Prosecutor William Delhey, Conservation officer Craig Wales, Michigan Farm Bureau Lansing

representative Robert Gaskill, State Representative Mary Keith Ballantine and State Police trooper Kopacz. Though the program is primarily directed toward rural crime prevention, it will not be limited to rural crime.

According to Lt. Kopacz, the program will offer "common sense approaches" by denying the potential criminal the opportunity to commit a crime. "Though there are always potential victims and desires to commit crimes, if the opportunity to do so is denied, less crime results," explained Lt. Kopacz.

Area residents are encouraged to attend this important informational meeting, discussion and program. For further information, contact Lt. John Kopacz at the State Police Post, Jackson, at (517) 782-8722.

Telephone your club news to 475-1371

spelled "furniture." In the 5th grade, "flagrant" was the deciding word, correctly spelled by Sam Eisenbeiser, center right, while Carmen Albertson, right, was runner-up.

## Lima Township Budget Raised

(Continued from page one)

A total of \$3,900 will be used to renovate the township hall while \$3,755 will be used for the construction of a ramp for the handicapped.

The supervisor's salary was raised from \$555 to \$3,755 for serving as assessor while the clerk received a pay hike of \$1,300. She will receive \$6,200 as opposed to

last year's \$4,900. Attending residents also approved federal revenue sharing funds totaling \$6,800 to be used for road maintenance.

**Please Notify Us In Advance of Any Change in Address**

## Births

A daughter, Emily Elizabeth, Tuesday, March 17, St. Joseph Mercy Hospital, Ann Arbor, to Mike and Katie Hammett, 20641 Wildflower Ridge, Chelsea. Maternal grandparents are Mr. and Mrs. R. J. Walsh of Livonia. Paternal grandparents are Mr. and Mrs. Victor Hammett of Westland.

A daughter, Amy Cecile, Monday, March 16, University Hospital, Ann Arbor, to Kenneth and Susan McCalla. Maternal grandparents are Cecil and Nellie Cobb of Chelsea. Paternal grandparents are Ralph and Elaine McCalla, also of Chelsea. Amy has a brother, Eric, three-years-old.

A daughter, Cindy Marie, Saturday, March 7 to Glenn and Rose Seleska, II of Dexter Township Rd., Dexter. Maternal grandparents are George and Gertrude Miller of Dexter Township Rd., Dexter. Paternal grandparents are Glenn and Ida Seleska, also of Dexter Township Rd. Paternal great-grandmother is Mrs. A. A. Bell of Ypsilanti.

A daughter, Ingrid Sarah, Monday, March 16, St. Joseph Mercy Hospital, Ann Arbor to Ron and Laura Biedron, 13333 McKinley Rd. Maternal grandparents are Ray and Ruth Schieb of Ann Arbor. Paternal grandmother is Bernice Biedron of Dearborn.

A daughter, Megan Catherine Renee, Wednesday, March 18, St. Joseph Mercy Hospital, Ann Arbor to William Scott and Virginia L. Morgan, 580 W. Middle St.

## Chelsea Challenge Run

(Continued from page one) tions and restrooms will be available.

Early registrants will be a \$7 fee. To qualify, entries must be postmarked no later than Friday, May 1. An \$8 fee can be paid the day of the run. A T-shirt is included in the registration fee. The Fun Run will carry a fee of \$1 and does not include a T-shirt. Registration begins at 8 a.m. for the Fun Run and continues until 9:30 a.m. for the other races.

Special discount rates are available for sponsored student groups of 10 or more.

Proceeds from the 1981 Chelsea Challenge will be donated to the Waterloo Natural History Association. For further race information, call Sue Yager at 426-8077 or Liz Prentiss at 475-8191.

The Brotherhood of Railroad Trainmen was organized in 1883, according to a publication of U.S. Department of Labor.

## Thank You . . .

Hilltop wishes to express their many thanks to their valued customers, and say that anyone worried in regards to warranty work — don't —. I will handle all warranties — just call me at 475-2573.

We've made many friends in the 28 years that we have been in this community and, true, a few enemies. But on the whole it has been a real pleasure working with you all.

We would also like to take this time to welcome Steve and Jillyn Pangborn and family to this community as the new proprietors of Hilltop Plumbing & Heating as of April 1st, 1981. We know they will continue to give you the same high-quality and speedy service that we have always tried to give our customers in the past.

We hope that you too, will welcome them as you have us in the 28 years we have serviced this community.

Again, Thank You.

## HILLTOP, INC.

Robert Shears and Staff

# IN A CLASS BY ITSELF

## PREMIER CHECKING

### The Checking Account That Earns Interest

You may think that interest bearing checking accounts are all the same, but look a little closer. Ann Arbor Trust's Premier Checking is in a class by itself. We pay 5 1/4% interest — the highest rate allowed by law for banks and savings and loans — and we compound continuously on the daily collected balance for an effective annual yield of 5.467%. But, the big difference in Premier Checking is that we offer you the high quality service that you expect and deserve: an atmosphere of friendliness, where banking is a pleasure, not a chore; personal customer contact, where your individual needs are met; and prompt courteous attention where we'll serve you faster.

Our goal is to provide you with the best in banking services, and Premier Checking is one way we're doing just that. Ask about Premier Checking today.



## ANN ARBOR TRUST

THE BANK OF TRUST  
CHELSEA BANKING OFFICE • 475-9154  
1478 Chelsea-Manchester Road • Member FDIC

## H&R BLOCK TAX TEST

Question No. 18

**H&R Block will accompany you to an IRS audit.**

☐ True ☐ False

It's TRUE. When H&R Block prepares your return, it's someone who knows all about income taxes and has carefully reviewed your return prior to the audit interview. It's someone who will go with you at no additional cost, not as a legal representative, but to answer all questions about how your taxes were prepared.

WE'LL MAKE THE TAX LAWS WORK FOR YOU

## H&R BLOCK

THE INCOME TAX PEOPLE

105 S. Main

Open Monday through Saturday 9-6 Phone 475-2752  
OPEN TODAY — APPOINTMENTS AVAILABLE



# Wally Wood Is Retiring From Insurance Business

Wallace (Wally) Wood, a State Farm Insurance Independent agent in Chelsea for 33 years will turn over his business to 42-year-old Jerry Ashby Wednesday, April 1.

Wally Wood came to Chelsea in 1925; he graduated from Chelsea High school in 1934 and in 1939 married his wife, Anne, from Jackson. They have been married for 41 years.

He had been involved in part-time insurance sales for many years while he held other positions. He had farmed with his father, had been employed by Sohio, had worked as an electrician, had worked at Chelsea Spring and Rockwell Standard. In 1951, Wally Wood concentrated on full-time insurance sales.

He is a former Kiwanis Club president and has been a member of that organization for 25 years with 20 years perfect attendance. He is a past president of the Chelsea Fair Association and a former treasurer of the Village of

Chelsea, a position he held for 19 years. He served as branch manager of the Chelsea Secretary of State office for 17 years.

In 1969, Wally Wood earned his CLU (Charter Life Underwriter) title, an accomplishment shared by only 15 percent of his Washtenaw County cohorts. The CLU involves five years of study, research and competitive examinations. Of 52 State Farm agents to complete degree requirements, 51 were present at the graduation ceremonies held in Washington, D. C., one of whom traveled from Hawaii to receive his title. According to Wood, this large group attending the graduation ceremonies is an indicator of the closeness and dedication of State Farm agents, which total 15,000 nationwide.

About nine months ago, Wally Wood decided to sell his agency back to State Farm, which later located Ashby. "The time was right," explained Wood. "I'm in

good health and I'd like to take it easy, travel and just relax. I also have stamp and matchbook collections to keep me busy," he continued. Wally and Anne Wood intend to remain in their Chelsea home, one which they built on Flanders St. in 1956.

Retiring with Wood is his secretary of 22 years, Dorothy Fowler who plans to travel to Alaska with her husband, Jack. But, to keep the transition smooth, another secretary, Jenny Johnson, will remain at the Chelsea State Farm office.

Since the notification of his retirement, Wally Wood has sent letters to each of his clients to introduce them to their new State Farm agent. "The response has been positive," Wood said, "people have stopped me on the street to congratulate me and I know the change of ownership will be smooth."

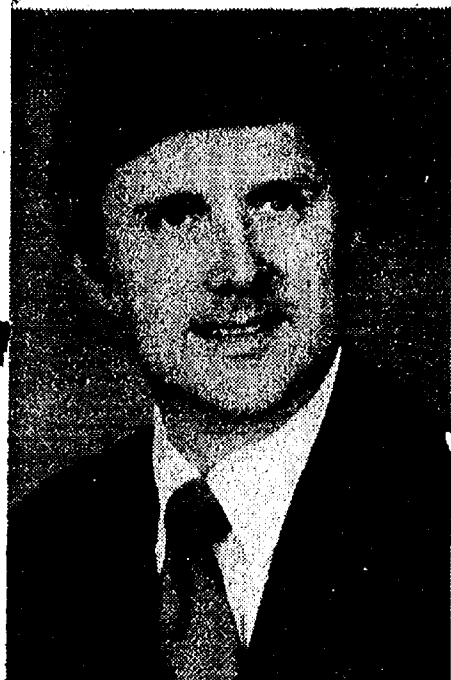
Jerry Ashby has been a State Farm agent for 19 years, serving as an Ann Arbor agent for nine years and then taking his business out west for another 10 years. He decided to come back to Ann Arbor and was anxious to move to the Chelsea area.

"I like the small town atmosphere, I feel like I can become a part of the community," explained Ashby, a single man with five children and one grandchild. Since his decision to relocate in Chelsea, Ashby has purchased a home on Cavanaugh Lake.

Jerry Ashby is a past president and past zone lieutenant governor of the Ann Arbor Breakfast Optimist Club. He is also a former member of the Board of Directors of the University of Michigan Club.

Ashby has been in and around the Chelsea State Farm agency for a number of weeks, getting organized in his new endeavor and becoming acquainted with the town and its people. "I'm anxious to get to know the people of Chelsea," Ashby said.

He has recently taken a three-week insurance course at Michigan State University to become re-licensed as a Michigan insurance agent. He will assume his duties as the current State Farm insurance independent agent Wednesday morning.



JERRY ASHBY



WALLACE WOOD

## "SPRING HAS SPRUNG"

and it's time to plant TREES & SHRUBS from McClear's. We have more selection and better facilities to serve you this year - at the reasonable prices that brought you in last year.

"Come to Your Neighborly Nursery"

**MCCLEAR'S  
EVERGREEN NURSERY**

11362 TRIST RD., GRASS LAKE

(517) 522-5177

Open Tues.-Sun., 9-6. Closed Mon.

1-94  
1-94

# The Chelsea Standard

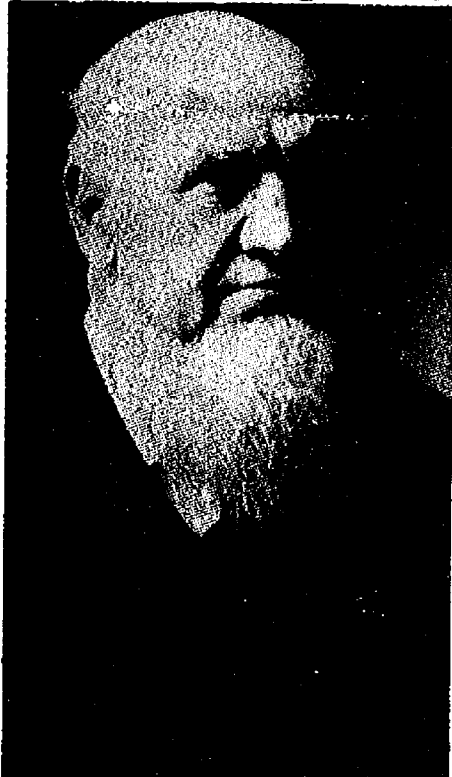
Section 2

Chelsea, Michigan, Tuesday, March 31, 1981

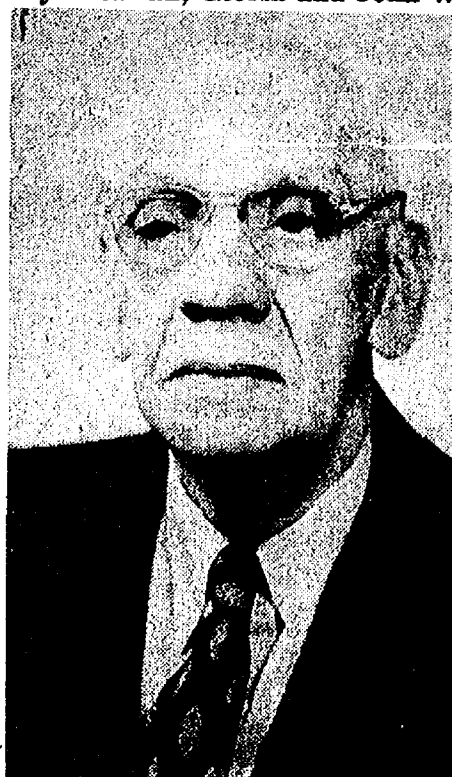
Pages 9-16



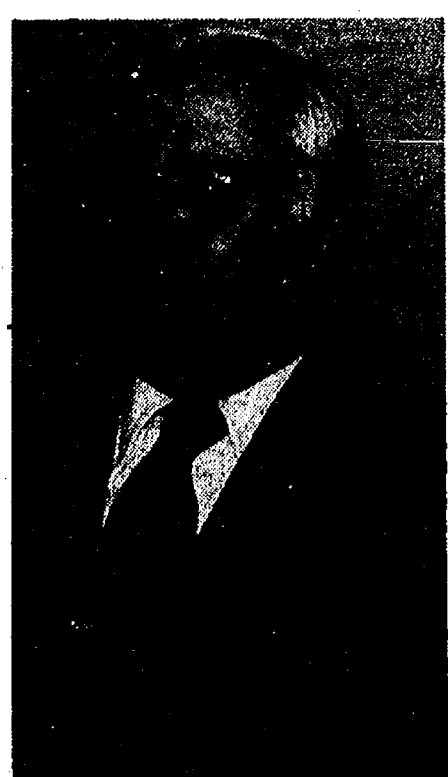
**STAFFAN RECEPTION:** Sunday afternoon, an open house was held at the Staffan Funeral Home to introduce new owners, John and Gloria Mitchell, to the Chelsea community. Posing for the photo are present owners George L. and Kathryn Staffan, Gloria and John W. Mitchell, and Pam and George A. Staffan, son of the present owners. Wednesday, April 1 will mark the end of four generations of ownership of the Staffan Funeral Home as the Mitchells assume responsibilities.



Frank Staffan, founder, and grandfather of George L. Staffan



George P. Staffan, father of the present owner



George L. Staffan, owner



George A. Staffan, son of the present owner

## Staffan Funeral Home Will Change Owners Tomorrow

Following three generations of service to the Chelsea community, ownership of the Staffan Funeral Home will change hands Wednesday, April 1 as John W. Mitchell of Rochester becomes the new owner.

Staffan Funeral Home has a fascinating history. Established in 1853, it is the second oldest funeral business in the State of Michigan; the oldest family-run funeral home. Only Muehligh Chapel in Ann Arbor is older, having been established in 1852.

Staffan Funeral Home had the first limousine hearse in Washtenaw county and offered the first air conditioned ambulance service in the area until discontinuation in 1957 which was, according to George L. Staffan, "one of the best things that ever happened." Ambulance service, a public service, meant being on call day and night and week-ends were particularly hectic.

Frank Staffan, the originator of the Staffan Funeral Home and grandfather to the present owner, was born in Alsace-Lorraine Feb. 2, 1832. He came to Chelsea as a carpenter contractor and began making wooden caskets at age 20. But, as a contractor, he was also

responsible for the construction of many buildings that lined Park and Main Sts. He built the old Catholic church, a portion of the old school house, residences and the still standing North Lake church.

At the time of his death on May 18, 1915, Frank Staffan had held a number of public offices including president of the Board of Education.

George P. Staffan, began the second generation of the family funeral business. He also dabbled in politics and became president of the Village of Chelsea at age 21. He was, and still remains, the youngest village president in Chelsea history. As president, he was responsible for the pavement of Chelsea's roads; the original pavement still covers the streets though inches of asphalt bury it.

In his lifetime, George P. Staffan was an innovator in the funeral business. He was in the forefront of arterial embalming, a process still used today and he made and sold embalming fluid. He died in 1950 and his son, George L. Staffan, the present owner, took over at age 39.

This third generation Staffan had assisted in his father's business prior to his real assumption

of duties and ownership. He, too, had served on the Village Council though he had no real political aspirations. Nevertheless, George L. Staffan was responsible for the change from diagonal parking to parallel parking on Main St.

The Staffan Funeral Home has always been a leader in its field but, upon the present owner's 70th birthday last month, he made the decision to sell. His son, George A. Staffan, has chosen not to continue the business. He operates a highly successful building and real estate firm on Mackinac Island.

But with John W. Mitchell's purchase, it is specified in the contract that, until George L. Staffan's death, the name of the funeral home will not be changed. "I always said that there would be a Staffan Funeral Home in Chelsea even if I had to dig ditches to keep it that way," explained Staffan.

George L. Staffan and his wife, the former Kathryn A. Hindelang, will remain in their home above the funeral home until Sept. 1. In the meantime, they will prepare one of their homes in town for residence. The couple intends to remain in Chelsea.

## Trapping your money in a high interest earning 30-Month Money Market Certificate is one way to increase your investment dollar over a short period of time.

### \$500 MINIMUM DEPOSIT

Our 30-Month Money Market Certificates require a minimum deposit of just \$500, making this savings program within the reach of every saver.

The rate of earning in-

terest for 30-Month Money Market Certificates changes every two weeks, but the rate of interest posted when you purchase your Certificate is guaranteed for the full 2½ year life of the Certificate.

Investing in 30-Month Money Market Certificates is an excellent way to increase your dollar savings...and you receive insured protection on all your funds on deposit to \$100,000 by the F.D.I.C.

**CSB CHELSEA STATE BANK**

Member F.D.I.C.

305 South Main / 475-1355

**Current 30-Month CD rate is 11.75%!**

By law, a substantial interest penalty is charged for the early withdrawal of time funds.

Catherine McAuley Health Center presents

**ST. JOE'S RADIO-THON AUCTION**

### MERCHANTS:

The Volunteers are coming. Won't you please help by donating merchandise to be auctioned on the air?

Proceeds from this year's Radio-Thon will establish a Community Hypertension Screening Program.

Thank you,

Ben Koerber Jim Weldon  
Auction Co-chairmen

**MAY 8, 9, & 10**

**WAAM RADIO 1600**



# SPORTS



**SPRING TRAINING:** Warm temperatures sent the 1981 Chelsea High school varsity baseball team into the field last week to brush up on their technique. This quartet includes, background to foreground,

John Welton, Gary Van Meer, Steve Grau and Mike Wade. Opening day for the Bulldog sluggers, Tuesday, March 31.

## Varsity/JV Baseball Schedule

March 31—Brighton	A	4:00
April 14—Pinckney	H	4:00
April 16—South Lyon	H	4:00
April 20—Saline	A	4:30
April 22—Tecumseh	H	4:30
April 24—Dexter	A	4:30
April 27—Milan	H	4:30
April 29—Fowlerville	A	5:00

## Boys Track Schedule

April 14—Manchester	H	4:30
April 18—Saline	A	4:30
April 20—JV Western	A	4:30
April 21—Napoleon	A	4:30
April 23—Tecumseh	H	4:30
April 28—Dexter	A	4:30
April 30—Milan	H	4:30

## BIDDY BASKETBALL ROUND-UP:

# Special Events Day Closes Season for Young Cagers

### Warriors Win NBA

The NBA biddy basketball season came to an end last Saturday with no undefeated teams. The league-leading Warriors lost their bid for an unblemished record by losing the final game of the season.

### Trailblazers 32, Warriors 28

After trailing at the half by two points, the 'Blazers outscored the Warriors by three points in each of the last two periods to record a come from behind victory. Todd Starkey scored 11 of his game high 17 points in the second half while Mark Bentley was contributing six. The 'Blazer defense was spearheaded by the spirited play of Mike Popovich, Kirk Lawton, Brian Coy, Lee Redding and Marcus Fletcher.

For the Warriors, Mark Bareils and Greg Haist led the scoring attack with eight points while Steve Petty chipped in with six. Scott Frisinger turned in another strong rebounding performance

and Mike Feeney, Doug Graves, Doug Andress and Jeff Stacey played excellent defense.

### Nets 44, Jazz 31

Jon Lane once again performed offensive miracles for the Nets, scoring 20 points. Biff Buntin and Matt Steinhauer provided scoring support by popping in 14 and 7 points, respectively. Randy Hafner and Robby McDowell played outstanding defense in limiting the Jazz to 31 points.

The Jazz were led in scoring by Kevin Maynard with 17 points, Matt Bohlender with 10 and Jeff Harvey and Ron Johnson with two each.

Doug Williams, Robert Vctor and Jay Marentay were the team leaders on defense.

### NBA FINAL STANDINGS

	W	L
Warriors	5	1
Trailblazers	3	3
Nets	3	3
Jazz	1	5

### Suns Take ABA Title

ABA players wrapped up their season by competing in the annual special events day. Over 80 boys and girls competed for first, second and third place awards in each of five events.

Winners in dribbling were Larry Nix, first; Greg Boughton, second; and John Collins, third.

In free throw shooting, Craig Spencer took first while Craig Maynard was second and Greg Boughton, third.

As hot shot, Jr. Morseau finished first while Craig Maynard was second and Greg Boughton, third.

Lay-ups found Tim Anderson in first place while Greg Boughton took second and John Collins third.

Rated first in passing was Matt Monroe while Greg Boughton and Tim Anderson tied for second place.

For the regular season, the Suns, coached by Larry Nix were the league champions with a 5-0 record. The final regular season standings are as follows:

### ABA FINAL STANDINGS

	W	L
Suns	5	0
Lakers	4	1
Celtics	4	1
Pacers	3	2
Rockets	2	3
Spurs	1	4
Bullets	1	4
Supersonics	0	5

### Kings Are WBA Champs

The WBA season came to an end as well last Saturday with the 60-plus boys and girls taking part in the special events day. Each player competed in five categories and, at the conclusion of the competition, the following players were honored.

In dribbling, Chad Starkey took first, Robbi Stoffer second and Kyle Plank, third.

Kyle Plank was first in lay-up ability while Chad Starkey was second and Jude Quilter third.

Tom Steele took first place in passing while Robert Northrup was second and Rex Nye, Jude Quilter and Chad Starkey tied for third place.

First place in the hot shot category was Chad Starkey while Kyle Plank was second and John Flannery third.

From the free throw line, Jude Quilter took first, Chad Starkey second and Eric Hammer third.

The regular season ended with the Kings, coached by Tom Steele winning the league title with a perfect 5-0 record.

### WBA FINAL STANDINGS

	W	L
Kings	5	0
Knicks	4	1
76'ers	3	2
Bucks	2	3
Nuggets	1	4
Pistons	0	5

## Mens Recreation Basketball Teams In Tourney Play

The first round of the 1981 mens recreational basketball tournament got underway Sunday, March 29.

In the first game, Ann Arbor Centerless won by forfeit to Thompson's Pizza. Ann Arbor Centerless will meet Dana Corp. in the semi-finals, winning by forfeit over Banner Spring and Four Slide in the second game.

Chelsea Woodshed defeated Chelsea State Bank in the third game to assure their spot in the semi-finals. Chelsea Woodshed will play Rocking-M-Ranch in the second game to be held at 2:30 p.m. Sunday, April 5. The two winners of the semi-finals will battle it out for the championship at 4 p.m. Sunday.

Telephone your club news to 475-1371

# BOWLING

## Senior House League

Standings as of March 23

	W	L
Thompson's Pizza	50	34
Freeman Machine	50	34
IPSCO	50	34
Steele's Heating	48	36
K. of C. Wading	48	36
T. C. Wading	48	36
McCalla Feeds	44	40
Bollinger Sanitation	44	40
Bauer Builders	43	41
Walton Barber	43	41
Chelsea Lumber	41	43
Kilbreath's Trucking	40	44
DeHaboro	39	45
Frank Grohs Chevrolet	36	48
Washenaw Engineering	37	47
Gambles	35	49
VFW No. 4078	34	50
Parts Peddler	24	60

600 series: M. Poertner, 639.  
525 and over series: J. Harook, 560; R. Kiel, 580; N. Fahrner, 572; C. Figg, 528; B. Taylor, 561; C. Coltre, 538; B. Sifton, 562; W. Moss, 535; J. Velsik, 522; W. Westphal, 534; D. Alexander, 590; F. White, 584; R. Freysinger, 593; B. Clouse, 553; K. Platt, 526; J. Stoffer, 537; D. Clark, 544.

210 and over series: J. Harook, 210; M. Poertner, 283; N. Fahrner, 210; D. Alexander, 229; E. Keizer, 224; R. Freysinger, 223.

## The Woodstock Gang

Standings as of March 28

The Little Rascals	32 1/2	27 1/2
The Sweethearts	49	32
The No Names	35	46
The Strikers	25 1/2	55 1/2
Games over 50: E. Greenleaf, 81, 82; C. D. White, 84, 113; E. Beeman, 59, 103; D. Clark, 82; S. Guenther, 82, 84; C. Thurkow, 88, 66; R. Shures, 73; R. Bergman, 58; T. Zink, 80, 94; T. Hamel, 95, 69; J. Vorus, 76, 64; C. White, 52, 62.		
Series over 100: E. Greenleaf, 104; C. D. White, 197; E. Beeman, 162; D. Clark, 109; S. Guenther, 166; C. Thurkow, 133; P. Shures, 122; T. Zink, 174; T. Hamel, 155; J. Vorus, 140; C. White, 114.		

## Tri-City Mixed League

Standings as of March 27

	W	L
Fitzsimmons Excavating	134	78
Rod's Roofing	133	77
Chelsea Big Boy	129	81
Williams & Lisnyal	127	83
Inverness Inn	120	90
J & M Oil	118 1/2	92 1/2
Back Door Party Store	110 1/2	99 1/2
Larry's Towing	109	101
Seitz's Tavern	108	102
Culligan Water Conditioner	106	104
Gelman Sciences	106	104
Wolverine Bar	99	111
High Hopes	89	121
Cryer, Smith & Wallaker	88	122
Schanz & Fletcher	86	124
Ann Arbor Pipe & Supply	82	128
Howard & Sheppard	75	135
Take Overs	64	146

Women, games 60 and over: L. Sheppard, 169; M. Westcott, 160; J. Burnett, 180; M. Spaulding, 209, 187; J. Schulze, 180; L. Wade, 172; M. Gipson, 170, 179; J. Hafner, 183, 205; P. Harook, 169; S. Williams, 179; T. Williams, 169; G. Workman, 180; B. Pike, 170; K. Fletcher, 184, 186, 177.

Men, games 200 and over: J. Spaulding, 200; H. Thurkow, 211; J. Harook, 204, 210; G. Biggs, 228; R. Williams, 212.

Women, series of 475 and over: M. Spaulding, 510; M. Gipson, 502; J. Hafner, 536; G. Workman, 490; K. Fletcher, 547.

Men, series of 525 and over: G. Burnett, 560; H. Thurkow, 526; V. Hafner, 533; J. Harook, 577; G. Biggs, 548; R. Williams, 542.

Men, series of 525 and over: G. Burnett, 560; H. Thurkow, 526; V. Hafner, 533; J. Harook, 577; G. Biggs, 548; R. Williams, 542.

Men, series of 525 and over: G. Burnett, 560; H. Thurkow, 526; V. Hafner, 533; J. Harook, 577; G. Biggs, 548; R. Williams, 542.

Men, series of 525 and over: G. Burnett, 560; H. Thurkow, 526; V. Hafner, 533; J. Harook, 577; G. Biggs, 548; R. Williams, 542.

Men, series of 525 and over: G. Burnett, 560; H. Thurkow, 526; V. Hafner, 533; J. Harook, 577; G. Biggs, 548; R. Williams, 542.

Men, series of 525 and over: G. Burnett, 560; H. Thurkow, 526; V. Hafner, 533; J. Harook, 577; G. Biggs, 548; R. Williams, 542.

Men, series of 525 and over: G. Burnett, 560; H. Thurkow, 526; V. Hafner, 533; J. Harook, 577; G. Biggs, 548; R. Williams, 542.

Men, series of 525 and over: G. Burnett, 560; H. Thurkow, 526; V. Hafner, 533; J. Harook, 577; G. Biggs, 548; R. Williams, 542.

Men, series of 525 and over: G. Burnett, 560; H. Thurkow, 526; V. Hafner, 533; J. Harook, 577; G. Biggs, 548; R. Williams, 542.

Men, series of 525 and over: G. Burnett, 560; H. Thurkow, 526; V. Hafner, 533; J. Harook, 577; G. Biggs, 548; R. Williams, 542.

Men, series of 525 and over: G. Burnett, 560; H. Thurkow, 526; V. Hafner, 533; J. Harook, 577; G. Biggs, 548; R. Williams, 542.

Men, series of 525 and over: G. Burnett, 560; H. Thurkow, 526; V. Hafner, 533; J. Harook, 577; G. Biggs, 548; R. Williams, 542.

Men, series of 525 and over: G. Burnett, 560; H. Thurkow, 526; V. Hafner, 533; J. Harook, 577; G. Biggs, 548; R. Williams, 542.

Men, series of 525 and over: G. Burnett, 560; H. Thurkow, 526; V. Hafner, 533; J. Harook, 577; G. Biggs, 548; R. Williams, 542.

Men, series of 525 and over: G. Burnett, 560; H. Thurkow, 526; V. Hafner, 533; J. Harook, 577; G. Biggs, 548; R. Williams, 542.

Men, series of 525 and over: G. Burnett, 560; H. Thurkow, 526; V. Hafner, 533; J. Harook, 577; G. Biggs, 548; R. Williams, 542.

Men, series of 525 and over: G. Burnett, 560; H. Thurkow, 526; V. Hafner, 533; J. Harook, 577; G. Biggs, 548; R. Williams, 542.

Men, series of 525 and over: G. Burnett, 560; H. Thurkow, 526; V. Hafner, 533; J. Harook, 577; G. Biggs, 548; R. Williams, 542.

Men, series of 525 and over: G. Burnett, 560; H. Thurkow, 526; V. Hafner, 533; J. Harook, 577; G. Biggs, 548; R. Williams, 542.

Men, series of 525 and over: G. Burnett, 560; H. Thurkow, 526; V. Hafner, 533; J. Harook, 577; G. Biggs, 548; R. Williams, 542.

Men, series of 525 and over: G. Burnett, 560; H. Thurkow, 526; V. Hafner, 533; J. Harook, 577; G. Biggs, 548; R. Williams, 542.

Men, series of 525 and over: G. Burnett, 560; H. Thurkow, 526; V. Hafner, 533; J. Harook, 577; G. Biggs, 548; R. Williams, 542.

Men, series of 525 and over: G. Burnett, 560; H. Thurkow, 526; V. Hafner, 533; J. Harook, 577; G. Biggs, 548; R. Williams, 542.

Men, series of 525 and over: G. Burnett, 560; H. Thurkow, 526; V. Hafner, 533; J. Harook, 577; G. Biggs, 548; R. Williams, 542.

## Rolling Pin League

Standings as of March 24

	W	L
Coffee Cups	77 1/2	42 1/2
Tea Cups	74	46
Beaters	69	51
Grinders	68	52
Sugar Bowls	68	52
Silverware	68	52
Kitchen Kapers	64	56
Pots	63	57
Mixers	60 1/2	59 1/2
Kookie Cutters	60	60
Troopers	59 1/2	60 1/2
Brooms	57 1/2	62 1/2
Jellyrollers	53	67
Blenders	51 1/2	68 1/2
Jolly Mops	50 1/2	69 1/2
Happy Cookers	46 1/2	73 1/2
Cook Books	46 1/2	73 1/2
Sweet Rolls	41	79

500 series and over: P. Wurster, 518; E. Whitaker, 561; C. Bradbury, 523; P. Poertner, 556; J. Edick, 514; D. Judson, 528; J. Lonskey, 508.

400 series and over: J. Yeakey, 445; N. Hohn, 492; B. Roberts, 471; S. Rings, 483; C. Clark, 459; G. Williams, 488; H. Ringe, 400; E. Heller, 468; B. Selwa, 484; A. Classon, 470; R. Forner, 483; P. Zangara, 410; E. Unterbrink, 485; L. Stuewe, 464; S. Ritz, 453; G. Feldman, 472; C. Kiewasser, 450; C. Furtney, 482; D. Verwey, 481; E. Williams, 411; H. Smith, 495; P. Smith, 495; J. Smith, 470; C. Ramsey, 419; D. Pfizenmaier, 438; R. Bushway, 464; J. Pagliarini, 464; M. Musbach, 424; J. Cronkhite, 409; M. Plumb, 413; A. Grau, 409; B. Wolfgang, 497; S. Roehm, 401; M. Biggs, 425; C. Baker, 432; P. Harook, 450.

140 games and over: J. Yeakey, 160, 148; T. Doll, 143, 144; B. Roberts, 172, 158, 141; R. Presnell, 138, 140; L. Hazzard, 154; S. Ringe, 165, 179; P. Wurster, 160, 148, 210; P. Poertner, 184, 167, 215; C. Clark, 152, 168; C. Klink, 162; E. Whitaker, 155, 212, 194; C. Williams, 187, 158, 144; H. Ringe, 156; E. Heller, 177; B. Selwa, 156, 201; A. Classon, 167, 173; R. Forner, 147, 154, 162; P. Zangara, 147; E. Unterbrink, 151, 178, 156; J. Kinsley, 151; L. Stuewe, 158, 182; S. Ritz, 145, 161; M. Kozminski, 145; G. Feldman, 154, 188; C. Kiewasser, 179, 146; C. Furtney, 184, 140; J. Edick, 182, 169, 183; D. Verwey, 177, 146; L. Smith, 156; P. Smith, 203, 151, 141; L. Stoll, 157; J. Smith, 154, 164, 152; N. Hill, 151; K. Hill, 143; C. Bradbury, 215, 167; B. Torrice, 158; D. Pfizenmaier, 185, 157; P. VanGardner, 152; R. Bushway, 180, 147; J. Pagliarini, 160, 148; R. Musbach, 166; D. Judson, 143, 192, 191; J. Lonskey, 161, 155, 192; C. Rob, 144, 142; J. Cronkhite, 172; M. Plumb, 167; M. Wolfgang, 206, 147, 145; S. Roehm, 142; M. Biggs, 185; C. Baker, 160, 158; P. Harook, 153, 165.

140 games and over: J. Yeakey, 160, 148; T. Doll, 143, 144; B. Roberts, 172, 158, 141; R. Presnell, 138, 140; L. Hazzard, 154; S. Ringe, 165, 179; P. Wurster, 160, 148, 210; P. Poertner, 184, 167, 215; C. Clark, 152, 168; C. Klink, 162; E. Whitaker, 155, 212, 194; C. Williams, 187, 158, 144; H. Ringe, 156; E. Heller, 177; B. Selwa, 156, 201; A. Classon, 167, 173; R. Forner, 147, 154, 162; P. Zangara, 147; E. Unterbrink, 151, 178, 156; J. Kinsley, 151; L. Stuewe, 158, 182; S. Ritz, 145, 161; M. Kozminski, 145; G. Feldman, 154, 188; C. Kiewasser, 179, 146; C. Furtney, 184, 140; J. Edick, 182, 169, 183; D. Verwey, 177, 146; L. Smith, 156; P. Smith, 203, 151, 141; L. Stoll, 157; J. Smith, 154, 164, 152; N. Hill, 151; K. Hill, 143; C. Bradbury, 215, 167; B. Torrice, 158; D. Pfizenmaier, 185, 157; P. VanGardner, 152; R. Bushway, 180, 147; J. Pagliarini, 160, 148; R. Musbach, 166; D. Judson, 143, 192, 191; J. Lonskey, 161, 155, 192; C. Rob, 144, 142; J. Cronkhite, 172; M. Plumb, 167; M. Wolfgang, 206, 147, 145; S. Roehm, 142; M. Biggs, 185; C. Baker, 160, 158; P. Harook, 153, 165.

140 games and over: J. Yeakey, 160, 148; T. Doll, 143, 144; B. Roberts, 172, 158, 141; R. Presnell, 138, 140; L. Hazzard, 154; S. Ringe, 165, 179; P. Wurster, 160, 148, 210; P. Poertner, 184, 167, 215; C. Clark, 152, 168; C. Klink, 162; E. Whitaker, 155, 212, 194; C. Williams, 187, 158, 144; H. Ringe, 156; E. Heller, 177; B. Selwa, 156, 201; A. Classon, 167, 173; R. Forner, 147, 154, 162; P. Zangara, 147; E. Unterbrink, 151, 178, 156; J. Kinsley, 151; L. Stuewe, 158, 182; S. Ritz, 145, 161; M. Kozminski, 145; G. Feldman, 154, 188; C. Kiewasser, 179, 146; C. Furtney, 184, 140; J. Edick, 182, 169, 183; D. Verwey, 177,



# INTRODUCING

## OUR AREA'S NEW GOOD NEIGHBOR STATE FARM INSURANCE COMPANIES AGENT JERRY ASHBY

Jerry is qualified and eager to solve your insurance problems while living up to the State Farm slogan, "Like A Good Neighbor, State Farm Is There."

Stop in to his office at 105 S. Main St. for a visit, whether you are presently a client or just passing by. Quotations will gladly be given at his office on auto, life, health and homeowners insurance.



**JERRY ASHBY**

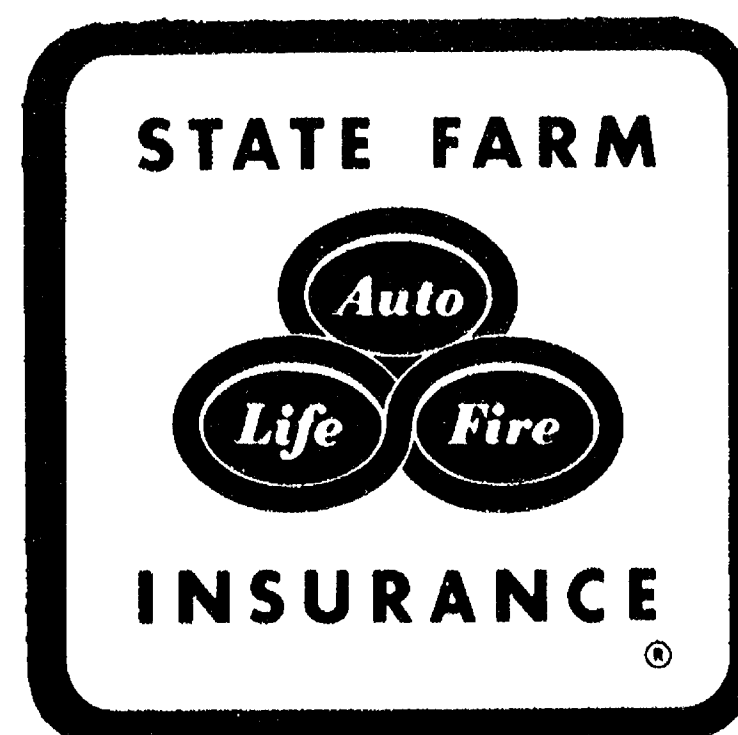


**WALLACE WOOD**

As of April 1, 1981, Jerry will be assuming the duties of the Chelsea area State Farm Agent from 33-year veteran Good Neighbor Agent Wallie Wood. Jerry has been an agent with State Farm for 19 years in Michigan and Indiana.

Wallie thanks his many clients and friends for the years of confidence and patronage shown him. You are invited to stop in, say hello and meet Jerry Ashby.

**105 S. MAIN ST., CHELSEA**  
**Office Hours: 9-5, Monday thru Friday**





Ads  
Taken  
Until  
Noon  
Monday

# PUT IT IN THE WANT ADS FOR RESULTS

Just  
Phone  
475-1371

Washtenaw County's Busy Marketplace

Quick, Economical Results . . . Give 'em a try!

Automotive 1	Automotive 1	Farm & Garden 2	CLASSIFIED ADVERTISING RATES	Want Ad Classifications	Real Estate 5	Animals, Pets 6
<b>PALMER FORD</b> <b>Now is the Time To Save!</b> <b>THIS WEEK'S SPECIAL</b> 1978 CHEVETTE 4-door Hatchback A one-owner beauty with only 24,000 miles. JUST REDUCED \$300 <b>NOW ONLY \$3795</b> <b>Cars</b> 1980 LTD Crown Victoria (Demonstrator-2) 1980 LTD Squire Wagon (Demonstrator) 1980 MUSTANG Ghia 3-dr. (Demonstrator) 1979 MUSTANG 2-dr. 1978 GRANADA 1978 PLYMOUTH Horizon 1978 PINTO 3-dr. (2) 1978 CHEVETTE 5-dr. 1978 FAIRMONT 2-dr. 1977 DODGE Monaco 2-dr. 1977 GRANADA (2) 1977 VEGA Station Wag. 1977 CAMERO 1977 PINTO wagon 1976 FORD Elite 1976 PLY. VOLARE Station Wag. 1972 DODGE <b>Trucks</b> 1979 CHEV C-10 1979 DODGE B100 <b>We Buy Used Cars &amp; Trucks At Michigan's Oldest Ford Dealer</b>	<b>BODY SHOP</b> COMPLETE FULL TIME Estimates Available <b>PALMER FORD</b> 222 S. Main 475-1301 40th <b>Nice Cars</b> We're capable of doing quality bump and touch-up work to make them even nicer! Our clean and wax prices <b>Collision Work A Specialty</b> <b>FREE ESTIMATES</b> We'd like to sell you a new car. But if you're hanging onto your present car, we'd like to make it look like new. <b>Frank Grohs Chevrolet</b> Dexter 426-4677 PICK-UP FUEL TANK and pump, \$100; pick-up tool box, \$100. Ph. 426-3208. 1970 CHEVY PICK-UP — Short box with cop. Good condition. \$650. Ph. 475-1854 after 6 p.m., ask for Dick. 1976 PLYMOUTH FURY WAGON — 1976. Power steering, power brakes, good body, lots of extras. \$1,600 or best offer. Ph. 475-1632. 75 PACER — Standard, 6 cylinder. \$1,200. Ph. 475-9523. <b>Complete Body Shop Service</b> Contact Walter Steinhilb Formerly of Westland Collision <b>Faist - Sprague Buick - Olds, Inc.</b> 475-8664 <b>Motorcycles 1a</b> 1976 YAMAHA 400 single — 2,000 miles. \$595 or offer. 1978 Yamaha 500 single, 2,000 miles, \$995 or offer. Both excellent condition. Road or trail. Ph. 475-7714. 1972 YAMAHA 650, \$500. Ph. 426-3208. <b>Farm &amp; Garden 2</b> MICHIGAN CERTIFIED SEED — Four varieties of soy beans, \$11.50 per bushel. Brablen Farms, Britton, Mich. 49229. 517-451-4010 or 517-423-5663.	<b>FARMERS</b> — Now taking orders for Vernal alfalfa, pre-inoculated, full 60-lb. bushels; also, Brome and clover seeds, and northern grown Mariner seed oats. Cole's Elevator Co., Inc., Gregory (313) 498-2735. x49-10 <b>TWO NEW IMPROVED horse feeds</b> to choose from. Super Mix and Pleasure Mix. Both made with pure cane molasses. Cole's Elevator Co., Inc., Gregory (313) 498-2735. x48-10 <b>FEED FOR PETS &amp; LIVESTOCK</b> — Softener salt, quantity prices, farm supplies. Bayce Feed, 8275 Jefferson Rd., Brooklyn, Mich. Ph. (517) 592-5627 or (517) 592-2700. Dawn. x44-5 <b>GRAIN DRILL for sale</b> — John Deere, 17-hole SBB. Ph. 663-0987. x44-2 <b>RED CLOVER SEED</b> — \$45 per bushel. Ph. 662-2811, call persistently. x44-2 <b>Recreation Eqpt. 3</b> <b>FOR SALE</b> — 2 outboard motors, 5 h.p. and 7 1/2 h.p. Both run good. \$125. Call 475-1722 after 4:30. x43-2 <b>MOBILE HOME</b> — 1979 14' x 70' Skyline, 3 bedroom plus shed. \$1,500 down, payments \$132. Ph. 1-517-596-2539. x43 <b>BOAT FOR SALE</b> — 14' Crosby, 40 h.p. Johnson (may need some work) electric ignition, two tanks. White fiberglass exterior, red wood interior, bench seats. Trailer. Best offer. Ph. 475-1371. x211f <b>For Sale 4</b> <b>Spring Is Here!</b> <b>See Us for:</b> GARDEN SEEDS LAWN & GARDEN FERTILIZER PEAT MOSS POTTING SOIL DAHLIA, GLAD, TUBEROUS BEGONIA BULBS SCOTTS LAWN PRODUCTS ORCHID FERTILIZERS & INSECTICIDES <b>Chelsea Hardware</b> Your PRO Store 110 S. Main Ph. 475-1121 150-GALLON FIELD SPRAYER — 3 point hitch. New condition. Call 475-2190. REFRIGERATOR-FREEZER — Whirlpool. Estate, white, 21 cu. ft., 4 years old, energy-saving, frost free. Good condition. \$350. Ph. 475-3290. 6-ROOM HOME ready to be moved for \$5,300, negotiable. Ph. 231-3631 or 665-3658. TELEFUNKEN stereo AM-FM — LW, SW, phono combo. Grammas treadle sewing machine, antique camera, salon hairdryer. Ph. 475-7695. KEEP carpets beautiful despite footprints of a busy family. Buy Blue Lustre. Rent electric shampooer. \$2. Chelsea Hardware.	<b>20 words or less</b> . . . \$1.00 <b>Over 20 words, 5c per word</b> (When payment accompanies order; add 75c if charged) <b>CARD OF THANKS</b> 50 words or less . . . \$2.50 <b>Over 50 words 5c per word</b> (When payment accompanies order; add 75c if charged) <b>Deadline for ads in classified section is 4 p.m. Saturday. Copy received between 4 p.m. Saturday and noon Monday may appear under a separate heading on another page.</b> <b>\$1.00 charge for tear-sheets and duplicate invoice on any ad under \$5.00.</b> <b>Any change or cancellation in advertising made after 4 p.m. Saturday may not appear in that week's issue.</b> All advertisers should check their ad the first week. The Standard cannot accept responsibility for errors on ads received by telephone but will make every effort to make them appear correctly. Refunds may be made only when erroneous ad is cancelled after the first week that it appears. <b>Garage Sale 4b</b> <b>Garage Sale</b> — Starting April 4, ending April 12. Large refrigerator, grandfather clock, large braided rugs, clothes and misc., 2921 S. Fletcher Rd., Chelsea, Ph. 475-7131. x43 <b>ANTIQUE GARAGE SALE</b> — Old tools, large prints, mirrors, frames, rocking chair, chest, trunk, table, Windsor and Queen Anne chairs, china, glass and miscellaneous, collectibles. 9 a.m. to 5 p.m. Saturday, April 4 and Sunday, April 5. 9557 Kress Rd., Lakeland—off M-36. x43 <b>Garage Sale</b> — Saturday, April 4, 8 a.m. to 4 p.m., 1237 N. Freer, Chelsea. Two-family. Antique 5-drawer oak dresser, carved bottom chairs, couch, birch veneer kitchen cupboard doors and drawers with hardware, golf pull cart, children's ski jackets and clothes, books, toys and games, children's ice and roller skates and other miscellaneous items. x43-3 <b>Antiques 4c</b> <b>ANN ARBOR</b> — THE MICHIGAN ANTIQUES SHOW & SALE, April 3, 4, 5, U. of M. Crisler Arena, Main & Stadium. 69 select dealers, 18 & early 19 c furniture & accessories, 11 a.m. - 10 p.m., Sunday 11 a.m. - 5 p.m. x43-3 <b>Real Estate 5</b> <b>Pierson &amp; Riemenschneider, Inc., Realtors 475-9101</b> <b>NEW LISTING</b> — Small starter home with lovely view and lake access. Affordable with contract terms. Only \$37,000. <b>NEW LISTING</b> — Beautiful home in excellent condition and location. 3 bedrooms, family room, dining room and much more. Terms. \$76,900. <b>NEW LISTING</b> — Newer 3-bedroom ranch, in area of lovely homes close to I-94. Call for details. One acre, Chelsea schools. Terms. \$79,900. <b>NEW LISTING</b> — 4-bedroom, historic, colonial on 2.4 acres very close to Chelsea. Many outstanding features. Terms. \$84,900. <b>NEW LISTING</b> — New, large home on 10 acres. This property offers 2,276 sq. ft., in-ground pool, pole barn and much more. Manchester schools. \$99,500. <b>CAVANAUGH LAKE</b> — Newer 3-bedroom home with 1 1/2 baths, fireplace, deck and lake frontage. \$82,900. <b>BRICK COLONIAL</b> — 4-bedroom home with hardwood floors, dining room, breezeway to garage, all on nearly an acre in the village. \$82,500. <b>NEW RANCH</b> — Cozy 2-bedroom home with beautiful fireplace, full basement on 1 1/2 acres close to Chelsea. \$71,000. <b>PRIVATE AREA</b> — Large newer home on 10 acres with beautiful view, very close to Chelsea. Many, many extras. \$125,000. <b>Eves:</b> Norma Kern 475-8132 Jeane Riemenschneider 475-1469 Dennis Bauer 475-2494 Marilyn Chasteen 475-2934 <b>Pierson &amp; Riemenschneider, Inc.</b> 111 Park St. Chelsea, Michigan 48118 475-9101 <b>Auction 4a</b> <b>ITEMS FOR SALE at auction, 5 glass blower tables, 3 flaring fixtures—manual, 1 flaring pre-heater and 5-man burners. Call 426-4671 by April 8 for date.</b>	<b>Automotive</b> . . . 1 <b>Motorcycles</b> . . . 1a <b>Farm &amp; Garden</b> . . . 2 <b>Recreation Equipment</b> . . . 3 <b>Boats, Motors, Mobile Homes, Snowmobiles, Sports Equipment</b> <b>For Sale (General)</b> . . . 4 <b>Auction</b> . . . 4a <b>Garage Sales</b> . . . 4b <b>Antiques</b> . . . 4c <b>Real Estate</b> . . . 5 <b>(Land, Homes, Cottages)</b> <b>Animals, Pets</b> . . . 6 <b>Lost &amp; Found</b> . . . 7 <b>Help Wanted</b> . . . 8 <b>Situation Wanted</b> . . . 8a <b>Babysitter</b> . . . 9 <b>Wanted</b> . . . 10 <b>Wanted To Rent</b> . . . 10a <b>For Rent</b> . . . 11 <b>(Houses, Apartments, Land)</b> <b>Misc. Notices</b> . . . 12 <b>Bus. Services</b> . . . 13 <b>Financial</b> . . . 14 <b>Bus. Opportunity</b> . . . 15 <b>Card of Thanks</b> . . . 16 <b>In Memoriam</b> . . . 17 <b>Legal Notices</b> . . . 18	<b>WATERLOO REALTY</b> CENTRALLY LOCATED between Ann Arbor, Jackson and Lansing in farming area Village. Well maintained picturesque 2-story home with character. Four bedrooms, 1 1/2 baths, living room, formal dining room, plus den or office. Handsome 3-car garage with storage loft. On 3 lots with mature pine trees. SOUTH OF I-94 — 3-bedroom ranch, full basement, 2-car garage. Nestled in wooded setting, 20 min. southwest of Chelsea. \$49,900. Short term land contract possible. WEST OF MANCHESTER — New 3-bedroom home built into hillside. Full basement with 2-car garage. 1.8 acres with good garden spot. 20 min. southwest of Chelsea. \$53,000. Short term land contract possible. 2 ACRES — Fine building site surveyed, excellent investment. On edge of small Village. \$6,000. Land contract possible with \$1,500 down. Munith-Stockbridge schools. RARE COMBINATION — 11 acres consisting of swamp, woods and water-front on small fishing lake in Waterloo Recreation Area. Good access to I-94. \$15,900. Land contract possible. 1 ACRE — High on hill in Village of Waterloo, overlooking mill race. Chelsea schools. \$13,000. <b>WATERLOO REALTY</b> 355 Clear Lake JOANN WARYWODA, BROKER Phone 475-8674 Evenings and Sundays Carol Warywoda 475-2377 Sue Lowe 1-517-522-5252 x431f <b>FRISINGER</b> <b>\$42,500</b> <b>NEW LISTING</b> — 2 bedrooms, located on a quiet tree-lined street in the Village of Chelsea, dining room, sun porch and large screened in front porch, full basement, garage. Near elementary school. <b>Village Charming</b> <b>NEW LISTING</b> — 1,500 sq. ft., 3-bedroom, two-story, 1 1/2 baths, country kitchen with pantry, dining room, 2-car garage. Close to shopping and schools. \$58,900. <b>Dutch Colonial</b> <b>NEW LISTING</b> — 5 bedrooms, open staircase, natural woodwork, fireplace, dining room, family room, 2 porches. Would also make an excellent 2-family home for extra income or rent out part and live in first level. \$69,000. <b>\$49,900</b> <b>NEW LISTING</b> — 3-bedroom ranch. Large patio deck. Beautiful lower level family room with brick wall fireplace with heatolator which can heat the whole house. 2 kitchens. Located near the Grass Lake schools. <b>Lake-Front</b> <b>VERY NICE</b> 6-year-old 2-bedroom ranch home located on Long Lake just 2 miles north of Chelsea. Glassed-in porch, large storage shed, 34' dock. Price to sell, \$58,900. <b>FRISINGER REALTY CO.</b> 475-8681 935 S. Main St. Eves: Bob Koch 426-4754 Herman Koenig 475-2613 Paul Frisinger 475-8681 Ray Knight 475-8681 George Frisinger 475-8681 x431f <b>IT PAYS TO ADVERTISE... ADVERTISE WHERE IT PAYS... WANT ADS!</b>	<b>WOODSTOCK KENNELS</b> 18531 Bush Rd. Ph. 475-1794 Inside and Outside Heated Runs Separate Housing for Cats Love Provided Free <b>FOR INFORMATION ABOUT, or to make an appointment with The Humane Society of Huron Valley Spay and Neuter Clinic please phone (313) 662-4365, 10 a.m. to 4 p.m. Monday through Friday.</b> <b>TENDER LOVING CARE for your pet</b> in my home while you're away. Call 475-8953. Ask for Krista. <b>AKC German Shepherd puppies.</b> Wormed, shots. Excellent markings. Call 761-8645, ext. 72. <b>Help Wanted 8</b> <b>PIZZA DELIVERY PERSONNEL WANTED</b> Full- or part-time. Must be 18 or older and have own car. For details, call <b>SIR PIZZA OF CHELSEA</b> 475-9119 between 9-11 a.m. <b>SETTING UP INTERVIEWS for positions</b> in expanding business. Income and hours flexible. Call weekdays, 9 to 5. Ph. 475-1684. <b>WAITRESS WANTED</b> — Morning shift. Country Restaurant, Dexter. Apply in person, see manager. <b>Situation Wanted 8a</b> <b>WILL DO SEWING and minor alterations</b> for your family. Ph. 475-7695. <b>WINDOW WASHING</b> — Call after 6 p.m. (313) 878-9908. <b>Baby Sitter 9</b> <b>BABYSITTING in my home.</b> Fun and good care for all ages. In town. Please call 475-7478, anytime. <b>Wanted 10</b> <b>FARM LAND WANTED to rent.</b> Consider small acreage. Local farmer. Call 475-2190. <b>Wanted to Rent 10a</b> <b>WANTED TO RENT</b> — Widowed lady would like a small furnished cottage on a lake close to Chelsea for June, July, August. Excellent references. Call collect. 1-813-748-4135 after 8 p.m. <b>COTTAGE WANTED to rent immediately</b> on Cavanaugh or Crooked Lake, Chelsea area. Ph. 1-722-1299. <b>For Rent 11</b> <b>NEW LARGE 2-bedroom apartment.</b> Luxurious living in quiet, small town (Novell). Appliances, carpet and drapes. \$275 per month plus deposit and utilities. References. Call collect (517) 536-8623 or 536-4909. <b>2-BEDROOM ranch near Grass Lake</b> village. \$350 per month. Phone Chuck Walters, 475-9193 or 475-2808. Thornton, Inc. <b>UNADILLA AREA, in the country.</b> 2-bedroom home, attached garage. \$260 per month plus \$250 security deposit. Available March 26. Ph. 878-9496 or 498-2703. <b>ON GRASS LAKE</b> — 3-bedroom home, nat. gas forced air heat, 15 min. from Chelsea. \$375 mo. plus security. No pets. Ph. 475-8674. <b>3-BEDROOM, full basement, on acreage.</b> \$400 per month. Realty World Brigran, Inc. Ph. 1-485-0500. <b>FURNISHED 1st floor apartment,</b> carpeted, full basement, yard. Married couple only. References required. Ph. 475-2018. <b>CHOICE 2-BEDROOM apartment,</b> heat furnished, married couples only. References required. Ph. 475-2018.

## Classified Ad Order Blank

Mail Your Copy to The Chelsea Standard  
P.O. Box 340, Chelsea, Mich. 48118

Name \_\_\_\_\_  
 Address \_\_\_\_\_  
 City \_\_\_\_\_  
 Ad is to appear week of \_\_\_\_\_ number of weeks.  
 in ☐ The Chelsea Standard \$ \_\_\_\_\_  
 and/or ☐ The Dexter Leader \$ \_\_\_\_\_ ☐ Charge Ad  
☐ Total Enclosed \$ \_\_\_\_\_  
 Please run ad under the following Classification \_\_\_\_\_  
 (Please type your ad copy to avoid errors)

Ad Rates: 20 words or less - \$1.00 if paid when ad is placed.  
 Over 20 words - 5 c per word. Cards of Thanks and Memoriams - 50 words for 2.50 if paid when ad is placed and 5c per word over 50.  
 In counting words, figures (such as road numbers) each count as 1 word. Each abbreviation counts as 1 word (you don't save money by abbreviating and you make your ad harder to read).

**The Chelsea Standard**  
 Phone (313) 475-1371



# LITTLE WANT ADS! BIG PLUSES FOR BIG RESULTS!

## For Rent 11 Bus. Services 13 Bus. Services 13 Bus. Services 13 Card of Thanks 16 Legal Notices 18 Legal Notices 18

**For Rent**  
 DUPLEX, 1-bedroom in Chelsea. \$310 including utilities. Ph. 475-7146 after 3 p.m. x45  
 3-BEDROOM RANCH near school. \$400 per month. Unfurnished. Call Lang Ramsay at 475-9193. x43-2

ROOMS by day, week or month. Excellent for the single man or retiree. Sylvan Hotel, Chelsea. Ph. 475-2911. x31ff

**FOR RENT** — Fair Service Center for meetings, parties, wedding receptions, etc. Weekdays or weekends. Contact John Wellnitz, phone 475-1518. x31ff

**CAR RENTAL** by the day, week, end, week or month. Full insurance coverage. Low rates. Call Lyle Christwell at Palmer Motor Sales, 475-1301. x25ff

4 BEDROOM HOUSE, 12 miles south of Chelsea on Pleasant Lake Rd. Ph. (313) 428-7573. x50ff

**FOR RENT** Chelsea Rod & Gun Club building for rent, for parties, meetings, receptions, etc. Contact Al Keizer, 475-8893, weekdays and evenings. x8-26

**ONE BEDROOM APARTMENT** in Stockbridge, \$225 per month, includes heat. No children or pets. Ph. 475-7757. x41ff

**AVAILABLE APRIL 1**, 2-bedroom apartment, \$350 per month. All utilities paid, no pets. Village of Chelsea. Ph. 482-6203 between 8-6. After 6 and week-ends, 475-8840. x31ff

**OFFICE SPACE** for rent on Main St. in downtown Dexter. Ph. 426-2522. x35ff

**NEWLY REDECORATED**, large 2-bedroom apartment in Stockbridge, \$265 per month, includes heat, adults only, no pets. Ph. 475-7757. x36ff

**CHELSEA APARTMENT** — 1 1/2 bedrooms plus basement, washer and dryer, garage and heat. \$320 per month. Ph. 426-4634 or 426-8930. x43-2

### Misc. Notice 12

**FREE** — Old refrigerator. Still runs. Must be moved, must pay for this ad. Call 475-8374. x43

### Bus. Services 13

#### LITTLE WACK EXCAVATING

Basement — Drainfields  
 Bulldozing — Digging  
 Snow Removal — Tree Removal  
 LICENSED AND INSURED

**Paul Wackenhut**  
 Ph. 428-8025 x52ff

**PIANO TUNING and repair** — Qualified technician. Call Ron Harris, 475-9134. x43ff

**PATCHING and PLASTERING**. Call 475-7489. x33ff

#### R. L. BAUER Builders

LICENSED and INSURED  
 Custom Building  
 Houses — Garages  
 Pole Barns  
 Roofing — Siding  
 Concrete Work  
 FREE ESTIMATES  
 Call 475-1218 x3ff

**Why hire FOUR contractors when ONE will do?**  
**HILLTOP, INC.**

PLUMBING — HEATING — ELECTRICAL  
 EXCAVATING — SEPTIC — DRAINFIELDS  
 Do It — Yourselfer Shop with advice.  
 M Thru F... 8:00 A.M. - 5:00 P.M.  
 Sat. .... 8:00 A.M. - 12:00 P.M.  
 475-2949  
 8316 Werkner Rd.  
 Chelsea, MI 48118 x31ff

**CUSTOM CATERING** for all occasions. Call 466-4502 or 996-0409. x43-4

**WINDOW CLEANING**, home and commercial. Ph. 475-7262. x43-4

### R. CARRUTHERS

LICENSED  
 RESIDENTIAL BUILDER  
 CUSTOM HOMES  
 ADDITIONS/FIREPLACES  
 PATIOS  
 ROOFING/SIDING/REPAIRS

475-7234  
 CHELSEA x30ff

### RON MONTANGE CONSTRUCTION

(RJM, INC.)

— Full carpentry services (rough and finish)  
 — Additions, remodeling and repairs  
 — Concrete  
 — Roofing and siding  
 — Cabinets and Formica work  
 — Metal farm buildings  
 — Grain storage bins  
 — Excavating and trenching

QUALITY WORKMANSHIP  
 FREE ESTIMATES  
 Ph. 426-2585

or  
 475-1080 x19ff

### ALUMINUM WELDING

Welding of boats, outboard motors, lawn mower, and chain saw parts, etc. Also, other types of welding, brazing and burning — aluminum, steel, stainless steel, cast iron.

**Dale Richardson**  
 475-7462 x9ff

**DRYWALL APPLICATION** — Hanging, finishing, spray texture remodeling and new work a specialty. Ph. 665-3452. x34ff

### SNOW PLOWING

RESIDENTIAL OR COMMERCIAL  
**DUANE DORR**  
 Phone 475-8365 x45

**PLUMBING** by licensed master plumber. Quality work, reasonably priced. 24-hour service. Ph. 487-9842. x29ff

### JIM LEACH PAINTER

Insured.  
 Interior, exterior. Barn spraying, drywall hanging and patching.  
 General Repairs  
 For free estimates call 475-1823  
 475-1823 x43-5

### WILKERSON MASONRY

RESIDENTIAL — COMMERCIAL  
 BRICK — BLOCK — STONE  
 FIREPLACES — CEMENT WORK  
 REPAIRS

**GLENN WILKERSON**  
 Ph. 475-1583 x21-33

**BRICK MASON** — Dennis Garen. Ph. 475-2584. Brick and block work. Fireplaces, chimney repair. Tuck pointing and stone work. x41ff

**PHOTOGRAPHS** — Baby, children and family pictures made in your home or yard. Good work. Good prices. Ph. 663-7422 or 475-2310. x45-5

**CERTIFIED TEACHER** available for tutoring. Credentials for special education K-12 and regular education K-8. Contact Shari, 475-2310. x45-5

### JIM W. FRENCH

**Small Dump Trucking**  
 SAND — GRAVEL — STONE  
 Ph. Chelsea 475-1173 x21ff

**CARPENTRY WORK** — Remodeling, siding, roofing, cement work, reasonable rates. Call Jim Hughes at 475-2079 or 475-2582. x14ff

**BARN SPECIALISTS** — Pole barns, 2-story barns, storage sheds & low cost commercial space. Very reasonable. Ph. 231-1728 or 231-2568. x44-3

### Norval R. Menge Builder

CUSTOM BUILT HOMES  
 ADDITIONS  
 REMODELING  
 GARAGES AND POLE BARN

We also do—  
 LIGHT HAULING  
 BACKHOE WORK  
 GENERAL REPAIRS

all our work fully guaranteed

CALL FOR FREE ESTIMATES  
 475-1005 x44ff

### YOUR BEAUTY SALON

8066 Main St., Dexter  
 Ph. 426-8878

Get a new look for spring! a curly perm or just body.

**COLD WAVE SPECIAL**  
 \$23.50, haircut included  
 Tuesday and Wednesday only  
 March and April

**BARB WITTMAN, Owner-Operator**  
**WENDY McMICHAELS, stylist**

**SPECIAL:** Men's and women's haircut with blow dry, \$8.00, Thursday evening. x40ff

### POURED BASEMENTS

Are Stronger and Faster  
 FOR FREE ESTIMATE CALL  
**WEBER HOMES**

475-2828 475-1707 x8ff

**All Insurance Needs**  
 CALL 665-3037  
**N. H. Miles, Allstate** x43

### ROSENTERER EXCAVATING, INC.

Basements — Drainfields — Septic Tanks  
 Backhoe Work — Bulldozer — Trucking  
 Gravel — Sand — Topsoil  
 Snow Removal

18740 M-52, Chelsea

**Neil Rosentreter** Al Rosentreter  
 475-1990 475-3227 x2-12

**HOUSES ROUGH-IN** or trimmed out.  
 Roofing. Free estimates. Joe Birchmeier, Ph. 426-3106. x46-4

**PIANO LESSONS** available for children and adults. Graduate of the Royal Academy, London, England. Ph. (313) 231-2173. x46-4

**CEMENT WORK** — Licensed and insured. Ph. 994-1351. x46-4

**FOUNDATION REPAIRS** or entire replacement. Licensed and insured. Ph. 994-1351. x46-4

SAND GRAVEL

### KLINK EXCAVATING

Bulldozer — Backhoe  
 Road Work — Basements  
 Trucking — Crane Work  
 Top Soil — Demolition  
 Drainfield — Septic Tank  
 Trenching, 5' up

Industrial, Residential, Commercial  
 CALL 475-7631 x31ff

### LAWN MAINTENANCE

**SNOW PLOWING**  
**SMALL LANDSCAPING**

**RICHARD SMITH**  
 475-8984 after 5 p.m. x10ff

**Window Screens**  
 Repaired

Reasonable rates

**Chelsea Hardware**

110 S. Main Ph. 475-1121 x30ff

### Floor Covering Is Our Business

TILE — SOLARIAN — HARDWOOD  
 CARPET — INSTALLATION — REPAIRS

FREE ESTIMATES

**Merkel Home Furnishings** x4ff

### DOUG'S

• INTERIOR • EXTERIOR  
 RESIDENTIAL • COMMERCIAL  
 • BOOM TRUCK  
 • WALLPAPER HANGING  
 • COMPLETE PAINTING  
 • SENSIBLE PRICES  
 • QUALITY WORKMANSHIP

CALL 475-1196

8040 METER RD CHELSEA

### C—ustom Built Homes

O—hi We Remodel too

U—can count on us

N—o Job Too Small

T—rim Inside and Out

R—ough-in Only if

Y—ou want to Finish

S—iding Aluminum, 5" Gutters

I—mmediate Attention

D—ALE COOK & CO.

E—stimates, Free

BUILDERS

Please Call  
 475-9153  
**DALE COOK** x17ff

### LEONARD REITH

Master Plumber

Licensed Electrician

Hot Water Heat

18238 N. Territorial Rd.

Chelsea, Mich. 48118

Phone: 475-2044 x52ff

### McCulloch

Portable Generators

Chain Saws

WE SELL, SERVICE  
 SHARPEN AND TRADE

**Chelsea Hardware** x21ff

### INCOME TAX FARM, BUSINESS OR PERSONAL

Started in Chelsea in 1953. Now in Ann Arbor.

**CHELSEA BOOKKEEPING AND TAX SERVICE**

Room 202  
 201 S. Main St., Ann Arbor  
 By Appointment

**PHONE 769-0924** x43-13

**LOCKWORKS** — Locks repaired, rekeyed, keys made. Ph. 475-8328. x32ff

### BOB'S CARPET SALES

Service and Quality Guaranteed  
 226 W. Michigan Ave.  
 Ypsilanti, Mich.

Carpet and Other  
 Floor Coverings

Ph. Ypsi 485-1713

483-3235, 9 to 6

or Gary Paxton, (313) 498-2537  
 9 a.m. to 10 p.m. x43-5

**WINDOW CLEANING** and Oiling. For free estimates call John Osinski at 475-7071. x44-4

### Financial 14

PRIVATE PARTY. Purchasers land contracts and mortgages. Eves. only 475-1469. x21ff

**LAND CONTRACTS PURCHASED** — Any size, any property type. Courteous and reliable service. Call Dan Duncan, Ann Arbor Real Estate Co., 668-8595. x33ff

Please Notify Us  
 In Advance of  
 Any Change in Address

### EDWARDS Home Maintenance Service

SIDING — INSULATION  
 STORM WINDOWS & DOORS

Free Estimates  
 Licensed — Insured

**PHONE 426-5039**

Ask for Joe

### THANK YOU

I wish to express my sincere thanks to my relatives, friends, neighbors, members of St. Paul church, fraternal sisters and brothers and senior citizens for all the prayers, flowers, gifts, visits, numerous cards and phone calls during my stay at the hospital. A special thanks to the Rev. E. R. Koch and my nephew, Father David Harvey, for their visits and prayers; also to Dr. Yarr and his staff, Kay Anderson and to all the nurses in CCU and rooms 151 and 154. I never realized I had so many friends and may God bless each one of you for your concerns and kindness.  
 Marguerite Harvey Miley.

### CARD OF THANKS

Many thanks to family, relatives, neighbors and friends for phone calls, cards, prayers, and visiting me at the hospital and at home since I've been ill.  
 Lloyd May.

### In Memoriam 17

#### IN MEMORIAM

In loving memory of Alfred Titus who passed away April 4, 1973. Your memory is a keepsake with which we will never part though God has got you in his keeping we still have you in our hearts.

Your sister,  
 Mrs. Frank Reed  
 and all the family.

### Legal Notices 18

**STATE OF MICHIGAN**  
 In the Circuit Court for the County of Washtenaw.

General Civil Action  
 File No. 81-30413-C-2

**ALBERT HACK and FLORENCE E. HACK, Plaintiffs,**  
 -vs-  
**WALTER CYKIERT, HERMAN ROSS, ASA SHAPIRO and HARRY BRODY, Joint Venturers, d/b/a SCIO DEVELOPMENT COMPANY, Defendants.**

**ORDER TO ANSWER IN PUBLICATION CASES**

At a session of said Court held on the 25th day of March, 1981, Washtenaw County Building, Ann Arbor, Michigan.

**PRESENT:** The Honorable Henry T. Conlin, Circuit Judge.

On the 25th day of March, 1981, an action was filed by **ALBERT HACK and FLORENCE E. HACK, Plaintiffs,** against **WALTER CYKIERT, HERMAN ROSS, ASA SHAPIRO and HARRY BRODY, Joint Venturers, d/b/a SCIO DEVELOPMENT COMPANY, Defendants,** in this Court to Foreclose a Contract between the Plaintiffs as sellers and the Defendants as purchasers.

At the time of the filing of the Complaint, the following described premises:

**PARCEL 1.** Beginning at the north quarter corner of Section 29, Town 2 South, Range 5 East, Scio Township, Washtenaw County, Michigan; thence south 89° 47' 30" west 1181.46 feet along the south line of said section; thence north 0° 09' west 1330.49 feet; thence north 89° 53' east 1182.06 feet along the north line of the southeast quarter of the southwest quarter of said section; thence south 0° 07' 25" east 1328.62 feet along the north and south quarter line of said section to the place of beginning, being a part of the southeast quarter of the southwest quarter of said Section 29, Scio Township, containing 35.50 acres of land more or less, subject to the rights of the public over the southerly 33.0 feet thereof as occupied by Park Road.

**PARCEL 2.** Beginning at the south quarter corner of Section 29, Town 2 South, Range 5 East, Scio Township, Washtenaw County, Michigan; thence south 89° 47' 30" west 1181.46 feet along the south line of said section; thence north 0° 09' west 1330.49 feet; thence north 89° 53' east 1182.06 feet along the north line of the southeast quarter of the southwest quarter of said section; thence south 0° 07' 25" east 1328.62 feet along the north and south quarter line of said section to the place of beginning, being a part of the southeast quarter of the southwest quarter of said Section 29, Scio Township, containing 35.50 acres of land more or less.

IT IS HEREBY ORDERED that the Defendants, **WALTER CYKIERT, HERMAN ROSS, ASA SHAPIRO and HARRY BRODY, Joint Venturers, d/b/a SCIO DEVELOPMENT COMPANY,** shall answer or take such other action as may be required by law on or before the 1st day of June 1981. Failure to comply with this order will result in a judgment by default against such defendants for relief demanded in the Complaint filed in this case.

PREPARED BY:  
**KEUSCH & FLINTOFT**  
 Attorneys for Plaintiffs  
 BY: **PETER C. FLINTOFT (P-13531)**  
 121 South Main Street  
 Chelsea, Michigan 48118  
 Phone: (313) 475-8671

March 31-April 7-14-21

**MORTGAGE SALE**—Default has been made in the conditions of a mortgage made by **JAMES L. MILLER and DEBRA L. MILLER, Husband and Wife,** to **ANN ARBOR MORTGAGE CORPORATION,** a Michigan Corporation, Mortgagee, Dated April 30, 1979, and recorded on May 3, 1979, in Liber 1704, on page 795, Washtenaw County Records, Michigan, and assigned by said Mortgagee to **FEDERAL NATIONAL MORTGAGE ASSOCIATION,** a National Mortgage Association, by an assignment dated April 30, 1979, and recorded on May 3, 1979, in Liber 1704, on page 799, Washtenaw County Records, Michigan, on which mortgage there is claimed to be due at the date hereof the sum of FORTY-TWO THOUSAND TWO HUNDRED THIRTY-NINE AND 80/100 Dollars (\$42,239.89), including interest at 11% per annum.

Under the power of sale contained in said mortgage and the statute in such case made and provided, notice is hereby given that said mortgage will be foreclosed by a sale of the mortgaged premises, or some part of them, at public vendue, at the Huron St. entrance to the Washtenaw County Building in Ann Arbor, Michigan, at 10:00 o'clock A.M., Local Time, on April 30, 1981.

Said premises are situated in the Township of Ypsilanti, Washtenaw County, Michigan, and are described as:

Lot 119, Woodland Acres Subdivision No. 2, of part of the South 1/4 of Section 34, Town 2 South, Range 7 East, Superior Township, Washtenaw County, Michigan, according to the plat thereof as recorded in Liber 17 of Plats, pages 39 and 40, Washtenaw County Records.

During the six months immediately following the sale, the property may be redeemed.

Dated: March 24, 1981.  
**FEDERAL NATIONAL MORTGAGE ASSOCIATION**  
 Assignee of Mortgage  
**GEORGE E. KARL,**  
 Attorney for Assignee of Mortgage  
 1475 Penobscot Bldg.  
 Detroit, Michigan 48226  
 March 24-31-April 7-14-21

### Legal Notices 18

**MORTGAGE SALE**—Default has been made in the conditions of a mortgage made by **JOSEPH CONDOLL JR. and JOYCE L. CONDOLL, Husband and Wife,** to **ANN ARBOR MORTGAGE CORPORATION,** a Michigan Corporation, Mortgagee, Dated August 17, 1979, and recorded on August 21, 1979, in Liber 1723, on page 709, Washtenaw County Records, Michigan, and assigned by said Mortgagee to **FEDERAL NATIONAL MORTGAGE ASSOCIATION,** a National Mortgage Association, by an assignment dated August 17, 1979, and recorded on August 21, 1979, in Liber 1723, on page 713, Washtenaw County Records, Michigan, on which mortgage there is claimed to be due at the date hereof the sum of FORTY-THREE THOUSAND SIX HUNDRED SIXTY AND 40/100 Dollars (\$43,660.40), including interest at 10% per annum.

Under the power of sale contained in said mortgage and the statute in such case made and provided, notice is hereby given that said mortgage will be foreclosed by a sale of the mortgaged premises, or some part of them, at public vendue, at the Huron St. entrance to the Washtenaw County Building in Ann Arbor, Michigan, at 10:00 o'clock A.M., Local Time, on April 30, 1981.

Said premises are situated in the Township of Ypsilanti, Washtenaw County, Michigan, and are described as:

Lot 40, Turtle Creek Subdivision, according to the plat thereof, as recorded in Liber 19 of Plats, Pages 11 and 12, Washtenaw County Records.



## Legal Notices 18

STATE OF MICHIGAN  
In the District Court for the 14th Judicial District.

File No. CV 14-3-80-0042  
ERWIN A. SALLSBURY, J. D., Plaintiff.

vs.  
MARCEA JEAN WILTSE, Defendant.

**NOTICE OF SALE**  
Notice is hereby given that, by virtue of an execution issued out of the District Court for the 14th Judicial District of Michigan, County of Washtenaw, Michigan against Marce Jean Wiltse, upon a judgment in a cause wherein Erwin A. Sallsbury, J. D., was Plaintiff, and the said Marce Jean Wiltse was Defendant, I have levied on the following land situated in the County of Washtenaw, Michigan and described as follows:

Land situated in the Township of Webster, County of Washtenaw, State of Michigan described as follows:

Commencing at the North ¼ post of Section 5, T1S, R2E, of Section 5, thence E 841 Ft. in N line of Section for place of beginning, thence East 129.8 Ft. in North line of Section, thence South 15 degrees 27' East 215.36 Ft., thence South 68 degrees 27' 30" W. 126.5 Ft. in center of road, thence North 15 degrees 27' W. 264.22 Ft. to place of beginning, being part of North East FRI ¼, Section 5, T1S R2E 0.70 acres.

Also known as 6812 Strawberry Lake Road, Dexter, Michigan. I shall expose all of said described premises for sale at public sale, to the highest bidder, at the Huron Street door of the Washtenaw County Building, at Ann Arbor, in said County of Washtenaw, Michigan, that being the place of holding the Circuit Court within said county, on the 14th day of May 1981 at 10 o'clock in the forenoon.

Dated: March 18, 1981.  
Earl Ray  
Washtenaw County Deputy Sheriff.  
March 24-31-April 7-14-21-28

## Nutrition Week Being Observed at Child Care Center

Chelsea Community Hospital Child Care Center will help celebrate National Nutrition Week, March 30-April 3. Pat Asp, the hospital dietitian, will visit the center each day and discuss various aspects of nutrition and good health, including the four main food groups, proper care of teeth, and the importance of exercising the body. The children will be involved in various cooking projects and other learning activities.

Topping off the week will be a specially prepared lunch in the Hospital's Conference Room for children enrolled in the Child Care Center and their parents.

## U. S. Leads World In Agricultural Exports

Agricultural exports, nationally, totaled a record \$40 billion in 1980—by far the leading positive factor in the U. S. balance of trade. These exports provide employment for 1.3 million U. S. workers, and generate more than \$82 billion in domestic economic activity. America's 2.4 million farms provide enough food and fiber for the domestic population (about 230 million) as well as exporting more than any other nation in the world.

With less than seven percent of the world's land, the U. S. produces 43 percent of the world's corn and 60 percent of the world's soybeans. U. S. agriculture supplies 44 percent of the world's total wheat exports and 71 percent of the world's coarse grain exports. These exports make it possible to pay for the major foreign imports into the U. S., such as oil, automobiles and electronics.

Subscribe today to The Standard.

## Michigan Antique Show, Sale Set At Crisler Arena

The 7th annual Michigan Antique Show and Sale will open Friday, April 3. It will continue throughout the week-end between the hours of 11 a.m. and 10 p.m., Friday and Saturday and will open Sunday at 11 a.m. and close at 5 p.m. A total of 69 dealers from across the United States will display their goods in room-like settings.

Furniture, glassware, toys, weavings and art will make up a large portion of the show. Oriental art and artifacts will also be exhibited. All items will be available for purchase.

This annual event will be held at Crisler Arena and will be co-sponsored by the University of Michigan M Club. There will be an admission charge and a dining room will be available.

## Cribbage Tourney In Finals

Following the third evening of cribbage play, the top eight finishers heading into the tournament finals include Darlene Barry, Ginny Wheaton, Art Steinaway, Rodney Houle, Duane Boyer, Jo Anderson, Skip Schluppe and David Brennan. This octet competed at 7 p.m. Monday, March 30 at the Village Bakery. As of press time, the final results were not available.

Following the final semi-final round, the standings were as follows:

	W	L	Pts.
Darlene Barry	23	7	701
Ginny Wheaton	21	9	869
Art Steinaway	20	10	1006
Rodney Houle	19	11	1155
Duane Boyer	19	11	1131
Jo Anderson	17	13	1339
Skip Schluppe	16	14	1543
David Brennan	16	14	1480
David Kruse	16	14	1476
Steve Kincer	16	14	1456
Hap Sibert	16	14	1446
Jim Hoffmeyer	16	14	1416
Art Clemes	15	15	1621
Richard Dotts	14	16	1699
Tom Penhalligon	14	16	1628
Mike Kelley	13	17	1764
Alberta Colby	13	17	1717
Bob Guth	13	17	1703
Bob Breuninger	13	17	1682
Geni Schirrmacher	12	18	1880
Mark Steinaway	12	18	1854
Rheta Collins	11	19	2079
Al Feilhaber	11	19	2059
Tessie Monroe	11	19	1953
Bob Meyer	11	19	1939
Carl Bleshe	8	12	1113
Ted Lewis	3	7	631

Cancer is not contagious and cannot be transmitted from person to person. When cancer strikes, understanding, openness and communication are needed within a family and among close friends. When you have questions about cancer, call the Public Response Program at the Michigan Cancer Foundation, a Torch Drive Agency. Call toll-free 1-800-462-9191.

## Forensics Team Chosen To Compete in Tournaments

Selection of students to make up the 1981 Chelsea High school district forensics team was made last week in finals rounds held in both classrooms and in the auditorium before the entire student body. An Eastern Michigan University forensics coach assisted in the final selections.

Persons chosen will participate in the district forensics tournament to be held at Napoleon High school Tuesday, March 31.

In humorous reading, Phil Powers and Rick Eder placed first and second, respectively. Zach Smith was first and M. M. Ward, second in serious reading. Selected for storytelling abilities were Connie Dault, first, and Paul Beaudoin, second.

The first open interpretive duo was made up of Patrick Powers and Holly McCutcheon. Second place went to Dave Lange and Herb Pearson. The first-place sophomore interpretive duo was Eric Kruger and Tim Benjamin while second place was awarded to Rob Moore and Ken Nadeau.

First place in multiple reading went to girls, made up of Kim Harvey, Anne Lewis, Nancy Heller, Marcia Warren and Pris Drew. The Jukes Family—Mary Anderson, Cathy Boonius, Duane Robbins, Chuck Dalton and Sara Leisinger—took second place in the finals.

In informative speaking, Amy Unterbrink was given first-place honors while Katie Uilman's presentation afforded her second place.

Brian Koepele finished in first place following his open impromptu; Jim Herter was second. Sophomore impromptu winners were Jeff Koepele, first, and Dan Klemer, second.

In extemporaneous speaking, Will Rosentreter was judged as a first-place selection.

Kathy Waldyke took a first place in radio news, followed by Paul Brehob in second place.

These first- and second-place selections will travel to Napoleon to compete against Napoleon, Jackson, Jackson Parkside and Vandercook Lake High schools. Winners of this tournament will advance to the regional forensics

tournament to be held at Brighton later in April.

## Pinckney Area Youth Completes Marine Combat Training

Marine Pfc. Jordan E. Hannah, son of Barbara J. Homer of 3390 Orchard Dr., Pinckney, has completed the infantry combat training course at the Marine Corps Base, Camp Lejeune, N.C.

During the six-week course, he received classroom instruction and participated in field exercises involving infantry tactics, the construction and camouflage of fighting positions, and the use of mines, demolitions and intra-company communications equipment.

## OPEN SUNDAYS

10 a.m. to 2 p.m.  
MAIN STORE ONLY  
1414 S. MAIN ST., CHELSEA  
Phone 475-9106

The **PARTS**  
**PEDDLER**  
AUTO SUPPLY STORES

Why Did  
Donna S.  
have a  
"Just Married"  
sign on her car  
last Thursday?

## ANN ARBOR'S 3rd ANNUAL

# 50% OFF

# EXTRAVAGANZA

## 2 Days of Sales Madness!

**What:** Area merchants & wholesalers join together to offer you brand new merchandise & services at 50% off and more!

**Where:** U-M Track & Tennis Building (State and Hoover)

**When:** Saturday, April 4 10 a.m. - 8 p.m.  
Sunday, April 5 10 a.m. - 6 p.m.

men's and women's clothing • car stereos • sports equipment • plants  
cowboy hats • wicker furniture • running shoes • down jackets • records  
unique candles • art prints • stained glass lamps • jewelry • waterbeds  
jeans • stereo equipment • leather goods • musical equipment • t-shirts  
health club memberships • SEMCA memberships  
subscription TV memberships and more!

## Ride the Mechanical Bull!

## FREE ADMISSION

Presented by American Retail Promotions, Inc. and SEMCA

## OFFICIAL NOTICE REGULAR MEETING OF THE DEXTER TOWNSHIP BOARD

will be held  
**TUESDAY, APRIL 7, 1981 - 7:30 p.m.**  
at the  
Dexter Township Hall, 6880 Dexter-Pinckney Rd.  
ITEMS TO BE DISCUSSED:

- 1) Merkel case.
- 2) Sign Commission report.
- 3) Apportionment Budget, 1981-1982.

**WILLIAM EISENBEISER**  
Dexter Township Clerk

Subscribe to The Chelsea Standard

## WEST BANK

PRESENTS

## LIVE MUSIC

WITH

**J. R.**

Tuesday through Saturday

DANCING 7 NIGHTS

at the

**HOLIDAY INN WEST**

2900 JACKSON AVE.

ANN ARBOR

PHONE 665-4444

# Save me some

**NUMBERS 1980, 1981, 3100**

Those are getting to be pretty familiar words around here...because now's the time to get ready for another big year with Peterson® Brand Soybean Seed. We've got a good supply of Peterson varieties and brands, some just right for your growing conditions. And this season, we've got a couple of new numbers that look very promising.

## KEITH BRADBURY

1065 EASTON RD., DEXTER, MICH.

PH. 475-8316



**Peterson**  
BRAND  
SOYBEAN SEED

Peterson Soybean Seed Division  
Waterloo, IA • LeRoy, IL • Grand Rapids, OH

Division of Pioneer Hi-Bred International, Inc.



The Limitation of Warranty and remedy appearing on the label is part of the terms of sale. \*Registered Trademark of Pioneer Hi-Bred International, Inc.



# Church Services

**Evangelical—**  
ST. JACOB EVANGELICAL LUTHERAN  
The Rev. Andrew Bloom, Pastor  
12501 Rietmiller Rd., Grass Lake  
Every Sunday—  
9:00 a.m.—Sunday school.  
10:15 a.m.—Divine services.

ST. THOMAS  
EVANGELICAL LUTHERAN  
Ellsworth and Haab Rds.  
The Rev. Paul Puffe, Pastor  
Every Sunday—  
9:30 a.m.—Sunday school.  
10:45 a.m.—Worship service.

FAITH EVANGELICAL LUTHERAN  
9575 North Territorial Rd.  
The Rev. Mark Porinsky, Pastor  
Wednesday, April 1—  
9:00 a.m.—Bible brunch at Loseys.  
9:15 p.m.—Confirmation.  
9:30 p.m.—Lent V, Simon of Cyrene.  
9:30 p.m.—Choir practice.  
Thursday, April 2—  
12:30 p.m.—Ladies luncheon at St. Peter's, Plymouth.  
Sunday, April 5—  
8:45 a.m.—Sunday school, Adult Class.  
10:00 a.m.—Worship service with Communion. Sermon on Mark/Matthew 5:10-12.  
Monday, April 6—  
8:00 p.m.—Elders.

OUR SAVIOR LUTHERAN  
1515 S. Main, Chelsea  
The Rev. Franklin H. Giebel, Pastor  
Broadcast Sundays—  
Watch "This is the Life."  
7:00 a.m.—WXYZ, channel 7, Detroit.  
7:30 a.m.—The Church of the Lutheran Hour.  
8:35 a.m.—WJIM, 1450 AM, Jackson.  
12:30 p.m.—WYFC, 1520 AM, Ypsilanti.  
Every Sunday—  
9:00 a.m.—Sunday school.  
10:30 a.m.—Morning worship.  
Every Monday—  
8:45 a.m.—7th grade confirmation.  
8:30 p.m.—8th grade confirmation.  
Every Thursday—  
7:00 p.m.—Adult Information Class.

ZION LUTHERAN  
Corner of Fletcher and Waters Rds.  
The Rev. John R. Morris, Pastor  
Tuesday, March 31—  
4:00 p.m.—Joy-makers.  
8:00 p.m.—Shuffleboard banquet for winners. All ladies invited.  
Wednesday, April 1—  
7:30 p.m.—Lenten Devotional V.  
Saturday, April 4—  
9:00 a.m.—Youth Instruction.  
Sunday, April 5—  
9:00 a.m.—Sunday school and adult Inquirer class.  
10:15 a.m.—Worship service with Holy Communion. Reception for new members.

**United Church of Christ—**  
ST. JOHN'S EVANGELICAL AND REFORMED  
Francisco  
The Rev. Paul McKenna, Pastor  
Every Sunday—  
10:30 a.m.—Sunday school and worship service.  
First Sunday of every month—  
Communion.

BETHLE EVANGELICAL AND REFORMED  
Freedom Township  
The Rev. Roman A. Reineck, Pastor  
Every Sunday—  
10:00 a.m.—Worship service.

ST. PAUL  
The Rev. Erwin R. Koch, Pastor  
Tuesday, March 31—  
7:00 p.m.—Building and Grounds Committee.  
Wednesday, April 1—  
4:15 p.m.—Children's Choir rehearsal.  
7:30 p.m.—Lenten service, Congregational church.  
7:45 p.m.—Chancel Choir rehearsal.  
Thursday, April 2—  
9:30-11:30 a.m.—Bible study. Church Lounge. Babysitters available.  
Saturday, April 4—  
XYZ's theater trip.  
Sunday, April 5—  
9:00-10:30 a.m.—Church school.  
10:30 a.m.—Morning worship. Child care nursery provided for infants and toddlers.  
2:30 p.m.—Jr. Youth Fellowship.

CONGREGATIONAL CHURCH  
The Rev. Carl Schwann, Pastor  
Every Sunday—  
10:30 a.m.—Worship. Nursery provided for pre-schoolers.  
Second Thursday—  
7:00 p.m.—Women's Fellowship.  
Weekly Bible study—As scheduled in Sunday bulletin.  
Youth groups—As scheduled in Sunday bulletin.

ST. JOHN'S  
Rogers Corners, Waters and Fletcher Rds.  
The Rev. Gary Kwiatek, Pastor  
Every Sunday—  
10:30 a.m.—Worship and Sunday school.

**Church of the Nazarene—**  
SOUTHWEST  
CHURCH OF THE NAZARENE  
14555 Holmes Rd. (M-106)  
Fred Bridge, Pastor  
Every Sunday—  
10:00 a.m.—Sunday school.  
11:00 a.m.—Morning worship.  
6:00 p.m.—Evangelical service.  
Every Wednesday—  
7:00 p.m.—Bible Study and Prayer Meeting.

**Church of Christ—**  
CHURCH OF CHRIST  
13661 Old US-12, East  
Evangelist Robert B. Murray  
Every Sunday—  
7:30 a.m.—Radio program-WNRS in Saline.  
9:30 a.m.—Bible study.  
10:30 a.m.—Worship service. Nursery available.  
Every Wednesday—  
7:30 p.m.—Bible study classes for all ages.

**Non-Denominational—**  
CHELSEA CHURCH OF THE UNCOMPROISING WORD  
11452 Jackson Rd.  
The Rev. Chuck Clemons, Pastor  
Every Sunday—  
10:00 a.m.—Sunday school.  
11:00 a.m.—Morning worship.  
6:30 p.m.—Evening worship.  
Every Wednesday—  
7:00 p.m.—Midweek prayer and Bible study.

IMMANUEL BIBLE  
145 E. Summit St.  
The Rev. Ron Little, Pastor  
Every Sunday—  
9:45 a.m.—Sunday school, nursery provided.  
11:00 a.m.—Morning worship, nursery provided.  
6:00 p.m.—Evening worship.  
Every Wednesday—  
7:00 p.m.—Family hour, prayer meeting and Bible study.

COVENANT  
Dr. R. J. Ratcliff, Pastor  
K. of C. Hall, W. Old US-12  
Every Wednesday—  
8:00 p.m.—Choir.  
Every Saturday—  
9:00 a.m.—Confirmation class.  
Every Sunday—  
3:00 p.m.—Sunday school.  
4:00 p.m.—Worship service. Nursery provided.

MT. HOPE BIBLE  
12284 Triest Rd., Grass Lake  
The Rev. R. H. Brandow, Pastor  
Every Sunday—  
10:00 a.m.—Sunday school.  
11:00 a.m.—Morning worship.  
7:00 p.m.—Evening service.  
Every Wednesday—  
7:00 p.m.—Bible study.

NORTH SHARON BIBLE  
Sylvan and Washburne Rds.  
The Rev. William Enlen, Pastor.  
Every Sunday—  
10:00 a.m.—Sunday school.  
11:00 a.m.—Worship service.  
6:00 p.m.—Senior High Youth meeting. Youth choir.  
7:00 p.m.—Evening worship service. (Nursery available.) All services interpreted for the deaf.  
Every Wednesday—  
7:00 p.m.—Bible study and prayer meeting. (Nursery available.) Bus transportation available: 428-7222.

CHELSEA CHRISTIAN MEN'S FELLOWSHIP PRAYER BREAKFAST  
Chelsea Hospital Cafeteria.  
First Saturday Each Month—  
8:00 a.m.—Breakfast.  
8:30-10:00 a.m.—Program.  
CHELSEA HOSPITAL MINISTRY  
Every Sunday—  
10:00 a.m.—Morning service, Chelsea Community Hospital Cafeteria.

**Episcopal—**  
ST. BARNABAS  
The Rev. Fr. Jerrold F. Beaumont, B.S.P.  
Every Sunday—  
10:00 a.m.—Holy Communion first, third and fifth Sundays.  
10:00 a.m.—Morning prayer, second and fourth Sundays.  
Church school and nursery every Sunday.  
The first Sunday of the month is a Family Worship Service. Coffee hour follows all Sunday services. Bishop's Committee first Sunday of every month. Episcopal Church Women third Sunday of the month.  
Every Wednesday—  
7:30 p.m.—Holy Communion.

**Christian Scientist—**  
FIRST CHURCH OF CHRIST SCIENTIST  
1833 Washtenaw Ave., Ann Arbor  
Every Sunday—  
10:30 a.m.—Sunday school, morning service.

**Catholic—**  
ST. MARY  
The Rev. Fr. David Philip Dupuis, Pastor  
Every Saturday—  
5:00 p.m.—Mass.  
Confessors immediately following Mass on Saturday.  
Every Sunday—  
8 a.m., 10 a.m. and 12 noon—Mass.

**Mormon—**  
CHURCH OF JESUS CHRIST OF LATTER-DAY SAINTS  
Chelsea Branch-Rebekah Hall  
Every Sunday—  
9:30 a.m.—Sacrament.  
10:50 a.m.—Sunday school.  
11:40 a.m.—Priesthood.

**Methodist—**  
SALEM GROVE UNITED METHODIST  
3320 Notion Rd.  
The Rev. Ronald Brunger, Pastor  
Every Sunday—  
9:30 a.m.—Sunday school.  
10:30 a.m.—Worship service.

FIRST UNITED METHODIST  
Parks and Territorial Rds.  
The Rev. Larry Nichols and  
The Rev. David Goldsmith, Pastors  
Every Sunday—  
9:15 a.m.—Morning worship.  
10:00 a.m.—Sunday school.

WATERLOO VILLAGE UNITED METHODIST  
8118 Washington St.  
The Rev. Larry Nichols and  
The Rev. David Goldsmith, Pastors  
Every Sunday—  
10:00 a.m.—Sunday school.  
11:15 a.m.—Worship service.

FIRST UNITED METHODIST  
The Rev. Marvin H. McCallum, Pastor  
Tuesday, March 24—  
11:00 a.m.—Ministerial Fellowship meeting at Zion Lutheran church.  
Wednesday, April 1—  
12:00 p.m.—Lenten Study Class will meet in the Crippen Building.  
3:30 p.m.—Praise Choir.  
7:30 p.m.—Lenten service in the Education Building. The film, "Resurrection—The Event" will be shown.  
8:15 p.m.—Chancel Choir.  
Thursday, April 2—  
12:00 p.m.—United Methodist Women salad luncheon and general meeting in the Crippen Building.  
Sunday, April 5—  
10:00 a.m.—Worship service. Crib nursery for infants up to the age of two and church school for children ages two through five. Kindergarten through fifth graders will attend the worship service until the second hymn is sung. Students in grades six through 10 and the Adult Class will meet following the close of the worship service.  
11:45 a.m.—All church school classes will be dismissed.  
Monday, April 6—  
8:30 p.m.—Youth Bell Choir.  
7:30 p.m.—Carroll Choir.

NORTH LAKE UNITED METHODIST  
The Rev. John Elliott, Pastor  
Every Sunday—  
10:00 a.m.—Worship service. Nursery provided for children up to second grade.  
CHELSEA FREE METHODIST  
Meetings at St. Barnabas Episcopal Church  
Mearl Bradley, Pastor  
Wednesday, April 1—  
3:30 p.m.—Children's choir.  
7:30 p.m.—Growth Groups.  
Thursday, April 2—  
7:00 p.m.—Super Thursday—CYC, FMY, Junior High.  
Saturday, April 4—  
Church Work Day.  
Sunday, April 5—  
3:45 p.m.—Sunday school.  
5:00 p.m.—Worship service.

METHODIST HOME CHAPEL  
Chaplain Ira Wood  
Every Sunday—  
8:45 a.m.—Worship service.

SHARON UNITED METHODIST  
Rev. Ronald L. Higgins, Pastor  
Corner Pleasant Lake Rd. M-52  
Every Sunday—  
10:00 a.m.—Sunday school.  
11:00 a.m.—Worship service.

**Presbyterian—**  
FIRST UNITED PRESBYTERIAN  
2000 Old US-12  
William D. Kuenzli, Pastor  
Every Sunday—  
9:45 a.m.—Sunday school.  
11:00 a.m.—Worship service.

**Baptist—**  
CHELSEA BAPTIST  
37 Wilkinson St.  
The Rev. Thode B. Thodeson, Pastor  
Every Sunday—  
10:00-10:45 a.m.—Church school.  
10:50 a.m.—Morning worship.  
11:20 a.m.—Junior church school.  
6:00 p.m.—Evening fellowship.  
Every Wednesday—  
7:00 p.m.—Mid-week Bible study and prayer.

GREGORY BAPTIST  
The Rev. David Brinkman, Pastor  
Every Sunday—  
9:45 a.m.—Sunday school.  
11:00 a.m.—Morning worship.  
6:00 p.m.—Young people.  
7:00 p.m.—Evening worship.

**Orders Still Accepted By Soil District for Tree, Shrub Seedlings**  
Washtenaw County Soil Conservation District Board of Directors has announced the last chance to order tree and shrub seedlings for the spring of 1981.

According to William Fishbeck, board chairman, there are limited quantities of White Pine, Red Pine, Scotch Pine, Austrian Pine, White Spruce, Norway Spruce and Colorado Blue Spruce. The District also has Autumn Olive, Silky Dogwood and Honeysuckle shrubs available.

If you are interested, just call the District office at 761-6721 or stop by at 6101 Jackson Rd., Ann Arbor, to pick up an order form. Orders will be accepted until April 16.

dancing & singing Telegrams  
-313-663-5788  
DANCE 'O GRAM



**RETIREMENT:** Following 22 years and two months of service, Russell Maurer, left, retired from Dana Corp., effective March 1. At special ceremonies, he was presented with a Dana Retirement Pin and a blue blazer by Supervisor Phil Wels, chief engineer. Since his retirement, Maurer and his wife, Virginia, have moved to Harrison.

## PROCLAMATION

WHEREAS, birth defects seriously threaten the health of our country; and  
WHEREAS, there are about 15 million Americans afflicted with the physical and/or mental damage that results from birth defects; and  
WHEREAS, the Washtenaw-Livingston Chapter of the March of Dimes Birth Defects Foundation is the primary backer of many state and national programs of research, medical services and education for the prevention of birth defects; and  
WHEREAS, the entire nation will WALK AMERICA the weekend of April 25 and 26, 1981;  
NOW, THEREFORE, I, Charles S. Ritter, president, Village of Chelsea, Mich., do hereby proclaim April, 1981 as March of Dimes Birth Defects Prevention Month. I appeal to every citizen in this community to aid in whatever way possible, this critical drive to continue and expand programs that aim to conquer our nation's major child health problem.

Charles S. Ritter, President  
President, Village of Chelsea, Mich.

## Guest Speaker Scheduled Sunday At Baptist Church

The Rev. Joe Atkinson, pastor of Redeemer Baptist church of Monroe, will be the guest speaker Sunday, April 5 at the Chelsea Baptist church, 337 Wilkinson St. He will address the congregation at both the 10:50 a.m. and the 6 p.m. services.

The Rev. Atkinson is a graduate of Wheaton College, Wheaton, Ill., and Gordon Divinity School, Maine. He served one term as president of the American Baptist Churches of Michigan and is presently one of the co-ordinators for the Charismatic Fellowship within the American Baptist Convention.

## Orders Still Accepted By Soil District for Tree, Shrub Seedlings

Washtenaw County Soil Conservation District Board of Directors has announced the last chance to order tree and shrub seedlings for the spring of 1981.

According to William Fishbeck, board chairman, there are limited quantities of White Pine, Red Pine, Scotch Pine, Austrian Pine, White Spruce, Norway Spruce and Colorado Blue Spruce. The District also has Autumn Olive, Silky Dogwood and Honeysuckle shrubs available.

If you are interested, just call the District office at 761-6721 or stop by at 6101 Jackson Rd., Ann Arbor, to pick up an order form. Orders will be accepted until April 16.



You need both. Allstate home-owners insurance and mortgage protection life insurance.

Allstate's homeowners insurance will help to rebuild your house if an insured disaster strikes.

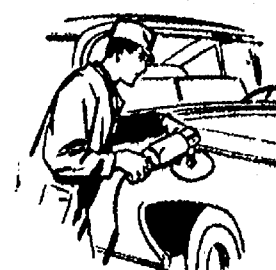
But, what if something happens to you? Who will pay off the mortgage? That's why you also need Allstate Life's mortgage protection life insurance. It helps pay off the mortgage if you die.

So your family will have help to live in a debt-free home. You need both kinds of insurance.

**Allstate**  
You're in good hands.  
Allstate Insurance Company,  
Allstate Life Insurance Company,  
Northbrook, Ill.  
See or phone

**JANET COOLEY**  
14000 McKinley Rd.  
Chelsea  
Ph. 475-9095

## ROBERTS PAINT & BODY



"We do our best to satisfy"

20416 Old US-12 West  
Chelsea, Mich.

Open 8 a.m.-5 p.m. Daily

Ph. 475-1149

## HAPPY ANNIVERSARY - APRIL 1st, 1981

Mr. and Mrs. Leonard — Thank you for 34 years of endless service through The Chelsea Standard. A beautiful job well done.

## ST. MARY'S PARISH FAMILY

## KITCHEN REMODELING

- ★ We at Dutch Country are kitchen remodeling specialists.
- ★ Expert installation available.
- ★ Free design layout service.

- ★ Featuring: HAND CRAFTED AMISH CABINETS.
- ★ Distinctive "GOLDEN OAK CABINETS" By Continental.
- ★ Jenn-Air Appliances ★ Delta Faucets ★ Elkay & Kohler Sinks.

VISIT OUR SHOWROOM

## DUTCH COUNTRY KITCHENS

146 E. Main 428-7292 Manchester

**FOR PROFIT**

**FEED**

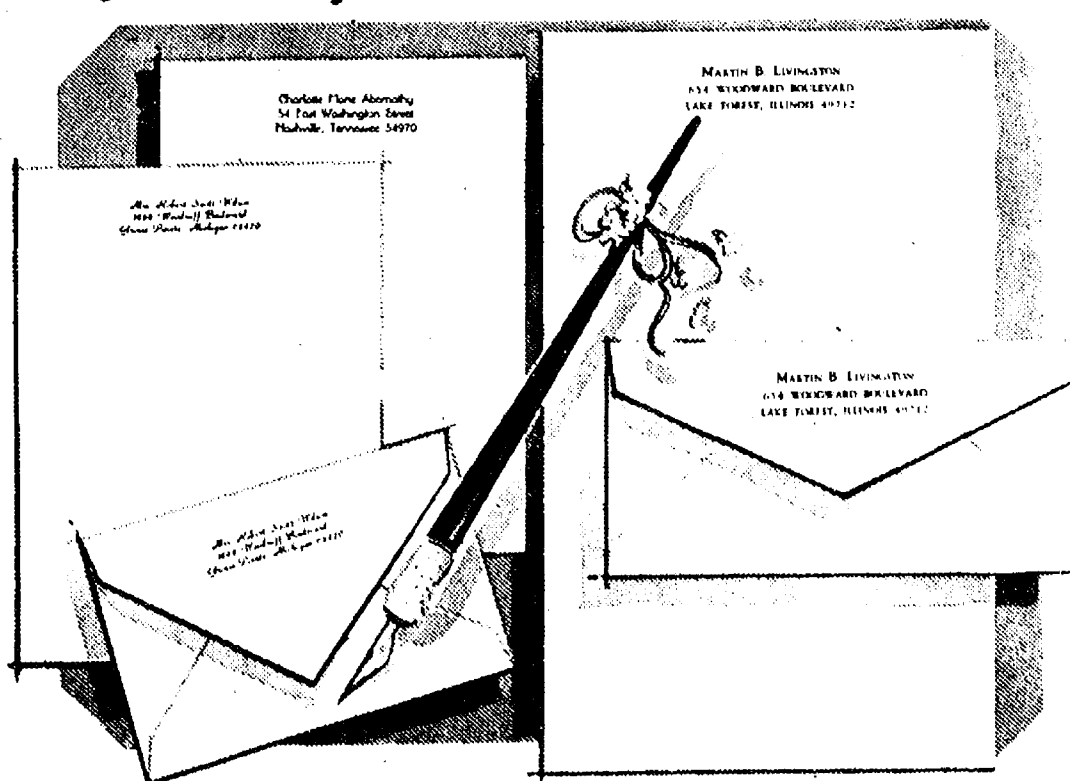
See us for feed needs!

**Feed Formulas Tested, Proved To Get Results**

Extra proteins, vitamins and minerals in proper balance, scientifically blended, make our feeds real profit producers for you.

**Farmers' Supply Co.**  
Phone 475-1777

## The Chelsea Standard



April Sale ... Only **\$8.95** regularly \$16.00  
**Rytex Charter Club Vellum Stationery**

Always correct, this superior letterpaper assures good taste for all your writing needs. Offered in Princess or Monarch sheet sizes with paper color in choice of white, pale blue or soft grey. Choice of three imprint styles as shown (HL, AO, BC) printed in navy blue, deep grey or cherry red. Beautifully gift boxed. 100 Princess sheets and 100 envelopes or 80 Monarch sheets and 80 envelopes.

**Special Bonus:**  
50 extra, unprinted sheets for use as second pages ... only \$3 with order.

**THE CHELSEA STANDARD**  
300 N. MAIN ST., CHELSEA, MICH. 48118  
CHARTER CLUB VELLUM: \_\_\_\_\_ boxes at \$8.95 a box  
INCLUDE BONUS: ☐ (check) 50 extra plain sheets at \$3.00

Imprint Name: \_\_\_\_\_  
Street: \_\_\_\_\_  
City: \_\_\_\_\_  
State, Zip: \_\_\_\_\_  
Check choice of: paper size & color, imprint style and ink color.  
PRINCESS SIZE: ☐ White (7000) ☐ Blue (7050) ☐ Grey (7060)  
MONARCH SIZE: ☐ White (7100) ☐ Blue (7150) ☐ Grey (7160)  
Imprint Style: ☐ HL ☐ AO ☐ BC Ink Color: ☐ Blue ☐ Grey ☐ Red  
ORDERED BY: \_\_\_\_\_  
Address: \_\_\_\_\_ Apt. \_\_\_\_\_  
City, State, Zip: \_\_\_\_\_  
Account No. \_\_\_\_\_ Phone: \_\_\_\_\_  
☐ Charge ☐ Payment enclosed. Serv. no. C.O.D.  
Please add Michigan Sales Tax

## HOME - AUTO - BUSINESS - LIFE

## SPRINGER AGENCY, INC.

(formerly the Mayer Agency)

Your Local Independent Insurance Agency providing dependable protection and prompt claim payment through 10 of the nation's leading insurance companies.



115 Park St., Chelsea, Mich.  
475-8689

Sheridan W. Springer  
Ruth Devine

Elaine Yocum

Donald S. Peck  
Marilyn Holt



# + AREA DEATHS +

**Albert Rossbach**  
Former Chelsea Resident Dies at Muskegon Hospital  
Albert V. Rossbach, 1239 Terrace St., Muskegon, formerly of Chelsea, died Thursday, March 26 at Mercy Hospital, Muskegon. He was 76.

He was born Sept. 10, 1905 in Lennox, Kan., the son of David and Rose Crowley Rossbach. He was married to Dorothy Sanford June 19, 1941. She survives.

Mr. Rossbach had worked for Federal Screw Works in Chelsea and King-Seely and Hoover Ball in Ann Arbor. He moved to Muskegon in 1960 and was employed as an inspector at the Lake Foundry, retiring in 1970.

He had been an active fan of baseball, having played for the 31 League in Nebraska and Iowa. He also played on company teams where he was employed.

Survivors besides his widow, Dorothy, include one brother, Gene Rossbach of Stateville, N. C. and recently of Chelsea; one sister, Mrs. Louise Altman of Ann Arbor; and several nieces and nephews.

A brother, Wayne, preceded him in death in 1975.

Funeral services were held Monday, March 30 at 11 a.m. at St. Mary's Catholic church with the Rev. Fr. Philip Dupuis officiating. Burial followed in Mt. Olivet Cemetery.

The rosary was recited Sunday evening at 6:30 p.m. at the Staffan Funeral Home.

## SCHOOL LUNCH MENU

Week of April 1-14

Wednesday, April 1—Icy lemonade, hot waffles with syrup, sausage patties, chilled fruit cocktail, milk.

Thursday, April 2—Turkey with gravy, dressing, fresh pear, bread and butter, lazy daisy oatmeal cake, milk.

Friday, April 3—Tomato soup with crackers, grilled cheese sandwich, dill pickles, molded fruit salad, milk.

Monday, April 6, through Friday, April 10—No lunch. Schools closed for spring break.

Monday, April 13—Macaroni and cheese, chicken salad sandwich half, diced carrots, tossed salad with dressing, pineapple tidbits, milk.

Tuesday, April 14—Taco with sauce, lettuce, tomato and cheese, tomato juice, chilled peach, milk.

**Gertrude Baker**  
Dies Suddenly Friday At Home on Heim Rd.  
Gertrude M. Baker, 18951 Heim Rd., Chelsea, died suddenly Friday, March 27. She was 69.

She was born Dec. 24, 1911 at Trilountain, the daughter of Herman and Hannah Huovinen. She married Dr. Burton P. Baker in Detroit in December 1934.

Mrs. Baker was a former member of the Redeemer Presbyterian church of Detroit.

She is survived by her husband; one son, Bruce H. Baker of Juneau, Alaska; two granddaughters, Laura and Karen Baker; two sisters, Mrs. Eva Puranen and Mrs. Hannah Dolata, both of Detroit; and one brother, Raymond Huovinen of Houghton.

Graveside services were held Monday at Mt. Hope Cemetery, Lansing at 2 p.m.

Memorial contributions may be made in Mrs. Baker's name to the charity of your choice.

Arrangements were made by the Burghardt-Cole Chelsea Funeral Chapel.

## Alfred Weinmann

Had Retired in 1972 From Federal Screw Works

Alfred L. Weinmann died suddenly Sunday, March 29. He was 74.

He was born March 11, 1907 in Lima Center, the son of Theophil and Martha (Hinderer) Weinmann. He was married to Mary Hinchey July 13, 1939. She survives.

Mr. Weinmann was employed at Federal Screw Works for 43 years, retiring in 1972. He was a member of the United Methodist church.

Survivors, besides his widow, Mary, include one son, Jack Weinmann of Manchester; two sisters, Mrs. Bruce (Emily) Peabody of Chelsea and Mrs. Dorothy Hale of Pinckney; and several nieces and nephews.

Cremation has taken place.

A memorial service will be held Wednesday, April 1 at 2 p.m. at the Staffan Funeral Home with the Rev. Marvin H. McCallum officiating.

Memorial contributions may be made to the Michigan Heart Fund.

In 1968, the first federal 8-hour day law was passed by Congress. It applied only to laborers, workmen and mechanics employed by or on behalf of the United States government, according to "Important Events in American Labor History."

# Guided Walks Offered at Waterloo Nature Center

In an attempt to provide additional learning experiences to the general public, the Waterloo Nature Center will be offering the following guided walks, each week-end through April and May. Cost for all walks will be 50¢ per person unless otherwise stated.

For additional information or to make a reservation call persistently 475-8069, Tuesday through Thursday, 9 a.m. to 3 p.m.

## Special Olympic Cagers Win Over Livonia Center

On Friday, March 27, the Chelsea Special Olympians traveled to Livonia Skills Center to compete in a basketball contest against Livonia. Though the game was close throughout, Chelsea emerged victorious, walking away with a 44-38 victory.

Pacing Chelsea was Tracey Harvey with 16 points, followed by Terry Walkow with eight, Dennis Czechowski with six, Terrence Verge with four, Clarence Weiss three and Mike Goebel, Ryan Sweeney and Lori Brown with two points apiece.

Also spending time on the court were Linda Alber, Dawn Stancato, Albert Bedard, Mike Foster and Theresa Murphy. Coaching the teams were Nancy Cooper, Paula Clark and Ann Boote.

The Special Olympics team will travel to Lansing for a night tournament to be held Thursday and Friday, April 2 and 3. Following that basketball contest, a group of long distance runners will take part in three community road runs, April 5 at Greenhills, April 11 at Washtenaw County Parks and Recreation and April 26 at Burns Park. They will be competing in the 6.2-mile race.

## Use of IRS Label, Envelope Lessen Chances of Error

Taxpayers who use the peel-off label and pre-addressed envelope when filing their income tax returns help reduce the cost of processing and lessen their chances of making time-consuming errors, the Internal Revenue Service said.

Errors, especially if they involved incorrect or illegible social security numbers may also lead to refund delays.

The coded envelope aids the IRS in sorting the returns according to type.

The Nature Center may be reached by taking I-94 to the Pierce Rd. Exit (156). Turn north and follow the park signs to the Nature Center.

Since there is limited space available, reservations for workshops should be made early.

## SPRING SCHEDULE

April 4—No program scheduled.

April 5—Bird Walk—This is a guided walk to varying habitats where the common birds of Michigan are seen. 9:30 a.m.

April 11—Bird House Building Workshop—We will begin with a field trip to look for birds. Binoculars will be provided. Then we will come back to the Nature Center where instructions and help will be given for building your birdhouse. All materials will be provided. 9 a.m. to 12 noon. Cost is \$5. Reservations are required.

April 12—Spring Wildflowers—On this guided walk along the ¼ mile Lowland Woods Trail, you will have the opportunity to view emerging spring wildflowers. (Several walks will be held throughout the season, offering the opportunity to see different species on each walk.) 1:30 and 3:30 p.m.

April 18—Spring Wildflowers, 1:30 and 3:30 p.m.

April 19—Easter Sunday—No programs offered.

April 25—Bird Walk—9:30 a.m.

April 26—Bog Walk—A one and a half mile walk to a floating bog to see insect-eating plants and orchids in season. 1:30 and 3:30 p.m.

May 2—Reptiles and Amphibians—This program will be held in the Auditorium and will include a discussion of the differences between reptiles and amphibians. Common Michigan species will be available to see and touch. 1:30 p.m.

May 3—Bog Walk 1:30 and 3:30 p.m.

May 9—Spring Wildflowers—1:30 p.m.

May 10—Mother's Day—No programs offered.

May 16—Edible Wild Plants Workshop—Did you know that many wild plants of Michigan have nutritional and medicinal value? This workshop will instruct you on the various edible plants in the area. We will begin with a walk and end with an opportunity to taste some of the plants. 1:30 to 4:30 p.m. Cost is \$4. Reservations required.

May 17—Bog Walk—1:30 and 3:30 p.m.

May 23—Bird Walk—9:30 a.m.

May 24—Bog Walk, 1:30 and 3:30 p.m.

May 30—Discovering the Forest Floor—On this guided walk you will learn about the kinds of plants and animals that live on the forest floor. We will identify mushrooms, mosses and lichens, and we will peek under stones and logs to see the kinds of animals that live there. 1:30 p.m.

May 31—Bog Walk—On this Bog Walk we will travel to a nearby bog and actually walk on the surface of the bog. You will need to wear boots or tennis shoes that you don't mind getting wet. This walk is not for the faint-hearted but I'm sure will prove a delight for all adventurers. 1:30 only.

Cost for all walks will be 50¢ per person unless otherwise stated.

In 1978, about 60 percent of the black and Hispanic families maintained by women with children were living below the poverty level compared with only 34 percent of white families, according to "Perspectives on Working Women: A Databook," a publication of the U. S. Department of Labor.

But, what if someone suddenly collapses? A life-saving technique called cardiopulmonary resuscitation, or CPR, can help save that person's life. CPR is a combination of mouth-to-mouth resuscitation and closed chest heart massage to maintain the patient's breathing and circulation.



# Real Estate

By PAUL FRISINGER

REALTOR

## CHECKLIST FOR MOVING

Families who attend to a sensible schedule prior to a household move can make home relocation much less traumatic. Here's a checklist:

Supply post office with forwarding address card . . . Notify charge account, credit card companies . . . Transfer bank funds; arrange for check-cashing in new city . . . Notify insurance companies for coverage in new location . . . Advise gas, electric, telephone companies of last day in old home . . . Cut off deliveries of milk, newspapers, etc. . . Empty freezer and plan for use of stored foods . . . Defrost refrigerator-freezer; place charcoal to dispell odors . . .

have appliances serviced for moving . . . Make firm arrangements with moving company on insurance coverage in transit, packing and unpacking labor, arrival day, method and time of expected payment . . . Carry, don't ship, jewelry and other valuable and vital documents . . . Before departing, double check all closets, drawers and shelves . . . Leave keys with real estate agent.

If there is anything we can do to help you in the field of real estate, please phone or drop in at FRISINGER REALTY CO., 935 S. Main St., Chelsea. Phone: 475-8681; evenings 475-2621. We're here to help!

# Jonsereds

CHAIN SAWS

Now Available at

# CHELSEA HARDWARE

SALES and SERVICE

110 S. Main St., Chelsea

Ph. 475-1121

# Clearance SALE

CLOSE - OUTS - SCRATCH & DENT - USED

While They Last!

<b>GARBAGE DISPOSALS</b> <b>from \$79<sup>95</sup></b> GE and Maytag	<b>USED GE REFRIGERATOR</b> 17 cu. ft. White Very clean. <b>\$250<sup>00</sup></b>	<b>MAYTAG 1981 WASHER</b> Large tub. Reg., perm. press, delicate cycles. <b>Only \$418<sup>88</sup></b>	<b>GE BUILT-IN DISHWASHER</b> SAVE \$50.00 <b>Only \$349</b>
<b>USED HUMIDIFIER</b> Only <b>\$25</b>	<b>REPOSSESSED AMANA REFRIGERATOR</b> 20 cu. ft. Bottom freezer. Deluxe. New \$749.95 <b>Only \$599<sup>95</sup></b>	<b>Sanyo Microwave Oven</b> "Maxi - Chef" Glass tray. 10-min. timer. <b>Only \$229<sup>95</sup></b>	<b>Used Frigidaire Portable Washer &amp; Dryer Combination</b> 220-volt. <b>Only \$250<sup>00</sup></b>
<b>GE VENT HOODS</b> Many in stock. 30" width <b>from \$79<sup>95</sup></b>	<b>AMANA CHEST FREEZER</b> 7 cu. ft. <b>Only \$275<sup>00</sup></b> Slight cabinet damage.	<b>USED GE ELECTRIC RANGE</b> 30" wide. White. <b>\$199<sup>00</sup></b>	<b>Hoover Canister VACUUM</b> With attachments. <b>Only \$49<sup>95</sup></b>
<b>MAGNAVOX ODYSSEY 2 TAPES</b> <b>from \$17<sup>50</sup></b>	<b>MAYTAG 1980 ELECTRIC DRYERS</b> Time setting with perm. press. <b>Only \$289<sup>00</sup></b>	<b>AMANA 30" Corning Smoothtop ELECTRIC RANGE</b> Deluxe. Self-cleaning oven. <b>Only \$699<sup>95</sup></b>	<b>KELVINATOR REFRIGERATOR</b> 1980 pricing -SAVE! 15 cu. ft. chest. <b>Only \$389<sup>95</sup></b>
<b>GE MICROWAVE</b> Large capacity. Touch control. Only <b>\$399<sup>95</sup></b>	<b>G.E. ELECTRIC 30" HI-LO RANGE</b> Deluxe <b>Save \$100<sup>00</sup></b>	<b>USED MAYTAG GAS DRYER</b> Time setting. <b>Only \$125<sup>00</sup></b>	<b>MAGNAVOX 12" B&amp;W TV</b> <b>Only \$99<sup>95</sup></b>
<b>Hoover Upright Cleaner</b> Top fill bag. <b>\$99<sup>95</sup></b>	<b>USED Maytag Washer &amp; Dryer</b> Standard size. <b>\$250</b> for the pair	<b>Sanyo Compact REFRIGERATOR</b> 1.5 cu. ft. <b>Only \$159<sup>95</sup></b>	<b>Maytag 'Jetclean' DISHWASHER</b> <b>\$25</b> FACTORY REBATE (Until 4-30-81)

ALL ITEMS LIMITED TO STOCK

# HEYDLAUFF'S

113 N. Main St., Chelsea

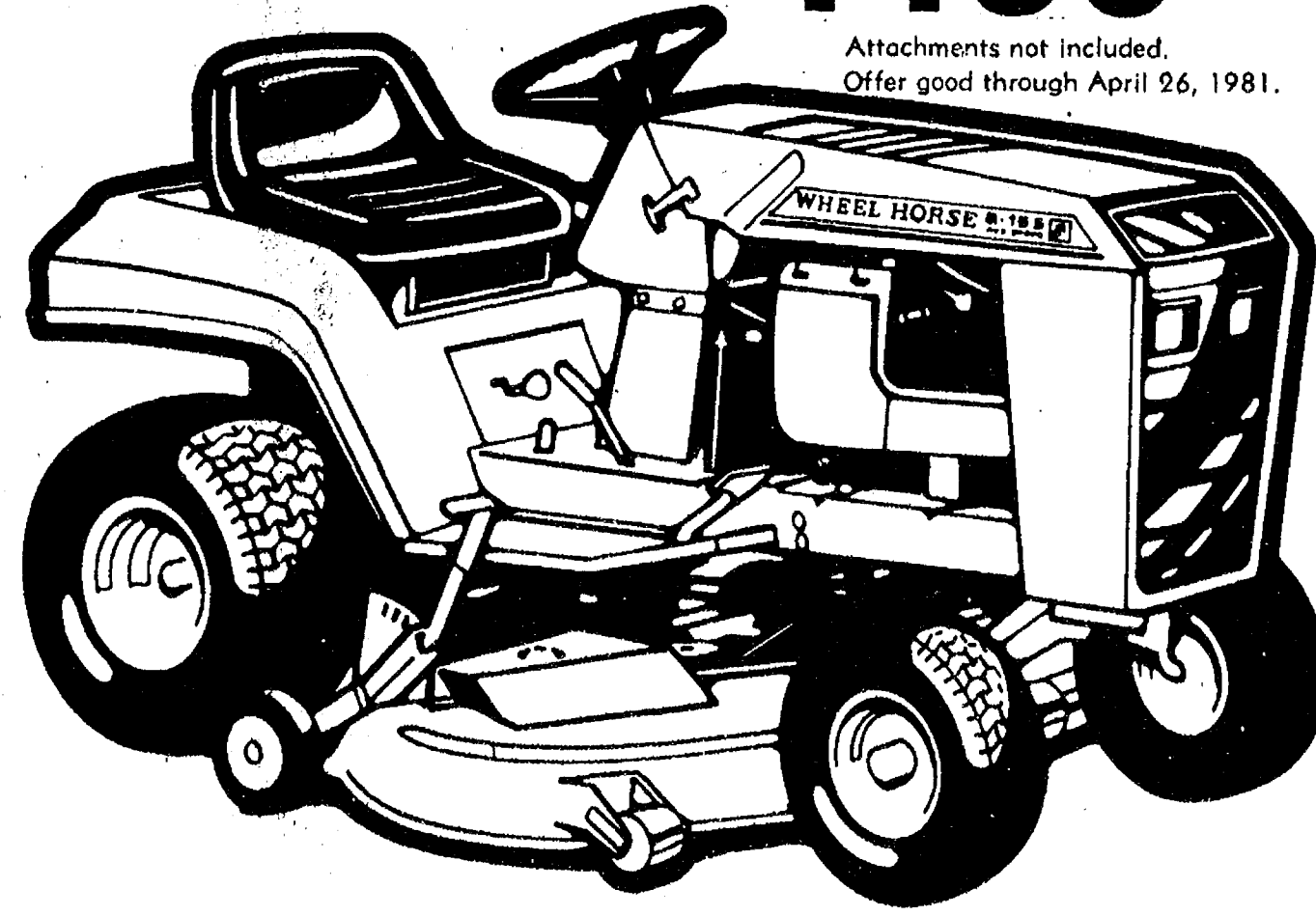
Phone 475-1221

# A SOLID SILVER DEAL

Trade in your grass-cutting unit on selected new Wheel Horse lawn and garden tractors and save \$125. Plus get a free one-ounce certified Engelhard silver ingot in the bargain.

Model B-165 \$1480<sup>00</sup>

Attachments not included. Offer good through April 26, 1981.



Redeem this coupon for additional savings.

GET A TILLER FOR HALF PRICE

when you buy a new Wheel Horse, plus a free ounce of silver for your trade-in.

worth \$495



110 N. Main St., Chelsea

Ph. 475-7472





Supplement to The Chelsea Standard and Ann Arbor News

# CHELSEA PHARMACY Inc.

Prompt,  
Courteous  
Service

101 N. MAIN ST.  
CHELSEA, MICHIGAN  
Phone 475-9103

Store Hours  
Daily  
8 a.m. to 9 p.m.  
Sunday  
9 to 1 p.m.

**BIG SPRING DISCOUNT**

## SAVINGS DAYS

Clip and Save!

WPMD  
BUY OF THE MONTH



WHY PAY MORE COUPON

Reg. 40¢ Value

**CADBURY CREME  
EASTER EGGS**

**3 For 83¢**

Limit (3) Adults Only-Expires in 10 Days

WPMD  
INFLATION BUSTER

WHY PAY MORE COUPON

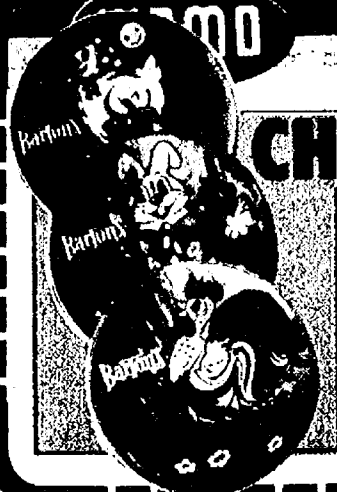
Reg. 29¢ Value-Barton's

**CHOCOLATE BUNNY**

**SOLID  
FOILED 4 For 83¢**

NO. 05429

Limit (8) Adults Only-Expires in 10 Days



WHY PAY MORE COUPON

Reg. 49¢ Value-Barton's

**CHOCOLATE MEDALLIONS**

**FOILED  
PKG. 3 For 99¢**

NO. 05755

Limit (6) Adults Only-Expires in 10 Days

WPMD

WHY PAY MORE

Reg. \$3.00 Value

**EASTER  
SQUEAKER PEEPERS**

**1 59**

NO. 8889

Limit (2) Adults Only-Expires in 10 Days



WPMD

WHY PAY MORE

Reg. \$1.59 Value

**PAAS EASTER**



**EGG  
COLOR  
KIT 79¢**

NO. 11660

Limit (2) Adults Only-Expires in 10 Days

WPMD

WHY PAY MORE

Reg. \$2.59-Paas

**SESAME STREET**



**COLOR  
KIT 1 49**

NO. 11415

Limit (2) Adults Only-Expires in 10 Days

WPMD

WHY PAY MORE

**54 Piece  
DISNEY  
MINI-PUZZLE**

**69¢**

Limit (2) Adults Only-Expires in 10 Days



WPMD

WHY PAY MORE

**Jumbo Roll  
DELTA  
PAPER TOWELS**



**2 For 99¢**

Limit (2) Adults Only-Expires in 10 Days

WPMD

WHY PAY MORE

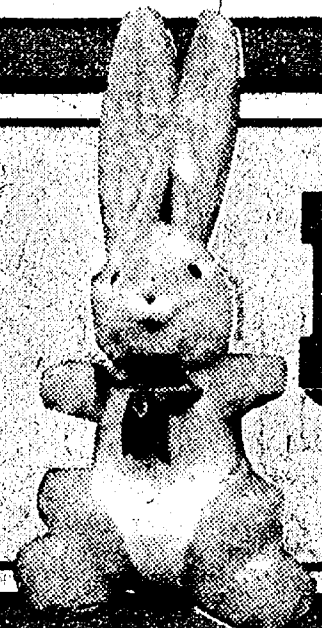
**Gallon Jug  
PUREX  
LIQUID BLEACH**



**72¢**

Limit (2) Adults Only-Expires in 10 Days





You May Be A Lucky Winner!

Reg.\$29.95 Value

**FREE 41 Inch PLUSH STANDING BUNNY**

No Purchase Necessary

**JUST FILL OUT ENTRY BLANK TO RIGHT AND DROP IN BOX at STORE**

Date of Drawing to Be Announced In Store

ENTRY BLANK

**FREE 41 Inch PLUSH STANDING BUNNY**

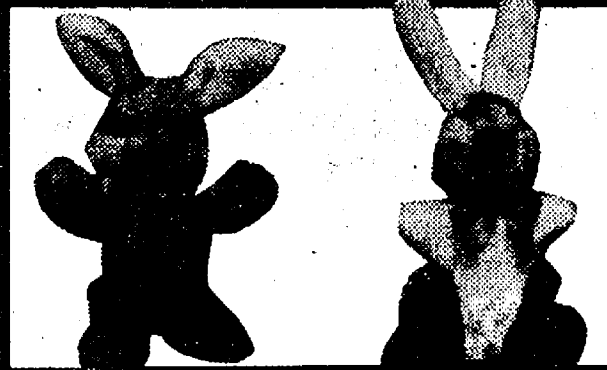
Fill Out and Drop In Box at Store

Name \_\_\_\_\_

Address \_\_\_\_\_

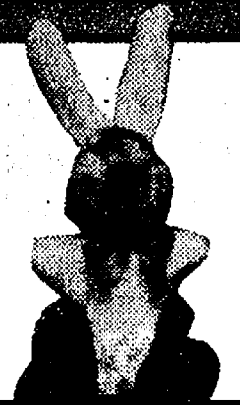
Phone \_\_\_\_\_ City \_\_\_\_\_

**ALSO ON SALE FOR.... \$19.95 NO. 8856**



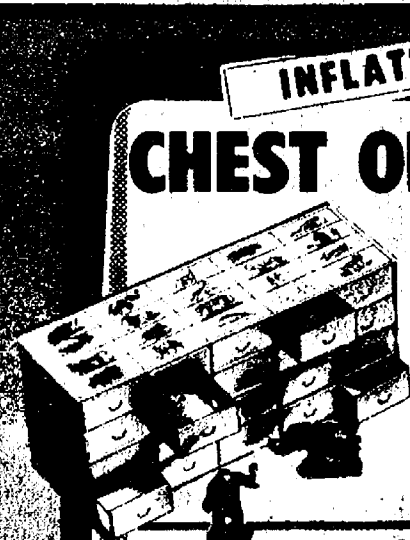
5 1/2" Plush  
**STANDING BUNNY**

**88¢**



10" Plush  
**BEGGAR BUNNY**

**1.88**



**CHEST OF ANIMALS**

Imagine 20 different animals each in its own slide-out drawer.

**3.99**  
NO. 93976

Assorted  
**DISNEY PUZZLE**

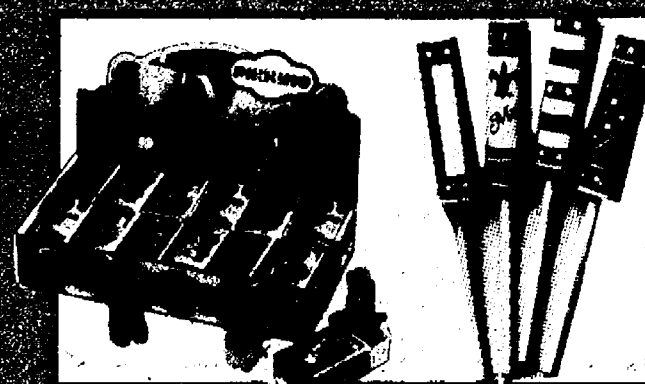
Assorted Disney characters for age groups 2 to 6. Colorful, easy to put together. NO. 501

Reg.\$1.79 to \$1.99

**99¢** Ea.



**BUY OF THE MONTH**



**HATCHBOX DOLLS**

Reg. 2.50 Value  
**CHERRY YO-YO**

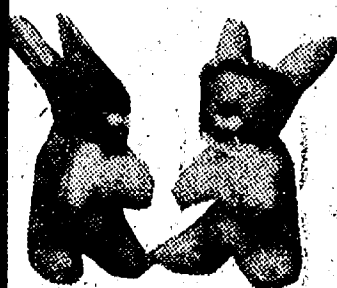
**2.100**

**2.25¢**

Reg.\$2.79-8 1/2" Boy or Girl

**PLUSH BUNNY**

High quality stuffed plush colorful Bunnies at a special low price.



**1.77**  
NO. 486-487



**12 KEY XYLOPHONE**

Made of strong impact heavy gauge plastic with 12 colored metal reeds. Furnished with song book and 2 mallets.

**2.99**  
NO. J7242



INFLATION BUSTER

**TARGET BALL PISTOL**

Shoots 6 safe Ping Pong balls. Fast pump action, safe, harmless. Buy several and save.

**1.49**  
NO. 2/42



INFLATION BUSTER

**49¢**

**29¢**

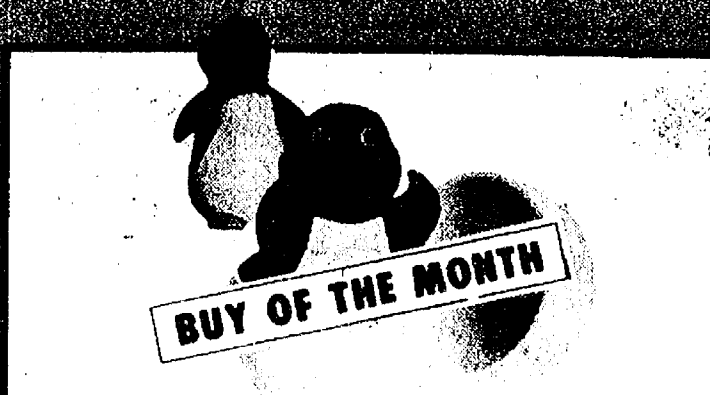


**MUFFIN'S LOVES HER KITTEN**

Muffins and her kittens are soft and cuddly. Just right for your lovable playtime pets.

NO. 12022-00

**3.66**



**BUY OF THE MONTH**

**BABY SURPRISE MOTHER PENGUIN**

Soft and cuddly. Perfect for your baby's playtime.

NO. 12005-00

**3.99**





**SUPER SPECIAL**

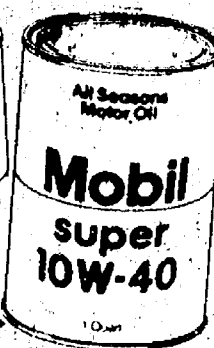
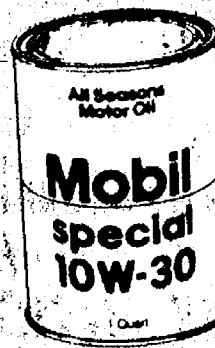
# MOBIL 1 MOTOR OIL

- Save gas
- Save oil changes
- Start at 35° below Zero in well-tuned engines

**QUART CAN**

**319**

**INFLATION BUSTER**

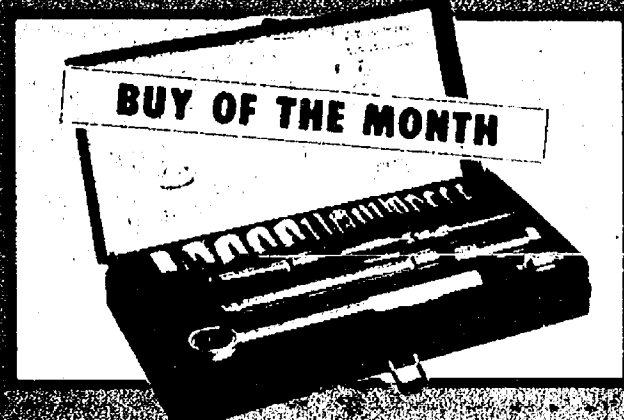


# MOBIL OIL 10-W-30

**QUART CAN**

**83¢**

**10-W-40 Quart 93¢**



**BUY OF THE MONTH**

## 21-Pc. SOCKET SET

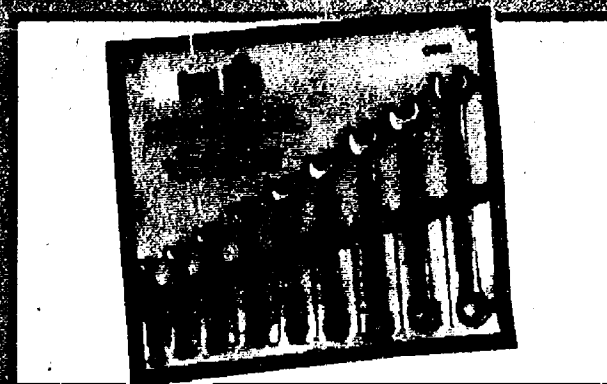
**799**

## 32oz. Size GAS-UP M.P.G. ADDITIVE

Increase your miles per gallon up to 30%, also increase octane of your gas.



**159**



## 9 Pc. WRENCH SET

Fine quality 9 piece handman's wrench set. Combination box and open end wrench are 1/2" to 1 1/2". Drop forged chrome plated alloy steel. Will last for years.

**799**

## Gallon Jug WINDSHIELD WASHER SOLVENT



**SPECIAL PRICE**

**89¢**

## Gallon Jug PEAK ANTI-FREEZE & COOLANT



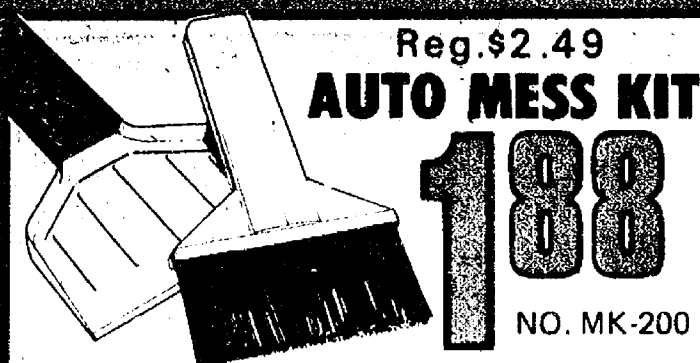
**399**

**ENERGY SAVER**

## Long Life-Eltron LIGHT BULBS 60-75-100 WATT

Money saving, long life, bright, fine quality, U.S. made Light Bulbs. Average life up to 3500 hours. Inflation buster special. Stock-up during our big Spring Sale.

**4 BULBS 89¢**



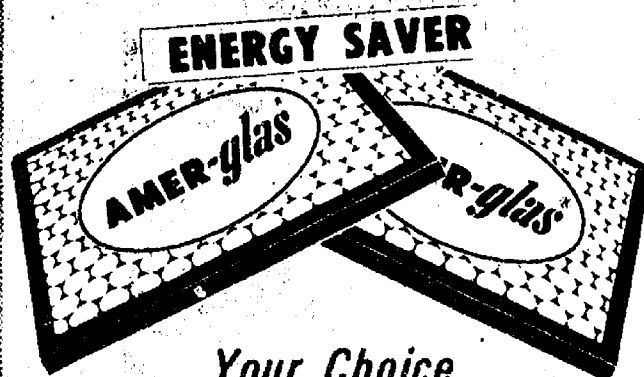
Reg. \$2.49  
**AUTO MESS KIT**

**188**  
NO. MK-200

## Assorted '72" x 90" BLANKETS

Large size 72" x 90" with fine quality, famous Canyon Blankets. 50% off the old 80% off the new. 100% nylon, bright colors and light, bright dye.

**499**  
NO. 018

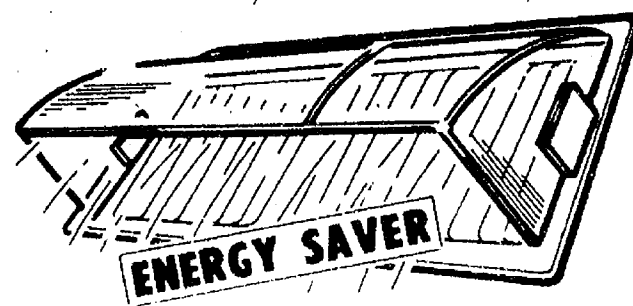


**ENERGY SAVER**

## Your Choice FURNACE FILTERS

20" x 20" x 1"-20" x 25" x 1"  
16" x 20" x 1"-16" x 25" x 1"

**2 For 99¢**



## HEAT & AIR DEFLECTOR

Necessary For Air Conditioning From Floor Registers & Jets Cool Air Up  
• Clear Plastic  
• Held by Magnets

**77¢**



ENTER

# THE "TRIPLE CROWN" SWEEPSTAKES

SEE IN STORE DISPLAY FOR DETAILS



HEALTH

SAVING

Clip and

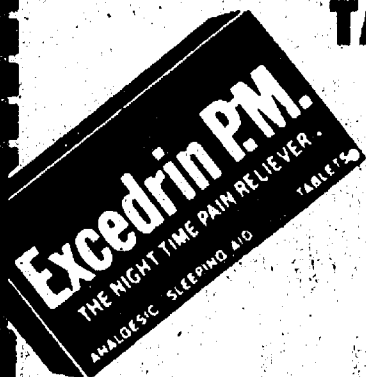
WPMD

WHY PAY MORE

INFLATION BUSTER

80 Count

**EXCEDRIN P.M. TABLETS**



**299**

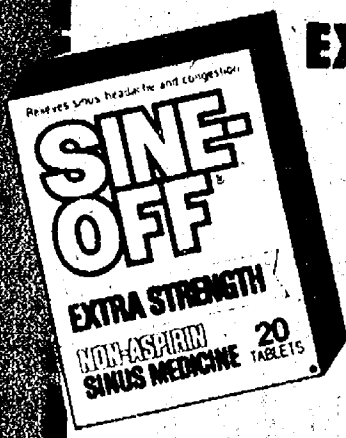
Limit (2) Adults Only-Expires in 10 Days

WPMD

WHY PAY MORE

Reg. \$3.29 20 Count

**SINE-OFF EXTRA STRENGTH NON-ASPIRIN TABLETS**



**199**

Limit (2) Adults Only-Expires in 10 Days

WPMD

WHY PAY MORE

18 Count

**CHLORASEPTIC LOZENGES**



**109**

\*Menthol  
\*Cherry  
\*Grape

Limit (2) Adults Only-Expires in 10 Days

WPMD

WHY PAY MORE

20 Count

**CO-TYLENOL COLD FORMULA CAPSULES**



**209**

Limit (2) Adults Only-Expires in 10 Days

WPMD

WHY PAY MORE

60 Count

**BUFFERIN TABLETS**



**179**

Limit (2) Adults Only-Expires in 10 Days

WPMD

WHY PAY MORE

Cherry or Menthol  
**CHLORASEPTIC MOUTH WASH**

COMPARE & SAVE



6oz Size

**179**

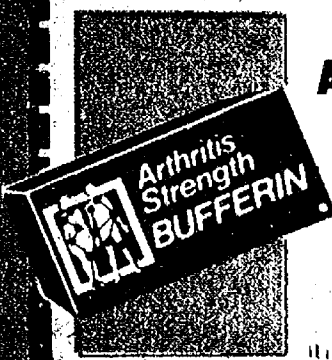
Limit (2) Adults Only-Expires in 10 Days

WPMD

WHY PAY MORE

40 Count

**BUFFERIN ARTHRITIS TABLETS**



**169**

Limit (2) Adults Only-Expires in 10 Days

WPMD

WHY PAY MORE

Plain or Sheer

**CURAD BANDAGES**

COMPARE & SAVE



30 Count Assorted

**99¢**

Limit (2) Adults Only-Expires in 10 Days

WPMD

WHY PAY MORE

Reg. \$3.71-15oz.

**VASELINE INTENSIVE CARE LOTION**



\*Reg. \*Herbal \*Extra Strength

**229**

Limit (2) Adults Only-Expires in 10 Days

WPMD

WHY PAY MORE

**CURITY-WET-PROOF ADHESIVE TAPE**



1" x 5yds.

**99¢**

Limit (2) Adults Only-Expires in 10 Days

WPMD

WHY PAY MORE

Reg. \$1.76-170 Ct.

**Q-TIPS COTTON SWABS**



**99¢**

Limit (2) Adults Only-Expires in 10 Days

SPECIAL PURCHASE

WHY PAY MORE

1.5oz. Size

**ULTRA-BAN ROLL-ON ANTI-PERSPIRANT**



Reg. or Unscented

**144**

Limit (2) Adults Only-Expires in 10 Days



# BEAUTY AIDS

# INGS DAYS

Firestarter Coupons!

WPMO INFLATION BUSTER

WHY PAY MORE

Reg. \$1.69 Value

**VIDAL SASOON  
SKIN CARE  
KIT**



**129**

Limit (2) Adults Only-Expires in 10 Days

WPMO

WHY PAY MORE

Reg. \$3.50-8oz. Size

**VIDAL SASOON  
SHAMPOO or  
FINISHING RINSE**



Your Choice

**199**

Limit (2) Adults Only-Expires in 10 Days

WPMO WHY PAY MORE

Reg. \$2.75-2oz. Size

**VIDAL SASOON  
PROTEIN HAIR  
RE-MOISTURIZING CREME**

**159**

Limit (2) Adults Only-Expires in 10 Days

WPMO

WHY

AS SEEN ON T.V.

Reg. \$1.80-1oz. Size

**VIDAL SASOON  
PROTEIN PAC**



**99**

Limit (2) Adults Only-Expires in 10 Days



**PHARMACIST**

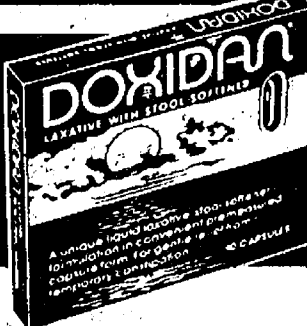
**SUGGESTIONS  
OF THE  
MONTH**



Reg. \$2.49-1/2oz.

**GYNECORT  
FEMININE MEDICINE**

**\$149**



Reg. \$1.79-10 Count

**DOXIDAN  
LAXATIVE CAPSULES**

**\$129**

WPMO WHY PAY MORE

4.5oz. Twin Pak

**SUMMERS EVE  
DISPOSABLE DOUCHE**

\*Reg.  
\*Herbal  
\*Vinegar  
& Water

**99**

Limit (2) Adults Only-Expires in 10 Days

WPMO

WHY PAY MORE

Regular or Extra Hold

**WHITE RAIN  
HAIR SPRAY**



8oz.  
Non-  
Aerosol

**139**

Limit (2) Adults Only-Expires in 10 Days

WPMO WHY PAY MORE

Natural or Nude

**SALLY HANSEN  
HARD AS NAILS**

Reg.  
98¢  
Value

**69**

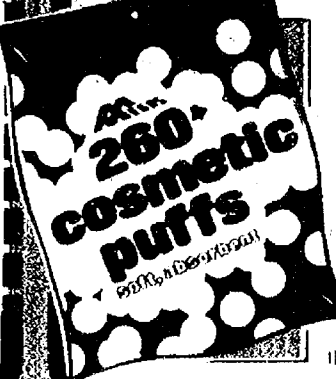
Limit (2) Adults Only-Expires in 10 Days

INFLATION BUSTER

WHY PAY MORE

Megas

**COSMETIC PUFFS**



260  
Count

**49**

Limit (2) Adults Only-Expires in 10 Days

WPMO WHY PAY MORE

10oz. Size

**Johnson's  
BABY  
OIL**

**219**

Limit (2) Adults Only-Expires in 10 Days

WPMO

WHY PAY MORE

Reg. \$1.07-4oz. Size

**CUTEX POLISH  
REMOVER**



\*Reg.  
\*Lemon  
\*Herbal

**59**

Limit (2) Adults Only-Expires in 10 Days

INFLATION BUSTER

**B-D**

**MICRO-FINE DISPOSABLE  
INSULIN SYRINGE**

U-100-1cc



**10 In Pkg. 149**

WPMO

WHY PAY MORE

10oz. Size

**Johnson's  
BABY  
OIL**

**219**

Limit (2) Adults Only-Expires in 10 Days

WPMO

WHY PAY MORE

Reg. \$1.07-4oz. Size

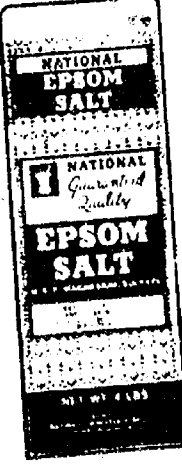
**CUTEX POLISH  
REMOVER**



\*Reg.  
\*Lemon  
\*Herbal

**59**

Limit (2) Adults Only-Expires in 10 Days



**National  
EPSOM  
SALT**

4 LB. CTN.

**99**

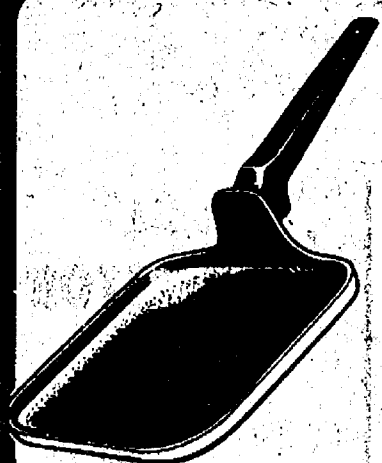
Gallon-Bottle

**DISTILLED  
WATER**



**49**



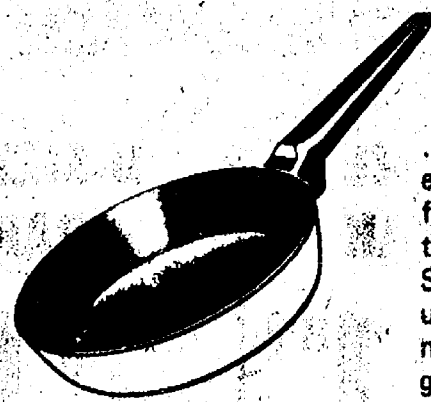


## Silverstone-6 1/2 Inch LITTLE GRIDDLE

6 1/2 Inches square... perfect for one sandwich, a slice of french toast or dollar-size pancakes! Made of 12-gauge aluminum for long life.

**3 99**

NO. 45-006-09

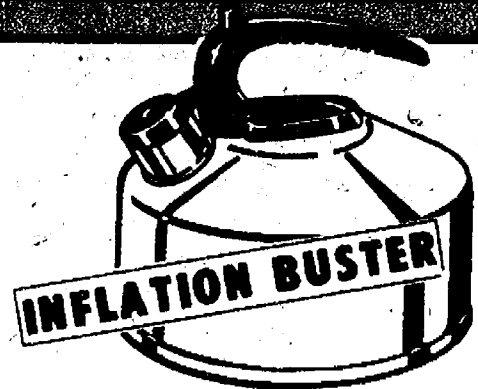


## Silverstone-7 Inch FRYING PAN

...perfect for one egg, a chop or two, a few sausages or some tasty leftovers! SilverStone interiors are ultra smooth and more durable with greatly improved scratch resistance.

**3 99**

NO. 45-197-09



## 2 1/2 Quart Whistling TEA KETTLE

The 2 1/2 Quart Whistling Tea Kettle SilverStone interior is ultra smooth and more durable with greatly improved scratch resistance. NO. 45-004-10

**3 79**

## INFLATION BUSTER

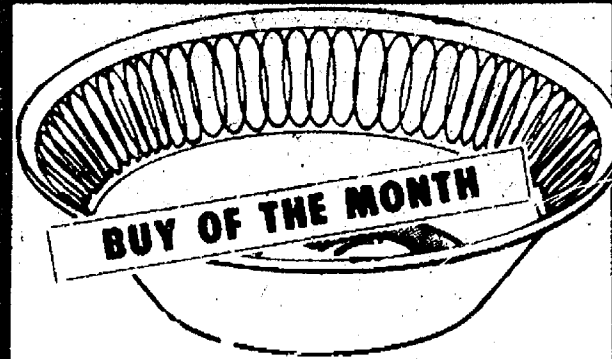


## Silverstone-1 Quart SAUCEPAN

double-lipped, pours either right or left hand. Perfect for sauces, gravies or heating a couple of servings of soup, vegetables, etc.

NO. 45-401-09

**3 99**

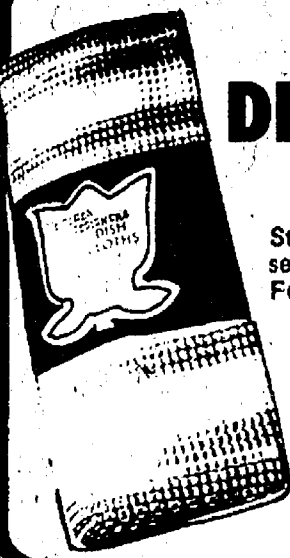


## Ironstone ALL PURPOSE BOWL

Great For Soups, Salads, Etc.

Fine quality ceramic construction. Slip-free finish. Stack of four bowls. NO. 45-004-11

**83¢**



## MESH DISH CLOTHS 5 PAK

Stock up and save money. Buy several at our low sale price. Fully machine washable.

**99¢**

NO. TWT5



## Solid or Striped WASH CLOTHS

Machine washable, finest quality, special value. Colorfast, soft, durable. Stock-up, Save, Save. NO. RS 6753 Striped NO. 784 Solid Colors

**2 For 75¢**

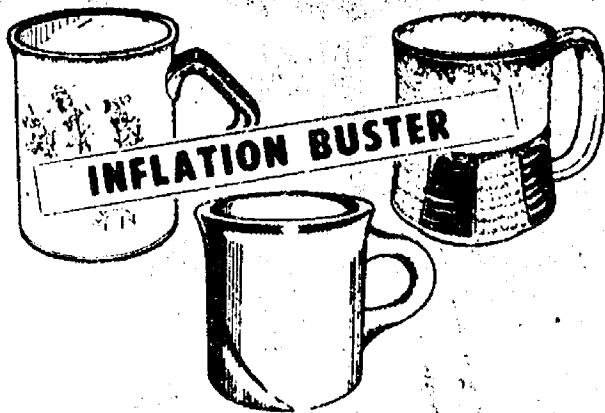


Reg. \$1.19 Value

## VACUUM CLEANER BAGS

Choose from assorted designs and colors. Machine washable. NO. 1501-1502-1508

**59¢**



Floral-9oz. & 12oz. Size

## COFFEE MUGS

Fine quality assorted designs and color Ceramic Coffee Mugs. Choose from 9 oz. to 12 oz. sizes. Stock-up at this fantastic low price.

NO. 1501-1502-1508

**83¢**



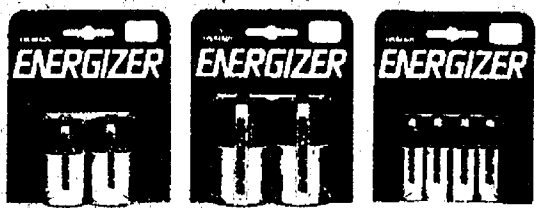
## Softsoap™ Liquid soap

\*BROWN  
\*WHITE  
\*GOLD

**1 19**

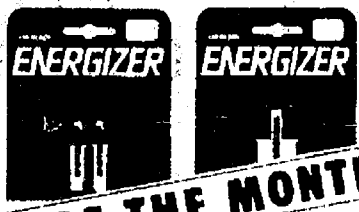
10.5oz. Size





# ENERGIZER<sup>®</sup> BATTERY SALE

by EVEREADY



**C-SIZE  
2 PAK**

Reg. \$2.60 **\$1<sup>89</sup>**

**BUY OF THE MONTH**

**D-SIZE  
2 PAK**

Reg. \$2.60 **\$1<sup>89</sup>**

**AA-SIZE  
4 PAK**

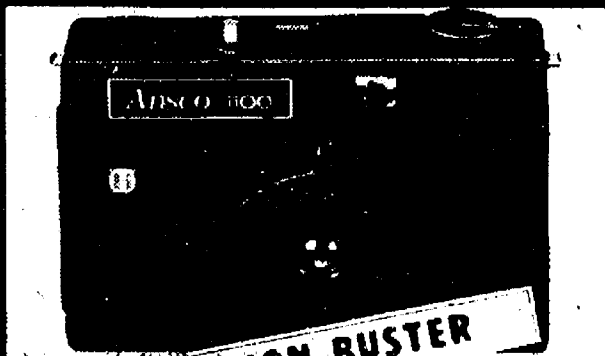
Reg. \$3.80 **\$2<sup>59</sup>**

**AAA-SIZE  
2 PAK**

Reg. \$2.00 **\$1<sup>39</sup>**

**9 VOLT  
TRANSISTOR**

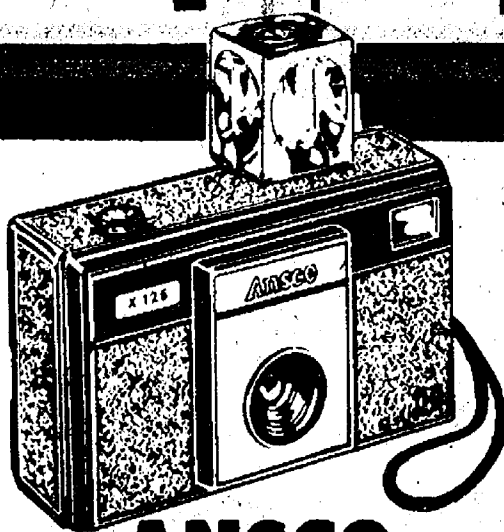
Reg. \$2.60 **\$1<sup>89</sup>**



**INFLATION BUSTER**

**ANSCO 35 MM  
FLIP FLASH CAMERA**

**1749**



**ANSCO  
MAGICUBE CAMERA**

Takes sharp, clean pictures everytime. This fine sharp lens Ansco X126 Magicube camera is easy to operate and economical to use. Special low price during sale.

**699**

NO. X126



**SPECIAL PURCHASE**

**AVON  
AM/FM RADIO**

This fine quality powerful, solid state portable gives you both AM and FM at a price you can afford. Come in and see for yourself. You may be surprised.

**899**

**MEMOREX 90**  
BUY TWO CASSETTES  
GET ONE FREE!



Reg. \$14.37 Value  
**MEMOREX  
CASSETTE TAPES**  
C-90 Minute

**3699**  
PAK

**POLAROID  
SX-70 TIME ZERO  
COLOR FILM**

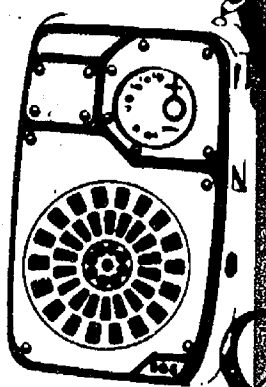
Time-Zero  
Supercolor  
SX-70 Land Film  
Polaroid

**699**

**Solid State  
AVON  
AM RADIO**

Powerful sound, solid state, easy to carry. Fun Radio will give you hours of enjoyment. Compare our low price.

**399**  
NO. 122



**COMPARE & SAVE**



**INFLATION BUSTER**

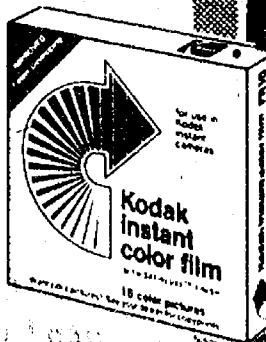
**PICTURE FRAMES**

**Special  
Purchase!**

**169**

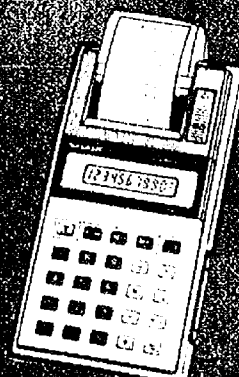
**KODAK PR-10  
INSTANT FILM**

**749**



C-110-24 Exp.  
**KODACOLOR  
FILM**

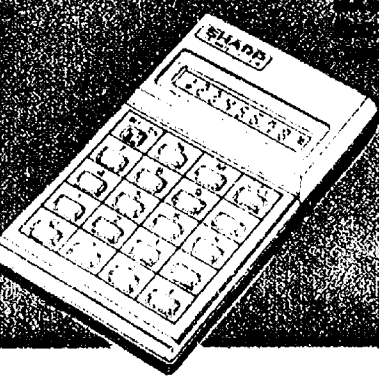
**237**



**HAND HELD 10 DIGIT  
POINT DISPLAY  
CALCULATOR**

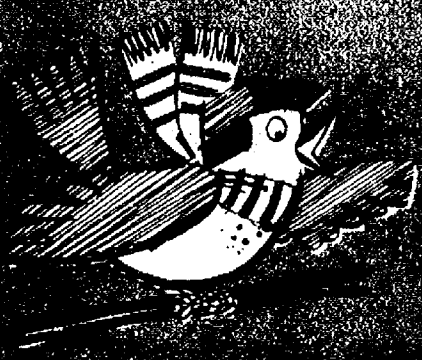
**4900**  
NO. EL-1188

**ELECTRONIC  
CALCULATOR**



**799**  
NO. EL-1188





# BIG SPRING SAVINGS

WPMD

WHY PAY MORE COUPON

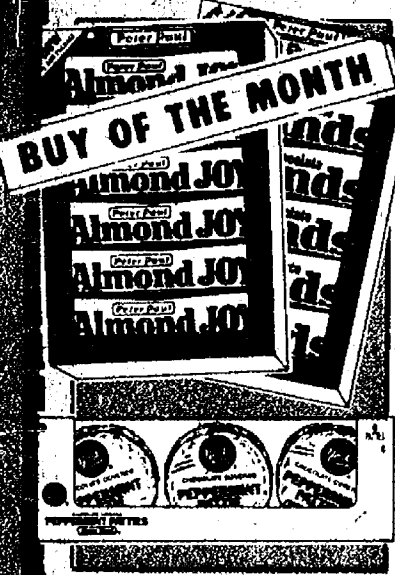
Your Choice

**CANDY BARS**

\*ALMOND JOY\* MOUNDS  
\*YORK MINTS\* POWERHOUSE

**6 IN PKG. 99¢**

Limit (2) Adults Only-Expires in 10 Days



WPMD

WHY PAY MORE COUPON

150 Count Box

**DELTA FACIAL TISSUE**

**2 For 89¢**

Limit (2) Adults Only-Expires in 10 Days



WPMD

WHY PAY MORE COUPON

5oz. Size- Your Choice

**CADBURY CANDY BARS**

\*Milk Chocolate  
\*Caramello  
\*Almond Crisp

**79¢**

Limit (2) Adults Only-Expires in 10 Days



WPMD

WHY PAY MORE COUPON

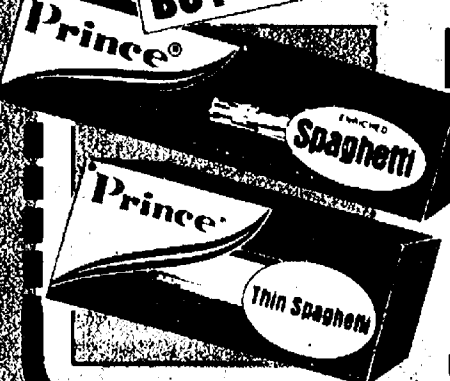
Your Choice-16oz. Pkg.

**PRINCE SPAGHETTI**

THIN or  
REGULAR

**55¢**

Limit (2) Adults Only-Expires in 10 Days



WPMD

WHY PAY MORE

**DELTA TOILET TISSUE**

**4 Roll Pak 77¢**

Limit (2) Adults Only-Expires in 10 Days



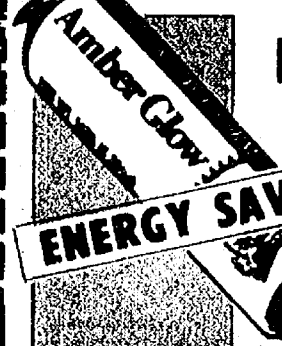
WPMD

WHY PAY MORE

**AMBERGLOW FIREPLACE LOGS**

**79¢**

Limit (2) Adults Only-Expires in 10 Days



WPMD

WHY PAY MORE

Meat or Mushroom

**PRINCE SPAGHETTI SAUCE**

32oz.  
SIZE

**89¢**

Limit (2) Adults Only-Expires in 10 Days



WPMD

WHY PAY MORE

Gillette- Disposable

**CRICKET LIGHTER**

Reg. \$1.49  
**39¢**

Limit (2) Adults Only-Expires in 10 Days



WPMD

WHY PAY MORE

4oz. Plastic Bottle

**COPPERTONE OIL or LOTION**

**\$1.69**

Limit (2) Adults Only-Expires in 10 Days



WHY PAY MORE

100 Count

**GAVISCON TABLETS**

**\$4.29**



## CHELSEA DRUG STORE

101. N. MAIN ST.

Phone 475-9103